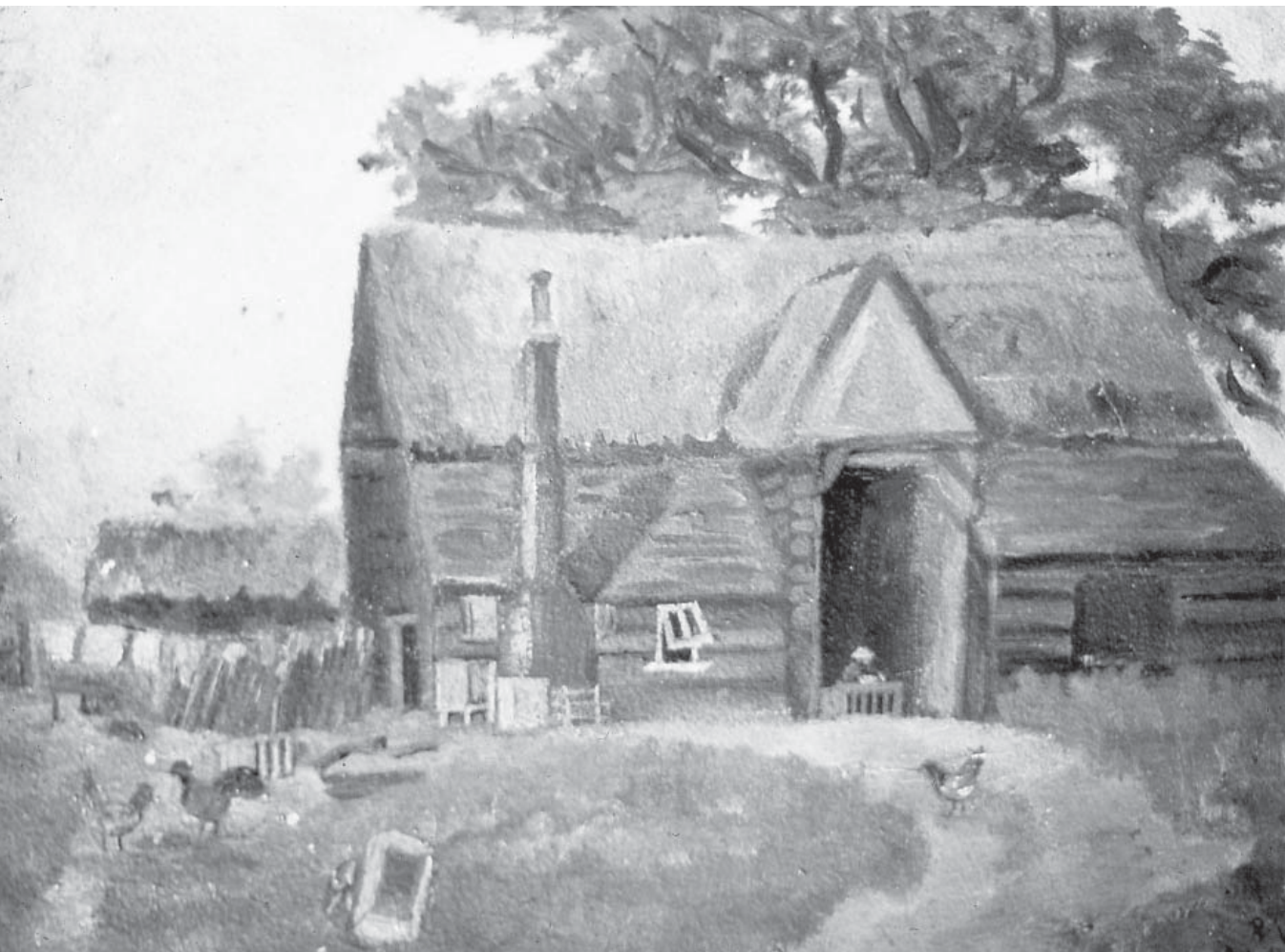


Hatfield Peverel

Review

252 - February 2016



A lovely painting of Knowles Barn: in happier times it stood on the track leading to Sandfords which runs past Rev Derek Clark's house at The Leas Farm, Wickham Bishops Road. Before it was blown down in the winds of 1987 it was painted by Derek's daughter Sarah. It arrives on our February cover thanks to Geoff Austin who in a crisis dug deep in his photographic library and came up with his photograph of it. Thank you to them all.



Hatfield Peverel Review

Hatfield Peverel Parish Council publication.
Opinions expressed are not necessarily those
of the Council.

The editors are Jackie and Ken Earney.
Contributions to 59 Willow Crescent, by
email to keneaney@hotmail.com or by
phoning 01245 381235.

Contents

Village sign/NDP update/73 bus news	3
Allotments/Horticultural Society	4
St Andrew's Junior School visit to Colne	5
Valley Railway	
Parish Council	6
New Year's Day walk/footpaths update	7
Scout Group/Library/Valentine's Day at	8
Hatfield Peverel Lodge	
Party in the Park celebrates/WEA	9
Goodbye to Joyce Fitch	10
Hadfelda WI/Langford & Ulting Art Show	11
Football Club/Bowls	12
Girl Guiding	13
St Andrews/Methodist Church	14/15
Mother's Union	15
Cubs visit Salvation Army/Ride for Helen	16
Flower Club/Walkers/Mighty Oak Trees	17
Childcare/Infant School drawings	
Wine Club/village hall events	18
Telephone numbers/Parish Councillors	19
The birth of our village sign	20

**Copy for the April issue by Friday,
18th March please.**

Local events

Diary Dates

Church dates page 14 onwards

Village hall events page 18, Library dates page 8

February

- 13 Methodist Church coffee morning 10am
- 13 Valentines Day afternoon, see page 8
- 20 Helen Rollason coffee morning
- 24 Hadfelda WI
- 25 Hatfield Peverel Walkers
- 25 Folk Dance Club
- 27 Salvation Army coffee morning 10am

March

- 1 WEA speaker meeting, see page 9
- 2 Flower Club
- 5 St Andrew's coffee morning 10am
- 7 Parish Council meeting, 7.30pm
- 9 Wine Club
- 10 Folk Dance Club
- 11 Horticultural Soc. speaker meeting, page 4
- 12 Methodist Church coffee morning 10am
- 19/20 Langford and Ulting Art Show, page 11
- 19 Helen Rollason coffee morning 10am
- 22 NDP meeting, village hall, see page 3
- 22 WEA AGM, 10am Scout HQ
- 24 Folk Dance Club
- 25 Hatfield Peverel Lodge, see page 8
- 26 Salvation Army coffee morning 10am
- 31 Hatfield Peverel Walkers

April

- 2 Horticultural Society Spring Show

Elections are coming...

Make sure you are registered to vote

**Paying Council Tax does NOT mean you
are on the Electoral Register. If you have
your: National Insurance Number and
Date of Birth it's simple to register and
takes less than 3 minutes**

www.gov.uk/register-to-vote 01376 552525

YOUR VOTE MATTERS
MAKE SURE YOU'RE IN



Reasons to be cheerful...

It is wonderful to see our Millennium village sign back in its place on The Green, refurbished and in its newly painted colours following an argument with a car last year. Thank you to our local craftsman Steve Miller who carried out the refurbishment, and his wife Susan who has revitalised the colours, faded after fifteen years of rain and sun. Normally the daffodils would still be underground but in this year's warmer weather they are a fitting background to the sign.

The sign was produced by Ken Miller, then village blacksmith at Nounsley Corner, whose uncle was also a blacksmith/farrier in Hatfield Peverel. Steve, involved with the construction and erection of the original sign, which Susan painted, now runs the family business.

Those new to the village may be interested to read, on the back cover of this issue, the history of the Millennium sign, commissioned by the 1999 Parish Council.

Neighbourhood Development Plan update

A Policy Writing Team has been put together since the last Steering Group meeting held on the 15th December. This team will implement our Consultant's proposals on the first draft of the policies which have been written by the topic groups following all the consultations, surveys and evidence collected last year, and to agree the layout and format of the draft Plan itself.

The team is made up of three residents (plus Amie a graphic designer) who are making excellent progress with the help of the individual topic groups. Also, a summary sheet of all the additional comments given in the Resident's survey has been created along with an individual analysis sheet for each of the topic groups. All of these are on the NDP Google drive along with a vast amount of information and documentation.

The second meeting with our Consultant, Ann Skippers, took place at the end of January, and a meeting is taking place with the Senior Policy Planner at BDC at the beginning of February. Therefore the strategic working group decided to postpone the January Steering Group meeting until March with a view to reporting to members the outcome of both these meetings and update on the draft policies.

We are on track with our time table, and anticipate being in a position to present to BDC a draft Plan for the Strategic Environmental Assessment screening in the Spring.

Diary Date

Tuesday 22nd March

The NDP Executive Committee will meet at 6.30pm in meeting room 1 at the village hall.

The Steering Group committee meeting will follow immediately after at 7.30pm.

Revisions to ECC supported bus services including route 73

At the local Bus User committee it was announced there will be **revisions of ECC supported services. As from 11th April route 73 will see some improved revision of the time table** bringing the times to a slightly more regular basis, and a later 'last bus' from Maldon. Timetables will be published later.

Information on the new, quarter-hourly service between Witham and Chelmsford, via Hatfield Peverel, and the new Park and Ride service which runs every 30 minutes from Chelmer Valley car park to Broomfield Hospital. This latter service is being run on a trial basis for 12 months but has to prove itself in terms of usage, otherwise it will be withdrawn at the end of the year.

Car parking and travel on this bus is free to National Concessionary Pass holders, otherwise it is £3 per adult - it is good value, taking just under 10 minutes for the journey and no hassle finding a car parking space when you arrive at the hospital. **ECC is keen to encourage increased use of all these services.**

Welcome - and unwelcome - happenings on the allotments

Allotment and growing news - Sean Pettit HPAA Chairman www.hpaa.org.uk

Telephone: 07966 662556; email: chairman@hpaa.org.uk



Although winter is our typically quiet time, a lot has been happening on both allotment sites of late. Some of which to be honest, has not been too welcome, and happily some that is quite exciting for members of the HPAA! Regarding the not so pleasant, a significant number of break-ins have occurred on the new site. Over the last few months the members have had to endure break-ins and vandalism to their sheds and contents. Fortunately, not much was taken as members keep little of value in their sheds especially at this time of year. But the damage to their sheds was dreadful, and considering nothing much was taken, it makes this even more frustrating. In an attempt to minimise access and resolve the issue, we have had to completely fence off the site at considerable cost to the HPAA. I would like to mention that no funding was asked for nor given by the Parish Council.

Happily, our more exciting news is that Travis Perkins donated a shed to us which we are renovating. When finished, it will offer our members an on-site store and meeting place. We will be wood cladding the sides and painting the shed a nice green colour and the yellow frame work will also be toned down to a more subdued black. So all in all it will offer the allotment members on both sites a valuable new facility.

On a growing note I have noticed the first shoots of my rhubarb so I'm looking forward to my first picking, then into the kitchen to make the first of this season's rhubarb crumble, my favourite. Now is also a great time to get planting fruit trees if you haven't already done so. In other news, while the new site is fully let, we do have a couple of vacant plots on the old site so if you would like one of your own, please give Simon Reed a call on 01245 382696 and he will be only too pleased to show you around. Happy growing and a healthy life.

Will there be any daffodils left for Spring?

Horticultural Society

Snowdrops - wonderful in the churchyard again this year - primroses, hellebores, violets and many other plants that should know better, are flowering profusely. By the time the Spring Show is upon us in April what will be left of the bulbs?

Our first evening event, on Friday 11th March, is a speaker meeting entitled 'Better photography' with Ray Lawrence. Ray will show us how to come first at the Horticultural Society's two yearly shows! The meeting starts at 8pm in the village hall, Maldon Road

Spring Show, Saturday 2nd April

Village hall doors open 2pm for the first show of the season which include the winners of the Spring bulb competition.

This is a family show - you don't have to

grow any vegetables or compete with the longest bean: just bake a cake or two (the farmhouse apple and sultana cake, recipe in the year book and schedules could win you a prize of £10), make a pot of jam or chutney, create an item of handicraft or take a photo or two. And the children's classes including an edible necklace (make it, enter it, eat it), a spring collage, a map of your village, mean your youngsters can join in the fun.

Potatoes for the 'grow one tuber in a container' competition will be on sale. Plant your potatoe, keep it fed and watered and when it is 'dug up' and officially weighed in September the person with the heaviest yield will win £10 - and a couple of roast dinners with the freshest potatoes.



Plant sale and coffee morning, Saturday 7th May 10am - 12 noon Oaklands, Nounsley Road.

Information from Clive Emberson on 01245 380704.

Back in time on the railways

An educational, fun day out for Year 4 children from St Andrew's Junior School

Dressed in Victorian clothes of the time (see the girls pinafores and mob caps, the boys in waistcoats and caps) Year 4 boys and girls spent the day on the Colne Valley Railway. On their return they were asked to write a letter describing their experiences to someone they knew. Here is a selection from some of their writings.

Dear Chloe

I am writing to you to tell you about our school trip to Colne Valley Railway. We were dressed as Victorians. We went to see Punch and Judy - Punch had a loud voice. Judy asked Punch to baby-sit the baby so Punch sat on the baby and then threw it down the stairs. Judy phoned the policemen and then Punch hit him with a stick. It was very funny. Mr Judy and Mr Punch kissed.

When we were on the Royal train ride we had to be silent and the boys had to take their hats off. When the soldier said attention we had to stand up and when he said at ease we had to sit down. Queen Victoria said, 'Hello and how are you?' to me. The train seats were very comfortable.

In the classroom the teacher said we would not get a good paid job without school. We did our 2 and 5 times tables and we looked at the Union flag.

Love Mollie

Dear Nanny

I am writing to tell you about our school trip to Colne Valley Railway so you know what happened because I think it would be nice for you to know how much fun I had. First Sir Rowland Hill told us about the stamps during Victoria's reign and showed us a real Penny Black.

We went to a classroom. In order to get into the classroom we had to make a boys' line and a girls' line. The girls went in first while we waited in the rain. Once we were all in the classroom we sat on benches and we had to say 'Good morning Mr Tomkins'. It was nice to know what it was like in Victorian times but the teachers were very strict. At the end of the classroom experience we did a prayer. When we left I had to do a little nod to him.

Love Ben



Dear Daddy

On my trip to Colne Valley Railway we met Sir Rowland Hill and he told us about a Penny Black and that it would cost (today) about £500 without the sticky bit on the back but with the sticky bit on it, it would cost £1000.

We went on the Royal train ride and Queen Victoria talked to some of us. Also there was a soldier who was telling us to stand to attention and at ease. Finally we went to the classroom where a very strict man checked our hands. I had a great day.

Love Mia



Dear Nan and Grandad

I had a fantastic school trip to Colne Valley Railway. We went for a ride and Queen Victoria was on the train so I was incredibly nervous - the boys had to take their hats off. When the train stopped at the other end Queen Victoria came walking down the carriage and asked us some questions like how we got here but when the train started again she had to go back to her carriage.

Lastly we went in a Victorian classroom where the teacher was very strict. When we came out the boys had to bow and the girl curtsied. Overall I had a fantastic trip.

Love Christopher

Parish Council news

**Lisa Miller, Clerk to the Parish Council, Chestnut House, Church Road,
West Hanningfield, Chelmsford, Essex CM2 8UJ Tel 01245 403071
Email: parishclerk@hatfieldpeverelpc.co.uk**



Vacancies on the Council

The Parish Council still has vacancies, so anyone interested in local issues and has a few spare moments each month, please contact the Clerk on the above.

Planning

All planning meetings are open to the public. Notification of these meetings will be erected in the village notice boards three clear days prior to each meeting.

The following applications have recently been made

Construction of new front dormer at 103 Church Road. Erection of 145 dwellings, public open spaces, landscaping, new vehicular and pedestrian access, highway works, foul and surface water drainage infrastructure and all ancillary works on land north east of Gleneagles Way. Erection of side extension and new bedroom built into the roof at 22 Willow Crescent. Replacement of access door at rear of property with an equivalent door at Brewery House, The Green. Outline planning application for the demolition of existing buildings (10 & 12 Plantation Road) and residential development of up to 160 residential dwellings, open space, associated infrastructure including means of access on land east of Plantation Road, Boreham.

The following applications have recently been granted

Erection of single storey rear extension at 31 Priory Farm Road: extension will extend beyond rear wall of original house by 4m, with a maximum height of 4m and 3m to the eaves of the extension. Erection of ground floor extension at Fairfields, Mowden Hall Lane. Replacement of access door at rear of property with an equivalent door at Brewery House, The Green. Erection of single storey rear extension (part) and two storey rear extension at 13 The Pines. Application for a non material amendment following grant of permission for rear dormers to be constructed to form one dormer at 105 Church Road. Erection of 3 bed dwelling house at land rear of 1 The Limes. Erection of single storey rear extension at The Bourne, Nounsley Road. Erection of two storey side extension at 50 New Road. Erection of porch with a flat roof to the front elevation of the dwelling at 28 Priory Farm Road.

The following applications have recently been refused

Demolition of existing garage and single storey rear extensions and erection of side extension incorporating internal garage. Adapt existing roof to incorporate new pitched to roof to side extension and new dormers to front and rear of roof to serve new bedroom accommodation at St Andrews, Ulting Road. Erection of two storey side extension and single storey front extension at 6 Church Road.

Tree Preservation Orders granted

Work to trees at Highwood House, Maldon Road (part refused/part granted); at 14 Laburnum Way; at 1 De Vere Close; at 28 Woodham Drive.

Parish Precept

The budget for the coming financial year has been set at £65,947 with the precept set at £55,328. This corresponds to the Parish element of the Band D Tax Rate being £31-76

**Website Don't forget you can view all Parish Council news on its new website which can be found at:
<http://www.essex.info.net/hatfieldpeverel/>**

Council meetings - village hall 7.30pm first Monday of the month unless otherwise stated. 7th March, 4 April

Good turnout for New Year's day walk

Ken Earney

Our recce for this walk on the previous Tuesday was warm, in glorious sunshine and dry. Then came the rain. New Year's day was fine, but conditions underfoot were a bit muddy following Storm Frank's recent downpour. Twenty six of us, suitably attired, and two inexhaustible dogs took part in our traditional walk.

Starting from the Nounsley play area, we first headed towards the churchyard to look at the two tombstones featured in the December Review. Then clockwise round a route past Old School Court, Footpath 40 over to the fishing lakes then up to the A12 cyclepath, very noisy but soon over. Footpath 29 to Wickham Bishops Road, continuing on past Willowmead Nursing Home, the very pleasant brook-side path, footpath 30 through Moor Gardens Wood, Letch's Corner and back to the play area.



State of our public footpaths

Ken Earney, Parish Paths Partnership

It can't have escaped the notice of anyone who has used our public footpaths in recent months that some of them are in a bit of a state. A few have had flooded sections, in one case the path becoming impassable for a period.

The most likely reason for these problems is the waterlogged state of the ground resulting from the recent wet winters, with intervening summers not permitting the subsoil to dry out before the next lot of winter rains, the water then remaining on the surface. On FP7, the worst affected path running beside the allotments down from the Scout and Guide HQ, a mini-lake has formed mid-way between the gates on a number of occasions over the past couple of years, and recently a lengthy stretch of muddy slurry developed before the lower gate. It's difficult at present to envisage a quick-fix remedy here. On one of the other paths however the landowner has agreed to improve drainage in the immediate vicinity, which should prevent further flooding on that one.

But let's put this in perspective. Our minor problems with muddy footpaths and difficult to work gardens and allotments are as nothing compared to what the folk up north have experienced over the last few months.

All of the cases, along with other issues, have been reported formally to our district Footpaths Inspector at Essex County Council who no doubt has had to deal with many such reports over the whole of her district. This will in time lead to remedial action in many of the affected areas, but money is tight, and 'nice to have' services such as public rights of way presumably come low in the pecking order for the local authority.

Parrot story

Man sees an exotic parrot at an auction. He really wants it and gets caught up in the bidding, going higher and higher until he wins. Paying for it, he says to the auctioneer. "I hope it isn't a dud. I'd hate to pay this much money only to find out that he can't talk!"

"Course he can talk," says the auctioneer. "Who do you think was bidding against you?"

Changes within the Scout Group

Jo Jarvis, Cub Scout Leader

We say good bye to Suzanne Evans who has been our secretary for the last five years and thank her for all her hard work.

Unfortunately Phil Ware has had to drop out as Scout Leader - we thank him for his help but we welcome Chris Phillips as the new Scout Leader. Chris has many years experience within the Scout movement in Chelmsford District as a leader and has been chairman at Hatfield Peverel for the last couple of years.

All units have returned after the Christmas break refreshed and ready to enjoy new activities.

Cubs enjoyed a games night, and as the Cubs are celebrating 100 years have many evenings planned around the number 100 - the first being 100 ways to keep fit. They also are completing their Personal Safety and World Faith Badge with a visit to the Salvation Army HQ (*see photograph and article page 16*) and having a go at making sweets. The next evening around a 100 will be Cubs' activities from the last 100 years.

If you have photos relating to 100 years of Cubs in Hatfield Peverel, or old uniforms, the Cubs would like to have a look at them - they have an evening in late February planned for this activity.

As a Scout group we are looking for a new secretary and chairman: if you feel you can help in any way please contact Nick, Group Scout Leader.

Valentine's Day and Good Friday

Hatfield Peverel Lodge welcomes you...

Valentine's Day afternoon, 13th February

Everyone is welcome to a **Valentine's Day tea party at Hatfield Peverel Lodge**. Doors open at 2.30pm with singer Robert Jerome.

Good Friday, 25th March, from 2.30pm

Fun for the children - Easter Egg Hunt in the garden if weather fine, otherwise inside. Residents' **Easter bonnets** to be judged by the children. Come and join us.

Information from Nicki Wallace, 380750

Our Library looks to the new year



We had a lovely Christmas with the library decorated by St Andrews Junior School, the Infant School and the Girl Guides

Looking forward into February and March - **Knitting and Stitching group** meets on the 2nd Wednesday of the month 10am until 12 noon. Call into the library if you are interested or give Wendy Morrissey a ring on 01245 233482.

Crochet - we have a customer looking to start a **crochet group** in the library this year. Anyone interested can leave their contact details with library staff. We will let you know the start date.

Chapter Four, Book Group meets on the 4th Tuesday of the month, 1.30 - 2.30pm. The group is reading Stoner by John Williams for the February meeting. Extra copies are available for non-group members wishing to read these titles.

Mother/Toddler Rhyme Time Tuesdays 2.15pm

Monday 16th February we are hosting a Family Learning activity run by Simon Burwood about First Aid basics. This will be a free 2-hour fun activity for parents/grandparents and children (max of 2 children per adult). For more information or to enrol, contact the Essex Course Booking line on 0345 603 7635 and quote course code GWL2B02.

Pirate Craft Activity - during the Easter holidays in March we are hoping Simon will run this activity. For information ring 01245 380988.

Hatfield Peverel regular opening times

Tuesday, Thursday 1 - 5pm

Wednesday, Saturday 9am - 1pm

Recycling your Christmas tree does not mean leaving it propped up against one of our litter bins. These bins are the responsibility of a team of litter pickers who work hard to keep our village tidy. Rubbish left outside the bins will not be taken away by the council - **it is not collected by your friendly litter pickers either!**

On with the lights!

Shining brightly on an otherwise rather cold and damp afternoon, on 13th December the Christmas tree lights outside the village hall were turned on by Vic Olley who, with a cheer or two from the onlookers, clicked the switch - and there was light!

Father Stephen followed with a prayer and blessing, and onlookers moved swiftly into the warmth of the hall where mulled wine, mince pies, shortbread and pumpkin cake were served and carols sung. School children sang Away in a Manger and St Andrews Church and Hadfelda Ladies choir, and Springers got everyone into the festive spirit.

The Party in the Park working group, with the support of the Parish Council, organised this happy occasion and would like to thank the following people for their help.

John Upson - Upsons Farm Shop (who donated the tree); Angela Wagstaff - Allwag Promotions; Gary Driver - Civil and Groundwork Contractors; Brad Adams - USS; David and Damon Wallace - DW Maintenance; the Co-op; St Andrew's Church and Hadfelda Ladies choirs. The school children who sang Away in a Manger, the Scottish piper, Paul Young, Lara George and Springers (AOD), Community Association and the bar staff, Parish Council. And everyone who donated mince pies, shortbread, pumpkin cake.

Many thanks to you all.



Conflict in the 19th century Essex Countryside

WEA

The January Spring term with tutor Ted Woodgate is a thought-provoking look at the plight of Essex farmworkers and their families during the early 1800s and 1900s with low wages, unemployment, unscrupulous farmers and farm managers.

Tuesday 1st March - speaker Brian Bourn on 'The rebuilding of the Harrison Clock', Methodist Church hall 8pm.

Tuesday 22nd March 10am AGM, refreshments

Information from Lesley Naish, 01245 380037.



Once a month Wickham Bishops village hall is turned into a picture house. Doors open at 7pm, film starts at 8pm, and the cost is £5.

Friday 26th February - Spectre

Friday 25th March - The Lady in the Van

Tickets are available from The Health Food Shop, 12 The Street, Wickham Bishops or by phoning mobile 07928 808719.

Website www.reelpicturehouse.org

Joyce Pearl Fitch 1929 - 2015

Thank you to Jacqui and Mick for these reminiscences of Joyce's long and fulfilling life in her much-loved village. Her writings will be cherished by us all and remind us of a long gone rural life and the people who inhabited it



Joyce was born on 13th September, 1929, the first child of Emily and Charles Pease at Chestnut Cottage, The Street, Hatfield Peverel. She spent almost her entire life in the village and saw many changes during her 86 years, some for the better, some not so good, but her love and pride in it remained constant. Her father Charlie was the local postman, loved by everyone. He was like Father Christmas, in nature and looks, and Joyce adored him. In addition to being postman he repaired bicycles - as soon as you parked your bicycle against the wall at their home, he checked the tyre pressures and made sure the bell worked.

Emily had been a cook in service and baked the most delicious meals: although not well off, they were well fed. In early years Joyce enjoyed working in the fields - especially pea picking - with her mother and younger brothers Keith and Tony. In 1934, at the age of four and a half, she had her first day in the infant class at Hatfield Peverel. She loved school, and was in awe of her teachers and hoped one day she would be like them so she could chalk on the blackboard whenever she wished!

At the age of 11 she was awarded a scholarship to The County High School for Girls in Chelmsford. Here she met Jill Beach, who was to be her lifelong friend. 1945 was a pivotal point in her life. At Boreham Village Hall, at the Christmas Eve Dance, to the sound of Glen Miller, she met Mick Fitch. Romance blossomed, and their love of Glen Miller was taken a step further when Mick would take his wind-up gramophone down to the river where they would picnic. Mick was working in Seabrooks office, and Joyce was studying at the High School. The romance almost floundered when Mick sent a note to Joyce saying he wouldn't be able to see her any more, as cricket practice was about to start! He found cricket was no substitute for Joyce and he sent a second message, saying he would like to see her again. September 1947 Mick joined the navy, based at Chatham, and Joyce and friend Gill started their Teacher Training Course at Saffron Walden College together.

In 1949 Joyce realised her ambition to become a teacher. In the same year Joyce and Mick married at St. Andrews Church. Her first teaching post was at Witham Church of England Primary School. Whilst here, Mick and Joyce became parents and Jacqui was born in October, 1952. Being a modern woman, Joyce resumed work a few months later and Jacqui was left in the safe care of Charlie and Emily during teaching hours. In 1953 she took up her teaching post at Hatfield Peverel School. Proud to be teaching where not only she but also her father had been a pupil, she put her heart and soul into making a career that would last all her working life. Her time here made a lasting impression on many lives. Her teaching skills were second to none - she took Dancing Club, swimming lessons, and visited local places to bring learning to life for those in her class. Bringing a joy of learning to her pupils culminated in the most adventurous of all her ideas - she was teaching French to the children, and she took top juniors to Paris for a week on alternate years.

In 1979 Joyce retired early due to ill health. She found time to enjoy her garden, and research both Pease and Fitch family histories where she unearthed details that went back many centuries. She started writing again and produced three wonderful books on Hatfield Peverel, and finally one on the school. One of the bonuses for her was being able to visit village people and listen to their stories. Without her, so much of the history of the village would have been lost. She continued being a valued friend and member of the community for many years. She enjoyed Hadfelda WI, of which she had been one of the original founders and her evenings singing in the choir was another favourite pastime.

Joyce touched so many lives ~ she was a remarkable lady who has left us with many fond memories and the wonderful legacy of her books. She was a one off.

50th anniversary celebrations for Hadfelda WI

Chris Marks

To mark our anniversary we held our annual Christmas meeting in the Church hall but instead of members donating plates of food we ordered in from a well known supermarket and we gave them full 'Marks' for the spread. We had a very good magician - Mr. Paul Clancy - who entertained and baffled with his slight of hand, producing bottles of wine from burst balloons which we saw him blow up and guessing a word picked out at random from the Oxford English Dictionary. We don't know how he got the answer to a very difficult sum to make the total of 9.12.15 - the date of this evening!

Members enjoyed a lovely three-course meal, also in December, at The Bull Great Totham where they were entertained by Abba Devine, a tribute group who got everyone singing and eventually dancing. Thank you to our committee for arranging these events.

January - the beginning of a new year already! This month we had a speaker from Broomfield Hospital Radio - thankfully (in a nice way!) not too many people had heard Mr Eric Smart before! The radio started in a caravan parked in St. John's car park playing records during the day - it moved to the gate house in 1994 and in 2002 broadcasts became 24 hours to patients. Speakers near the bedside were switched off at 9pm, music could then be heard through headsets and **no rock and roll** during the night!

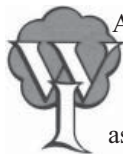
In 20007 a studio, provided by the health service free of charge and transmitting to a wider audience through the internet, provided ex-patients with the same facility at home - requests could be made by relatives for those in hospital. 2014 it expanded to 2 studios with all modern equipment. Requests are sent in and one of the team is allowed to visit all the wards (except Maternity, burns and children's ward) to ask if patients would like a request played for themselves or perhaps for someone's birthday or to commemorate something.



During his talk Eric kept us busy with a musical quiz - who were the singers, what was the music, what show had it come from? They have access to over 30,000 tracks in the system and have their own Hospital Radio website or if anyone wants to **telephone a request for someone they know in Broomfield: the number is 01245 516450.**

Our WI has been asked to make cakes for the Party in the Park on 9th July. The 99th County Annual Meeting is at Southend on 11th March.

On 24th February in the Church hall, Sue Morgan will tell us about her 'interesting times' as a bat surveyor! New members are welcome - I can recommend the tea and eats!



Langford and Ulting

2016 Art Show

**Saturday 19th/Sunday 20th March
Langford village hall 10am - 5pm**

One of the most popular art exhibitions in the area, well known for the high quality of work and attractive prices

On show 310 pictures in all mediums by local artists and artists from Essex and Suffolk

Come and enjoy the atmosphere, tea and homemade cakes. Admission £1 with programme, children under 12 free

Details from Caroline Spong, 016721 855220/email cspong777@btinternet.com

2015 - a stellar year for Hatfield Peverel Football Club

The Football Club looks forward in 2016 with success both on and off the pitch.

The club saw a number of firsts in 2015 as it spent the first season operating its new clubhouse. Notable successes included:

- * First ever girls football team formed, played and scored their first ever goal
- * Hosted an Essex FA girls football tournament
- * Hosted a summer football tournament
- * Ran 17 youth and 2 men's teams, our highest ever numbers
- * Started training a women's football team.

The establishment of the clubhouse in 2015 proved to be an outstanding success as we were able to host a number of children's birthday parties, a Christmas party as well as provide a great place for parents to mingle and enjoy each other's company. Thanks to our team of willing and hard working volunteers our grounds are maintained to an exceptionally high standard which enabled us to pass our annual Football Foundation inspection with flying colours. Thanks to the hard work of our Treasurer we were able to invest a significant gift aid return into new goal posts for every pitch at our ground.

As we look forward to 2016, first we hope for good weather to enable us to complete our scheduled games, then as a club we are looking to grow and develop our FA accreditation, have more FA qualified coaches and ensure our 200+ players and families enjoy their football with Hatfield Peverel Football Club.



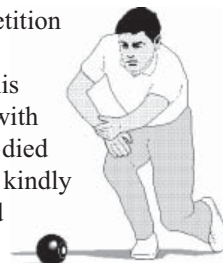
Christmas party then down to the bowls!

Rita Thomson, Club Captain (380038)
www.hatfieldpeverelbowling.org

The Bowls Club held its Christmas party in December - everyone had a great time - and bowling returned on 2nd January with 'Round the World'. Its a busy time with club competitions taking place.

Its been a busy January. The Jim Cowell Triples was played on the 8th when thirty six bowlers took part. It's twenty years since Jim passed away, we play for his shield in his memory. Winners were Steve Spooner, Maurice Ball and Roy Peear. On the 15th it was a singles competition for the Chrissie Hatfield Plate, winner Dennis Partridge. Chrissie was a gifted artist and she painted the plate as a prize, but we thought it would be a lovely memory to play for it in a club competition.

The club held a new competition on Friday 22nd for the Joan Cowell Memorial Trophy. This was won by Jackie Spooner with Pam Stewart runner up. Joan died last year and her family have kindly donated the trophy; she loved her bowls and we will be honoured to play for it.



The league had a break over Christmas and New Year: the A team at the moment is top of Division 3 on shot differency. We played our first game of 2016 on 22nd January at home against Heron Park Hawks from Westcliff; the B team is getting better results this season and is fifth in Division 7.

We have had several new members and they are enjoying the bowling. Its a lovely game and you meet lovely people from other clubs; come and give it a try, you will be made most welcome.



Girlguiding Group

Julie Down, Rainbow Leader

A busy time for Rainbows with the run up to Christmas. For over a year we have been raising money for Essex Air Ambulance, and completed the Challenge badge. We went to visit the Air Ambulance at Earls Colne and it was interesting to learn how much it costs to run the ambulance. We looked inside and were told lots of useful information about the workings of it and who travels in it. While there we presented them with a cheque for the money we had raised.



We have been raising money with boot sales to help subsidise activities and we thank the Every Members Club in Hatfield Peverel for their kind donation. We had party held by Crafty Choclatiers and made chocolate pizzas and lollies. We made guys for the Bonfire Night competition for Witham Round Table firework display.

Most of the girls had a one night sleepover for the Festival Roundabout badge, taking part in activities about world Festivals. Some girls and Leaders paraded our own flag at the Remembrance parade and service. Christmas preparation was busy - we decorated photo frames, made Rudolph gift tags with monkey nuts and a snowman card made with buttons! Some of the girls attended the Candlelight service at the Methodist Church and joined in with the activities. We finished for Christmas with a visit to Winter Wonderland at two of our Leaders houses and a treat of fish and chips - thank you Mr Chips for a great service.

Last term Brownies completed the Seasons Badge and we looked at all things Autumnal. We cooked seasonal vegetable soup, went for walks to collect natural materials for collages, made bird feeders, looked at hibernating animals, made animal finger puppets and had an evening at Tesco's 'Farm to Fork' evening to find out where our foods come from. We ended last term with a Christmas-themed pyjama party. We are now concentrating on the Division Handicraft Show.

Guides last term used the Senior Section challenge to enter into a taste of new things. This brings us a chance to gain another badge and, by thinking ahead a little one or two other badges were awarded too. We've done a variety of activities from First Aid to Christmas sweets and cookies. We had a visit from a young Scout leader who had been to Japan to take part in the World Jamboree which was interesting and inspiring. We once again made displays to go into the Library for the Christmas season. We made three displays - they seem to get better and better each time.



We attended the candlelit service at Hatfield Peverel Methodist church, along with the Brownies, Rainbows and all the leaders, a lovely afternoon and followed by cups of tea and delicious home baking. There is always a warm welcome from Rev Sue and the congregation.

Guides finished last term by taking a walk around Maldon looking for reindeer and their names in shop windows. Two of our new members made their promise as Guides standing at the top of Market Hill (hope it was a little bit special for them) and then we hurried down to McDonalds to warm up and enjoy a treat or two. We are heavily into plans for Jamboree, a sleepover (or two) and many other adventures.

News from St Andrews

It seems a long time since Christmas and people have just stopped saying 'Happy New Year'. Christmas at St Andrews went off with a swing, with Carol Songs of Praise, the Christmas coffee morning, a Messy Nativity event to which more than 50 people of all ages came along; and the services on Christmas Eve and Christmas Day. We should not forget the Carol Services and the Junior School Christmas play.



We are now in the Epiphany season, where the readings concentrate for the most part on the revelation of Christ to the world, both Jews and Gentiles (non-Jews). By the time this magazine comes out we will have entered Lent, which is very early this year. Ash Wednesday will have a special service entitled 'Hold Fast to What is Good!' where a recent video of what is happening in Syria to the Christian communities. Despite daily news items concerning the refugee crisis, many Christians have opted to stay in their own communities and face out the persecutions there.

Other dates to note are:

Ash Wednesday 10th February 7pm Service 'Hold Fast to what is Good!'

Saturday 5th March - Coffee morning and Mothering Sunday preparations in the Church hall and Church

Sunday 6th March - Mothering Sunday a special service at 10.15am. Keep an eye out for posters and do come along on the Saturday before to enjoy coffee and help with flower bunching and simnel cake making.

Finally we are going to lose Owen and Mary Daw from our community during February as they will be moving north to be closer to their families. Many of you will know them in different capacities and I am sure that you will wish them all God's blessings as they settle into their new community.

Methodist Church

In our December report we thanked supporters who had helped us raise over £300 for the Tearfund Charity which works to provide sanitary conditions in poor countries. The money has enabled us to purchase a block of three toilets for a school in Bumpe, Sierra Leone, and we have received a picture to show it in-situ. Thank you to everyone for such a great effort.

We are also pleased that 29 children's Christmas boxes were collected for Operation Christmas Child, this year to go to the Ukraine. Once again, thank you to all who helped us reach this number.

Our service on 15th November was led by Frances and Phil Couch who are two of the volunteers for the Chelmsford Street Pastor scheme. This was pioneered in London in 2003, developed as a response to the problem of anti-social behaviour caused by excessive drinking and drug taking and there are now 300 schemes throughout the country. Their purpose is listen, support and care for people. The Chelmsford scheme has 40 trained Pastor Teams of 4 Pastors (preferable 2 men and 2 women) who patrol hotspots on the streets between 10pm and 4am at weekends and some Wednesdays. On a weekend night up to 15000 revellers can be in Chelmsford which can produce tension and tears. Their help can range from getting a taxi, diffusing arguments, providing water to drink, first aid, foil blankets and flip-flops to wear.

Frances and Phil gave us a few of the examples of the people they had aided and we were full of admiration for the practical and emotional support being given. The scheme is self-funding and is welcomed by the police and City council and has been proved to reduce crime and anti-social behaviour.

Again we were delighted to have the Rainbows and Guides with their families for our candlelit Carol service on 6th December. Our Church was decorated with hundreds of candles and looked very festive. The

service, led by our Minister Rev Sue King, was a very enjoyable occasion in which the Christmas story was told. The girls joined in by illustrating each letter of 'Happy Christmas' with their own thoughts on Christmas. Afterwards we provided tea and cakes which were well deserved. We hope the girls and their families enjoyed the afternoon, our congregation certainly did, and hope to welcome them back again.

John Clemo led our Christmas Day service in his own unique way, assisted by 'volunteers' from the congregation which included some Australian visitors. The service conveyed the true purpose of Christmas by celebrating the birth of Jesus Christ. Our Christmas Day offerings of £85 were given to Action for Children, the Methodist charity which looks after neglected children.

Regular events

Every Sunday 11am	Morning Service - everyone welcome
Every Thursday 10am –12 noon	Open Door - come and join us for tea/coffee and friendly chat
2nd Saturday in month 10 -12noon	Coffee morning and cake stall

Christmas readings and carols

Mothers' Union - Jean Ashby

At our meeting in December, we spent a pleasant afternoon celebrating Advent, a time of hope, obedience, trust and guidance in preparation for Christmas. We began by writing a prayer on a star which Mary had given us - these were hung on our Advent tree. We also made a contribution to the Church's collection for our suffering Christian brothers and sisters in Iraq. Our meeting continued with our usual programme of readings and carols chosen by us all. These proved very enjoyable and entertaining and we ended the afternoon with a cup of tea plus delicious mince pies made by Ann Clements. Thank you Ann.

January 2016

At our first meeting of the New Year, Fr Stephen began with our communion service. Bearing in mind the Week of Prayer for Christian Unity is from 18th - 25th January; he took as the theme of his talk, 'The Nature of Love'. One of the best known sayings of Jesus to his disciples was to 'Love one another as I have loved you, and to love your neighbour as yourself' If we are lucky, we can spend our whole life being surrounded by one type of love or another. However, the greatest and most splendid love of all comes from our Heavenly Father to us. We are enabled to experience these many kinds of love because he loved us first and our lives will be enriched if we put him first everything we do.

We can only grow in love for God if we talk to him often in prayer, and ask him to forgive our mistakes if we forgive others. God can't answer our prayers unless we love each other.

We followed the service with our AGM: our leader Pat said during the past year we had enjoyed a variety of speakers and she went on to thank those who had helped her during this time. Unfortunately we shall be losing our member and dear friend Mary Daw in February as she and Owen are moving north to be nearer their children and grandchildren. We shall miss her so much because she has been such a support to us all; playing the piano and deputising for Pat at short notice. We send all our love with them both and wish them happiness in their new home. Pat also thanked our treasurer Joan Richardson for her excellent work over 25years. Our accounts are in a healthy state and Joan is now handing them on to another member Andrea Barr who has very kindly agreed to take them over so Joan can enjoy a well-earned retirement. We gave Joan a vote of thanks for her work.



Other notices

8th February. Invitation to meet our MU President at St Michaels Church, Mile End, Colchester 10.30am - 2.30pm. If you wish to go let Pat know.

4th March - Womens' World Day of Prayer service at Witham Methodist Church.

6th March - Make a Mother's Day. Pat will be making a collection for this at our next meeting.

Hatfield Peverel Cub pack visit The Salvation Army

As part of their work to obtain their World Faith Badge, with their leader, Jo Jarvis, and other helpers, 17 boys arrived to discover how the Salvation Army people express themselves in worship and service.

Major John Turner welcomed them, and assisted by Major Nina Turner and Captain Graham Slader, the Cubs entered into activities in three parts of the hall. There was a 'Worship Zone', 'History Zone', and an 'International Zone'. There was a break when Major Nina served drinks and biscuits, and the final activity was Captain Graham supplying each Cub with an item of uniform and taking pictures. This was observed and enjoyed by parents who had arrived to take their boys home. Major John was presented with a framed certificate expressing thanks for the help given to the Cubs. The evening was both educational and enjoyable.



Ride for Helen 2016 – 8th May

The third year of Ride For Helen - raising money on behalf of Helen Rollason Cancer Charity - promises to be the best yet. Cyclists from across the county and beyond will start and finish at Crix, Hatfield Peverel, with a choice of four circular routes through the beautiful Essex countryside.

Last year the event raised more than £38,000 and with interest continuing to grow, the charity is hoping that 1,000 + cyclists take part in 2016, all riding to support people living with cancer.

The four routes of 6 miles, 15 miles, 35 miles and 65 miles offer distances for the beginner to the advanced cyclist. The new 6-miler is ideal for families looking for a sporting challenge, and for each paying adult, there is one free junior place. The event base will also feature refreshments, entertainment, a photo point, post race relaxation opportunities, and even retail cycling therapy.

To register go to www.rideforhelen.co.uk, or to find out more call 01245 380719, or visit www.helenrollason.org.uk/ The first 150 riders to register will receive a free t-shirt. You can also find out more about the great work that Helen Rollason Cancer Charity does at the website mentioned.

*** Could you spare a couple of hours to volunteer on the day as a route marshal, or help out at the Hatfield Peverel event base? Call 01245 380719, or email fundraising@helenrollason.org.uk**

RIDE FOR HELEN

SUNDAY 8 MAY

ADULTS from £15
One FREE Junior with each Adult

JUNIORS £8
16 and under

6
miles

15
miles

35
miles

65
miles

To find out more call 01245 380719
To register visit www.rideforhelen.co.uk

Four circular cycle routes through the Essex countryside

Supporting
people living
with cancer

Supported by

Essex Audi Group

Helen Rollason Cancer Charity
Registered charity number 1052861

FREE T-Shirt for the first 150 riders to register

Flower Club welcomes you

Susan Thomas, Secretary (01245 261205)

Hatfield Peverel Flower Club would like to welcome members and visitors to their monthly meetings in the village hall, Maldon Road. We meet on the first Wednesday of the month from 7.30pm for an 8pm start and serve tea and coffee during this time. Visitors are charged £5 for the evening.

On 2nd March Harry Brickwood is giving a talk which he has called 'Beautiful gardens to visit within easy reach of Chelmsford'. Again, we will be serving refreshments before enjoying our talk, and we will also be holding a raffle.

Please visit our website www.hatfieldpeverelflowerclub.co.uk to learn more about what we do, or call the number above.

Sunshine on the righteous!

Hatfield Peverel Walkers - Graham Bushby

A warm and bright January walk on the last Thursday of the month. Without a cloud in the sky, the sun shining and a temperature approaching 10 degrees only nine walkers were tempted out to Heybridge Basin on a walk along the sea wall and back down the Chelmer to the lock gates. Although comparatively short with no quagmires and comfortable walking it was enough to built up a healthy appetite and thirst for those who wanted either coffee and a cake or a pub lunch at the local feeding points!

Coming walks are on 25th February led by Chris Johnson (382764), depends on the weather so he will send out details and meeting points info), 31st March and 28th April. For information contact Graham on 380472.

Mighty Oak Trees Childcare

This nursery school (Ofsted rated good) attached to the village hall is open from 7am until 6pm. In a lovely setting on the recreation ground the nursery offers:-

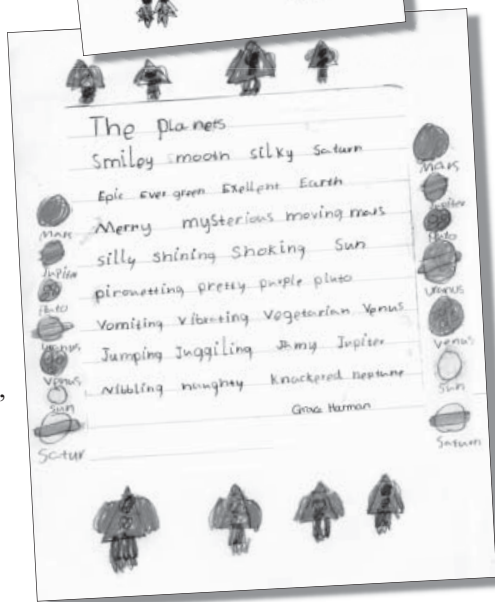
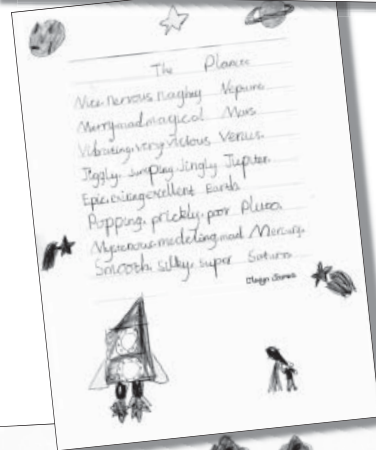
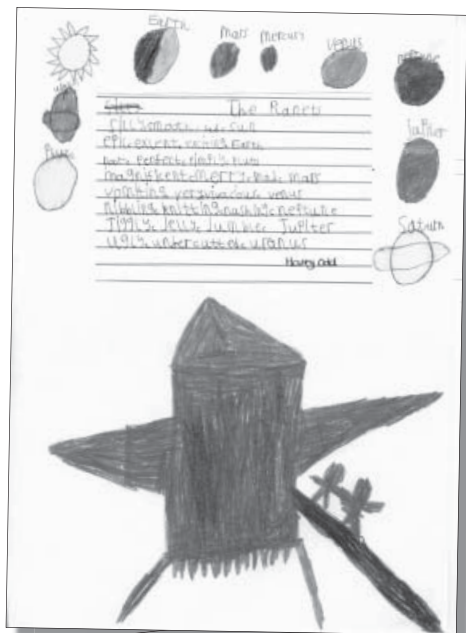
Breakfast Club (healthy food) from 7 - 8.30am when the children are accompanied to school

Pre-school 9.15am - 2.45pm. Children bring packed lunch

After school 3 - 6pm.

There are places available: special offers for pre-school children. If you re interested and would like to have a look round, telephone 07538 972770 and book a visit. You will be most welcome and we will be happy to show you around.

Thank you to Year 2 Infants, Harry, Olwyn and Grace, for their writings and drawings about space.



Thirty nine years of the Wine Club - start with a quiz, a carnival and wine whist!

Peverel Wine Club – Vee Green, Secretary (01245 355723)
www.peverelwineclub.co.uk or email
peverelwineclub@hotmail.co.uk

The Wine Club is entering its 39th year with no less enthusiasm and sociability than its early meetings in Denise Brazier's kitchen back in the 1970s! Membership is strong, the programme for 2016 as varied as ever.



We had an excellent Christmas party in December, with a 4-course supper provided by members and committee followed by dancing to live music provided by local entertainer Ian Jordan.

January saw us in the village hall for some brain exercise after the excesses of Christmas, taking part in the now-traditional Club Quiz, set by former Treasurer Lindsey Glasman in the wilds of Devon. Seven teams took part, answering questions posed by Chairman Graham Bushby. A close-fought contest; eventual winners (The Famous Five) gained a tactical victory by saving their joker until the last round (Food and Drink) an obvious favourite. Commiserations to the others, particularly Bob Hill's tiny team of three, recipients of the Wooden Spoon (aka tubes of Smarties!)

We are looking forward to a lively meeting on 10th February entitled Carnevale Italiano, to coincide with Venice's Mardi Gras Carnival. All will be coming incognito in glittering masks, cloaks and spangly scarves to enjoy a tasting of Italian wines and antipasto, interspersed with appropriate games and music.

March 9th will find us indulging in a wine-tasting evening organized as a Wine Whist – nothing to do with cards, just moving around and making decisions about the best wine of the evening. We shall explore wines of one of our oldest allies – Portugal – on 13th April, seeing if there is more to Portugal than Port and Mateus Rosé, amongst the under-valued (and certainly under priced) offerings from this lesser-known member of the EU. If you'd like to join us for a light-hearted evening you would be very welcome, give Vee a ring to confirm attendance on 01245 355723.

The club meets normally on the second Wednesday of the month at 8pm in the village hall, but with some exceptions, so it is always worth phoning first, especially during the summer months.

The Wine Club has its own website, courtesy of the skills of Fred Brown, which can be accessed via the Hatfield Peverel community site at www.essexinfo.net/hatfieldpeverel/clubs-and-societies/ or direct via www.peverelwineclub.co.uk/ Find out about the Wine Club, its activities and its history before you come along.

Welcome to the village hall

Opening times 7pm - 11pm

Come and enjoy a drink and a chat in a friendly atmosphere, you will be made welcome.

Regular happenings

Bingo (third Thursday in month)
18th February, 17th March

Brag (first Friday in month)
4th March, 1st April, 6th May

Poker (third Saturday in month)
20th February, 19th March

Darts Monday nights
Ladies team Tuesdays

Booking for hall/meeting rooms
HPCA bookings@mail.com,
Phone Alan on 07741 140732

Village hall (after 7pm)
01245 381481

Facebook
Hatfield Peverel village hall

Yearly membership is £5

Fancy a nice cuppa?

Before tea bags, making a cup of tea was a ritual. Here's how.

Take your caddy of loose tea and measure out a teaspoon of leaves,

Boil the kettle, pour the hot water over the leaves to cover them.
Leave for two minutes.

Bring the water back to the boil, fill the pot and leave for another two minutes. Enjoy - if you have the time!

I'm going to find a tea bag - Ed.



Useful telephone numbers

Please contact the editors for additions/errors.

Age Concern Essex	01245 264499
Anglian Water, 24 hours	0800 919 155
Braintree District Council	01376 552525

Clean Team ring number above and ask for
Customer Services
Witham Area Office in Witham Library
- for walk-in enquiries only 01376 519625

Churches

St Andrew's (C of E), vicar	01245 380958
Methodist Church, minister	01621 853423
Salvation Army, officer i/c	01702 290250
Catholic Church, Witham, priest	01376 512219
Citizens Advice Bureau Witham	0844 4994719

Drop-in sessions Mon/Tue/Thur/Fri 10am - 1pm
Appointments only Thurs afternoon 1 - 4pm

Doctors, health services

Hatfield Peverel doctors' surgery	01245 380324
Boreham doctors' surgery	01245 467364
NHS - non-emergency helpline	111
Pharmacy, Hadfelda Square	01245 380130

Electricity - emergency 0800 7838838

Essex County Council 01245 492211

Essex & Suffolk Water 24 hours 0845 7820999

First Essex Buses Ltd 01245 293400

Gas - emergency 0800 111999

Harlequin Children's Centre 01376 535270

Free support and services for children under 5

Hospitals

Broomfield (A&E); St John's,	01245 362000
St Peter's, Maldon	

Libraries

Hatfield Peverel	01245 380988
Tuesday, Thursday 1 - 5pm	
Wednesday, Saturday 9am - 1pm	
Witham	01376 519625

Police Non-emergency calls 101

Use 101 also for the local officer

Emergency calls 999

Witham Police Station opening hours
Monday - Saturday 12 noon to 6pm

Post Office (in the Co-op) 01245 382787

Railway Information

National Express East Anglia	0845 6007245
National Rail Enquiries (24 hrs)	08457 484950

Registrar of Births, Marriages & Deaths

Witham, by appointment only 01376 323463

Braintree, by appointment only 01376 320762

Relate 01245 258680

Samaritans (24 hours - toll free) 08457 909090

Schools

St Andrew's Junior School	01245 380131
Hatfield Peverel Infant School	01245 380220
Hatfield Peverel Day Nursery	01245 382450
Acorn Childcare	07580 834417

Social Services 0845 6037630

Village Agent Richard Ould 0800 9775858

Village hall (after 7pm) 01245 381481

Let us know of useful services to add to this list

Hatfield Peverel Parish Council

Committees and working parties

Burial Ground Working Party (B)
Country Park Focus Group (CP)
External Audit Review (A)
Football Pavilion (F)
Keith Bigden Memorial Ground User Group (KB)
Neighbourhood Development Plan (N)
Planning (P), Traffic (T)
Village Environment (E)

Councillors (and their working parties)

Lisa Miller, Parish Clerk 01245 403071
parishclerk@hatfieldpeverelpc.co.uk

David Broddle - Chaiman 01245 382829
(P/KB/CP/A)

George Boyd Ratcliff (T/P) 01245 380496

Peter Endersby (E/KB/A/F/PiP) 01245 381919

Bernie Heard 01245 380370

Suzanne Morris 01245 382940

Ted Munt (F chair/E/A/CP/B/N) 01245 381135

Les Priestley (A/N) 01245 380404

Mike Sayer

Linda Shaw (T/N/P/CP) 01245 382669

Diane Wallace (P/CP/PiP/B?N) 01245 381485

Mark Weale (PiP) 01245 381726

District Councillor

David Bebb 01245 381065

District and County Councillor

Daryn Hufton-Rees 07729 458757

Both lists updated Feb 2016

The birth of our village sign

Parish Council members and residents gathered on The Green on 17th September 2000 at midday to unveil the new village sign. John Jarvis, then PC chairman, said the sign had been commissioned by the previous council to celebrate the Millennium.

A small ad hoc committee decided what the sign should depict and it was agreed it should interpret the derivation of the name of the village and recognise what had had a significant effect on the village over the last 100 years.

Hatfield - from the Saxon Hadfelda, a clearing in the woodland or scrub, indicated by an outline of branches of oak and horse chestnut

Peverel - Sir Ranulph Peverel, a favoured knight of William the Conqueror, his coat of arms is placed centrally in the sign

The railway - a Claude Hamilton locomotive built for the Great Eastern Railway at the turn of the century painted in GER livery of midnight blue lined out in red. The carriage was varnished wood

The viaduct - built of bricks from local clay, probably by Marriages. The viaduct spans the River Ter which flows through the Parish to join the Chelmer and Blackwater Navigation at Rushes Lock



Friesian cows

- the breed was developed by Lord Rayleigh's Farms and the milk processed at Lord Rayleigh's Dairies (now Arla Foods) adjacent to the station

Gravel lakes - the village is sited on glacial gravel deposits which have been exploited over the years. The excavations have been completed and the land is being reclaimed - much to the benefit of the wildlife.

Above are both sides of the sign (top front, below back) - do walk down to The Green and take a look at the original, it is a fine piece of work.

Left is Eric Windus, then clerk of the Parish Council, Catherine Voysey, previous chairman, and John Jarvis, then chairman (2000)