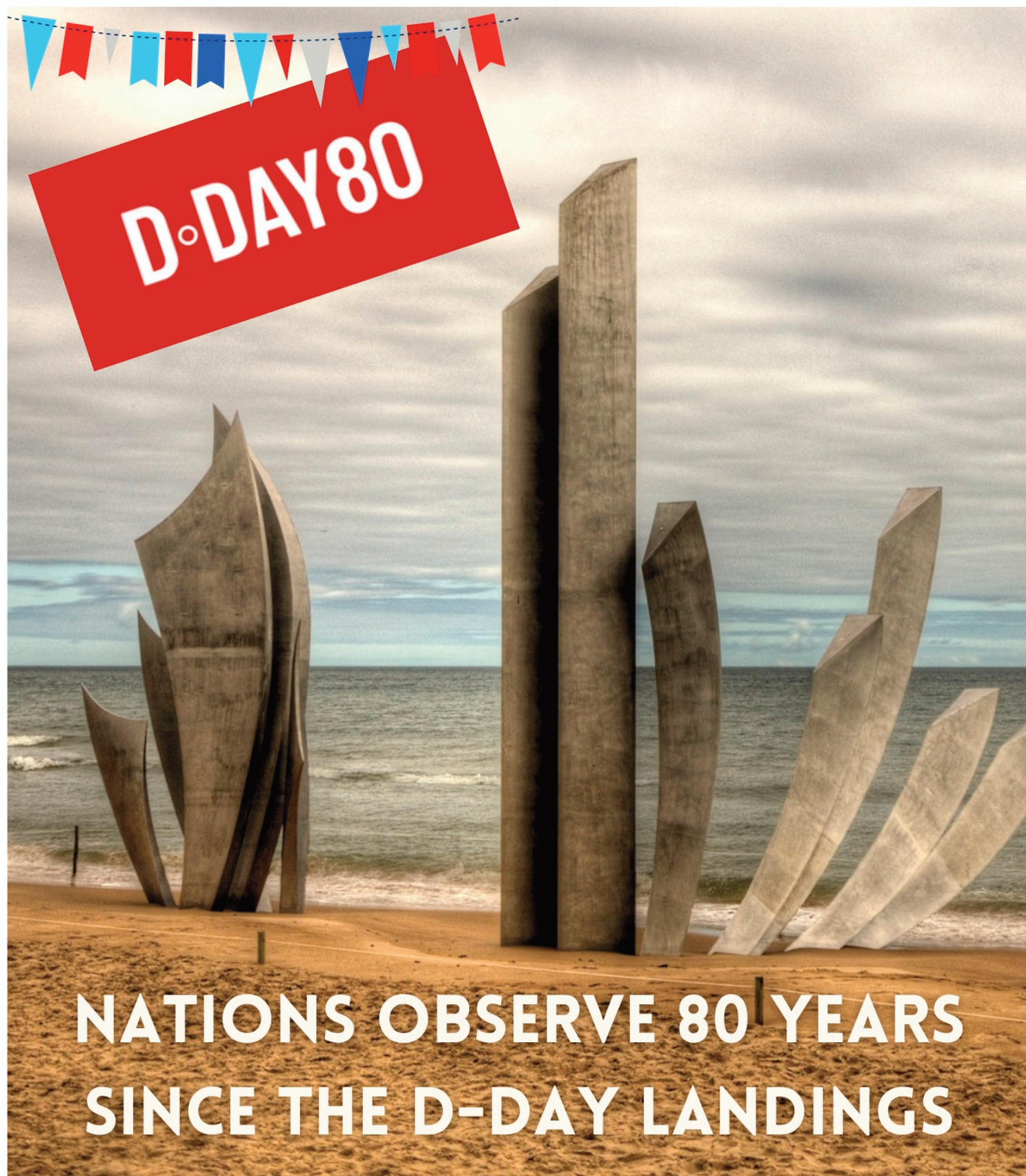


JUNE 2024 | ISSUE NO. 5

HATFIELD PEVEREL

VILLAGE VOICE



NATIONS OBSERVE 80 YEARS
SINCE THE D-DAY LANDINGS

CONTENTS

A Nation Remembers: D-Day 80	3
Latest News - June 2024	4
Hello from your local WI!	5
Join the fun at EMC.....	7
St Andrew's and All Saints.....	8
Hatfield Peverel Walkers.....	9
Sidney House & The Laurels Surgery	10
Peverel Wine Club News	11
Wildlife Champion Update.....	13
Hadfelda (Ladies Group).....	14
News from Hatfield Peverel Methodist Church...	14
Maldon Film Club – What Next?.....	15
St Andrew's Junior School	16
What's on at Hatfield Peverel Village Hall	17
Are you ready for the end of analogue landlines? 18	
Helen Rollason Cancer Charity.....	19

USEFUL INFORMATION

Click below for Parish Council and village information and contacts

[Hatfield Peverel Parish Council](https://www.hatfieldpeverelpc.com/parish-council/) *

[Parish Council Meetings](https://www.hatfieldpeverelpc.com/parish-council-meetings/) *

[Clubs and Societies](https://www.hatfieldpeverelpc.com/welcome-to-our-village/village-culture/clubs-and-societies/) *

[Local Information and Contacts](https://www.hatfieldpeverelpc.com/welcome-to-our-village/community-matters/local-information-and-contacts/) *

Credits:

Editor: Janice Fitzpatrick

communications@hatfieldpeverelpc.com

Publisher: Andrew Smith Print Ltd

andrew@asmithprint.co.uk

DEADLINE for JULY 2024 issue is 14th JUNE 2024. (Any copy received after this date may not appear in the July issue) to:

communications@hatfieldpeverelpc.com

All copy to be supplied as Word documents (docx) including any URL links – max 500 words; photos are to be supplied as separate jpeg files. Please email editor for advertising rates and sizes.

* [Hatfield Peverel Parish Council](https://www.hatfieldpeverelpc.com/parish-council/) – <https://www.hatfieldpeverelpc.com/parish-council/>

* [Parish Council Meetings](https://www.hatfieldpeverelpc.com/parish-council-meetings/) – <https://www.hatfieldpeverelpc.com/parish-council-meetings/>

* [Clubs and Societies](https://www.hatfieldpeverelpc.com/welcome-to-our-village/village-culture/clubs-and-societies/) – <https://www.hatfieldpeverelpc.com/welcome-to-our-village/village-culture/clubs-and-societies/>

* [Local Information and Contacts](https://www.hatfieldpeverelpc.com/welcome-to-our-village/community-matters/local-information-and-contacts/) – <https://www.hatfieldpeverelpc.com/welcome-to-our-village/community-matters/local-information-and-contacts/>

Hatfield Peverel Party in the Park

Free Entry!

An annual family fun event held in Hatfield Peverel for the community by the community.

2024

Music from

The Allykats
Blackwater
Dr. Zero & the
Hotheads
Focus

Saturday, July 6th. 1-10pm

Lots to do, including :

Food, Drink, Ice cream stalls
Community group stalls
Classic Cars display
Hot Steps Dance display
Inflatables
Raffle
Essex Amusements
HP Scouts Tomahawks

Organised by volunteers from the community with sponsorship and help from : Hatfield Peverel Parish Council; our generous sponsors.

Strutt Memorial Recreation Ground
Maldon Road, Hatfield Peverel

Hatfield Peverel Flower Club

Programme for 2024

1st May	-	Helen Hare	- "East of West"
5th June	-	Robin White	- "Looking Back"
3rd July	-	Deb Hart	- "Willow in the Landscape"

A talk and demonstration.

N.B. No meeting in August

4th September	-	Fiona Harrison	- "The Golden Age of Ocean Travel"
2nd October	-	David Wright	- "Wheels in Motion"
6th November	-	Pat South	- "Christmas Sparkle"
4th December	-	Samantha May	- "Festive Fun"



Hatfield Peverel Village Hall, Maldon Road, CM3 2HP
7.30 for 8pm

Refreshments and Raffle

Guests welcome Non-members £7

www.hatfieldpeverelflowerclub.co.uk





A NATION REMEMBERS: D-DAY 80

Eighty years ago on 6th June 1944, Operation "Neptune/Overlord", more commonly known as the D-Day Landings took place on the Normandy coast of German-occupied France.

The most important Allied operation of WWII, and the largest naval, land and air operation in history, "Neptune" was the codename given to the naval operation to transport and land the forces ashore, and "Overlord" referred to the subsequent campaign on the ground.

D-Day required unprecedented cooperation between international armed forces. The Supreme Headquarters Allied Expeditionary Force (SHAEF) was an international coalition and although the Allies were united against Germany, the military leadership responsible for 'Overlord' had to overcome political, cultural and personal tensions.

By 1944, over 2 million troops from over 12 countries were in Britain in preparation for the invasion. On D-Day, Allied forces consisted primarily of American, British and Canadian troops but also included Australian, Belgian, Czech, Dutch, French, Greek, New Zealand, Norwegian, Rhodesian and Polish naval, air or ground support.

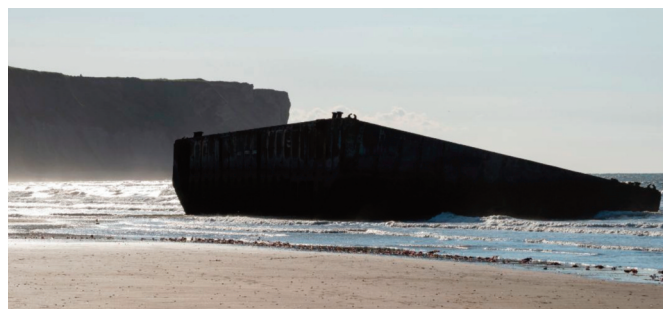
The invasions were carried out on 6th June at 6:30 am. The British and Canadian troops easily took the beaches named Juno, Gold, and Sword, and the Americans overcame opposition at Utah Beach.



American soldiers wade from Coast Guard landing craft toward the Omaha Beach against machine gun fire on D-Day. June 6, 1944, by Coast Guard photographer, Robert F. Sargent.

At Omaha Beach, however, the fortifications were stronger. American troops encountered heavy resistance, with over 2,000 soldiers losing their lives in the invasion. Thanks to the bravery of these never-forgotten troops, by the end of the day, the Allies had successfully taken over the beaches of Normandy, with more than 4,000 overall casualties, and many more wounded.

D-Day allowed the Allied troops to begin their mission to take back France, and by August 1944 Paris had been liberated. The Battle of Normandy was the event that turned the tide on the War and began the Allies' path to victory.



The remains of Mulberry Harbour in Arromanches, Normandy, France. In the days after D-Day, the Allies built a large artificial port called Mulberry Harbour, the remains of which are still visible. Image: Joel Carillet

D-Day celebrations

Every year people across the globe come together to remember and honour those who fought and those who lost their lives on D-Day.



This year, on the 80th anniversary, Portsmouth will host a major national commemorative event on 5th June 2024. Thousands of members of the public will join D-Day veterans, Armed Forces personnel, local dignitaries and VIP guests for the ceremonies taking place on Southsea Common which will be broadcast live across the UK and the world.

D-Day events in the area

The [Essex Historic Military Vehicle Association](#) have several events listed on their website:-

Chelmsford

Channels Park - D-Day event on the evening of 6th June. Refreshments, parades by local cadet forces, the reading of a tribute and the lighting of a beacon.

South Woodham Ferrers

Beacon lighting from 9.15 pm, on 6th June. Village Hall, Hullbridge Road, South Woodham Ferrers. On 8th June, there will be a D-Day event in the Town Centre of South Woodham Ferrers, Chelmsford from 1 pm to 6 pm

Heybridge Basin

Thursday 6th June - Remembrance celebration from late afternoon into the evening

RAF Bradwell Bay

Sunday 9th June - 40's Fun Day at The Green Man Inn in Bradwell Waterside.



Additionally, families and organisations will be supporting D-Day 80 by lighting a Light of Peace Lamp at 9.15pm on 6th June 2024, coinciding with the Beacons being lit throughout the United Kingdom, the Channel Islands and the Isle of Man on that night. Visit <https://www.d-day80beacons.co.uk/> for more information.

HATFIELD PEVEREL PARISH COUNCIL

LATEST NEWS - JUNE 2024



Welcome and Goodbye

We regret to say that Charley Dervish resigned from the Parish Council recently to concentrate on her work as District Councillor. Thanks go to Charley for all her work while on the Council.

On Monday 13th May, the Council co-opted Catherine Etheridge to the Council, so welcome Cathy! We still have three vacancies on the Council, so please get in touch with the Clerk if you'd like to find out more.

Section 106 Fund Allocation

The Nounsley Play Area project contract has been awarded to Kompan. Work is anticipated to begin in late August and be completed during September. Some of the much-loved pieces are remaining, but will be complemented by brand new equipment, including a zip wire!



Road Surfacing

We have been advised by Essex County Councillor Derrick Louis a that nighttime closure is in place from 15th to 20th July for the repairs to the Duke of Wellington Bridge

Party in the Park

The Parish Council's Events Committee is busy working hard behind the scenes to bring you Party in the Park on 6th July. Please get in touch if you can help, either on the day or by joining the Committee.

Village Noticeboards

If you have any community notices that you would like displayed on the Parish Council's noticeboards, please deliver them to the Parish Council office at the Village Hall where staff will arrange this. Notices that will be displayed must be of benefit or interest to the community. Commercial advertising will not be permitted, and all notices will be displayed at the discretion of the Clerk or Assistant Clerk.

Crime Concerns

Please remember you can call 101 for crime prevention advice or to report a crime that does not need an emergency response. It is very important to report crime to the Police so that they can build up a 'picture' of what

is happening in the area. Alternatively, you can report online: [Report a crime](#) | Essex Police

The Parish Council is working in partnership with Essex Police to recruit two Special Constables. If you are interested in applying to be a voluntary Police Officer for the village, please see our website for further information and the answers to frequently asked questions: <https://www.hatfieldpeverelpc.com/special-constable-recruitment/>



Planning

Planning decisions are made by Braintree District Council, following consultation with residents, the Parish Council, and other agencies where necessary. For information on what planning applications have been received, granted and refused by Braintree District Council, please see: https://www.braintree.gov.uk/info/200225/search_and_track_planning_applications/592/weekly_lists

Social Media

Please follow the Parish Council on social media for news and updates:

Facebook: @hatfieldpeverelpc

X: @HatPevPC

The Parish Council's Social Media policy can be viewed on its website:

<https://www.hatfieldpeverelpc.com/policies-and-procedures/social-media-policy/>

Don't forget you can view all Parish Council news on the website: <http://www.hatfieldpeverelpc.com>

Get involved!

The next meeting of the Parish Council will take place on Monday 3rd June 2024 in the Vic Olley Room at the Village Hall. This meeting will include the Annual Parish Council meeting, plus the ordinary May meeting. Public participation is welcome, please see the agenda which is published on the Parish Council website and on the noticeboard outside the Parish Council office.

Sarah Gaeta, Parish Clerk

parishclerk@hatfieldpeverelpc.com Carly Truman,

Assistant Clerk assistantclerk@hatfieldpeverelpc.com

Tel 01245 382865

HELLO FROM YOUR LOCAL WI!

Back in April, we welcomed speaker, Jane Malyon who gave us an insight into *Afternoon Tea Etiquette*. We learned how to hold a cup and saucer properly, how to part your scone, and even the correct way to dispose of an olive pip – and it wasn't in a napkin!

The room was split when it came to 'Scone' or 'Scon', and whether the cream came first followed by jam on top or whether it was strictly jam, then cream! But it didn't matter. It all tastes delicious no matter which way round and it was a super fun evening with forty-three lovely ladies.

Also in April, we took twenty-five ladies to Witham Public Hall to see the Witham Amateur Operatic Society perform *Calendar Girls*. What a fantastic production, and right on our doorstep too! Highly recommended.



This month we welcome speaker, Susan Widlake. From a young age, Susan has had a passion for hats. In 2018 she turned her passion into a business and makes hats at her studio, Mill House Millinery. In her fascinating presentation, Susan will talk about some of the many millinery materials that are used to

make hats, including felt, silk, leather and sinamay, a fibre similar to palm. She will explain how different styles are made and will demonstrate some equipment and techniques including making a sinamay flower. All guests are welcome at £5 per person.

Come and join us!

We are now open for new members and membership renewals, so if you're thinking about joining, why not give us a try? Membership is just £48 for the year and includes a total of 11 meetings (that's £4.36 per meeting!). Forms can be emailed or collected from any of the committee. Membership runs from April 2024 to March 2025.

Terling WI meet every fourth Thursday of the month in Terling Village Hall at 7.30pm.

Our meetings range from different speakers, crafts and activities to our annual summer party and theatre trips.

Complimentary tea and cake are served as standard at Terling WI meetings, as well as friendly faces, friendships and lots more.

For more information, contact us on terlingwi@outlook.com, or call Lucy on 07926 649669. Check us out on Facebook and Instagram [@terlingwi](https://www.instagram.com/terlingwi)

KEY DATES TERLING W.I.

THUR
27
JUNE | MONTHLY MEETING -
TALK BY SUSAN WIDLAK
OF MILL HOUSE MILLINERY

TUES
16
JULY | MONTHLY MEETING -
MEMBERS ONLY

www.facebook.com/terlingwi



LOCAL BUS NEWS!

From 2nd June 2024, a two-bus-per-hour service to Chelmsford or Witham/Colchester will be restored.

Route 371 will continue as at present. Route 71 will run from Colchester, via Stanway Sainsburys, Kelvedon, Witham, Hatfield Peverel and Boreham to Chelmsford - and vice versa.

This will only be during off-peak periods - outside these times, the service will become the X71 and run non-stop between Chelmsford Sainsburys and Witham, then to Colchester.

HATFIELD PEVEREL FOOTBALL CLUB

THOMSON DAY

SATURDAY 22ND JUNE

9.30AM – 4.00PM

**OPEN EVENT - PLEASE COME ALONG AND SUPPORT
YOUR LOCAL FOOTBALL CLUB ON WHAT IS SURE TO
BE A FUN AND ENJOYABLE DAY OUT**

**FOOTBALL
TOURNAMENTS**

**STALLS &
GAMES**

**BOUNCY
CASTLES**

DJ

**ICE CREAM
VAN**

**FREE CAR
PARKING**

BBQ

**RAFFLE
TICKETS**

**KEITH BIGDEN MEMORIAL GROUND, WICKHAM BISHOP ROAD, HATFIELD
PEVEREL, CM3 2JL**



JOIN THE FUN AT EMC

Where Every Wednesday is a Warm Welcome!

Come join us at the EMC club, a cosy gathering spot that's been bringing smiles to our village for around 15 wonderful years! The club is aimed mainly at the over 50's but don't be put off if you're younger. Whether you're young at heart or a seasoned veteran of life, everyone is welcome here.

Every Wednesday from 1pm to 3pm, we open our doors at The Village Hall to offer a warm and inviting atmosphere for folks to socialise, laugh, and make memories. Need a break from the daily grind? Come on over for a cup of coffee or tea and maybe indulge in some delicious sandwiches or special lunches – it's all covered with a small £3 charge.

Our activities range from friendly games of Bingo to light-hearted weekly quizzes – and trust us, nobody takes them too seriously! But the real magic happens in the connections we make. Whether you're seeking solace after a loss, looking to expand your social circle, or just a cosy spot to hang out with your loved one, the EMC is here for you.

And hey, if you're feeling extra generous with your time, we're always on the lookout for volunteers to join our team and bring fresh ideas to the table. Together, we can make our little corner of the world even brighter.

So why not swing by and say hello? Whether you're new to the village or a familiar face, there's always room for more friends at the EMC. We can't wait to meet you and share a laugh or two!

For more details visit www.hatpevvhall.org/emc

Mark Weale



LIVE TRADITIONAL JAZZ AT ITS BEST!

WICKHAM BISHOPS JAZZ CLUB

JAZZ SATURDAYS

3RD SATURDAY OF THE MONTH

MUSICIANS

15th June - Allan Beechey's New Orleans Jazz Bandits
 July/August - Summer Break
 21st Sept - Dave Browning's Jazz Cats
 19th Oct - Tad Newton & Friends
 16th Nov - Pete Allen's Jazz Band
 21st Dec - watch this space!

**WICKHAM BISHOPS VILLAGE HALL
 SNOWS CORNER, CM8 3JZ**

**RING PETE ON 0754 877 5777 OR EMAIL
WICKHAMBISHOPSJAZZCLUB@GMAIL.COM**

FLOWER FESTIVAL

**ST MICHAEL'S CHURCH
 WOODHAM WALTER**

"THE JOY OF FLOWERS"

**FRIDAY JULY 12TH – MONDAY 15TH JULY 2024
 10AM – 5PM**

Refreshment tent • Free Admission • Live music

SUNDAY SERVICE 10-11

ST ANDREW'S & ALL SAINTS, ULTING

PAST AND PRESENT



In the first of our “Did You Know” series, about our two beautiful ancient churches, we look at the origins of The Priory...

In The Beginning

The Priory's beginnings (of which this church formed part) trace back to a college of secular canons, established by Ingelrica in the latter part of the eleventh century, during the reign of William II (1087 – 1100).



Maud de Ingelrica, daughter of Ingelric, a prominent Saxon Nobleman in Essex, was born around 1032 in St. Martins-le-Grand, London. It's said that in her youth, she caught the eye of William, Duke of Normandy, who fathered her first child, William, in France around 1050 when she was approximately 18 years old.

After William's interest waned, Ingelrica was permitted to marry the Norman Knight, Ranulph Peverel in December 1072. Ranulph, born around 1030 in France, distinguished himself as one of the Duke's notable followers at the Battle of Hastings in 1066 and his name can be found on the roll of Battle Abbey in Sussex. He was considered to be one of the Duke's most distinguished followers at Hastings, possibly leading to his subsequent promotion and vast land grants upon William's ascension to the throne.

Records indicate that (Maud) Ingelrica and Ranulph had five children between 1060 and 1069: Pagan (Pain) (born in France) in 1060, William in 1062, Robert in 1065, Hamon (1067 – 1136), and Emma in 1069 (born in Cambridgeshire, England). Interestingly, the year of their marriage in 1072 was also the year of Ranulph Peverel's death.

The story goes that to atone for her past with the Duke, Ingelrica established a college of secular canons dedicated to St. Mary Magdalen here in Hatfield Peverel, where she lived until her death around 1100, and where she was laid to rest in the church.

During the reign of William Rufus (1087-1100), son of the Conqueror, Maud Ingelrica's first child, William Peverel, who was born in France, converted the foundation into a Priory of Benedictines, dedicated to the Virgin Mary and



affiliated with the abbey of St. Alban in Hertfordshire. William generously endowed the Priory with much land, his own residence, and accommodations for the monks' dwellings. He also pledged an annual tribute of two marks of silver to the church of St. Alban, acknowledging the Priory's subordination to the larger church.



There is a lot more fascinating history and interesting facts about our two churches which are by far the oldest buildings in our parish. Wait for the next instalment in the July edition!

Meanwhile, in other church news, we will have celebrated Pentecost and Trinity Sunday with a combined service and meal by the river at All Saints and hope to plan an outdoor service at St Andrew's in July - further details in the July edition and on the Village Hub.

Our next activities in St Andrew's church hall are our Coffee Morning on Saturday 1st June (10 am to 12 noon) and Soup and Roll charity lunch on Tuesday 11th June (12.30 pm to 2 pm) in support of the British Cross. The May Soup and Roll in aid of CHESS (do google what good works that charity carries out) raised £195. As a reminder our coffee mornings are usually on the first Saturday of the month and Soup and Roll on the second Tuesday of each month. And don't forget Edward Bear at 10 am on Thursdays in term time!

Please do feel welcome to attend our usual Sunday services - 9am at All Saints and 10.15 am at St Andrews.

Church contacts: Revd. Stephen Northfield 01245 380958 SRNorthfield@aol.com

Revd. Derek Clark - 01245 380627 / 07860235778

Charles Cope (Lay Reader) - 01245 382134

Churchwardens: John Strange - 01245 381004

johnstrange32@btinternet.com &

John Tomlins - 01245380359

johnandanna.tomlins@btopenworld.com

Parish of St Andrew Hatfield Peverel with All Saints Ulting		
SERVICES etc. for JUNE 2024		
	St Andrews (+refreshments after 10.15 services)	All Saints (+refreshments after service on 4 th Sunday)
Saturday 1 st June	10 -12 noon COFFEE MORNING in St Andrew's Church Hall	
Sunday 2 nd	10.15am Mattins (Morning Prayer with hymns)	9am Holy Communion (BCP)
Sunday 9 th	8am Holy Communion 10.15 All Age Service	9am Morning Prayer (Common worship)
Tuesday 11 th	SOUP and ROLLS in St Andrew's Church Hall 12.30- 2pm <i>(In aid of British Red Cross)</i>	
Sunday 16 th	10.15 Parish Eucharist	9am Holy Communion (BCP)
Sunday 23 rd	10.15 Parish Eucharist	9a.m. Parish Eucharist Refreshments after service
Sunday 30 th	10.15 Parish Eucharist	9a.m. Holy Communion

Edward Bear: Every Thursday 10am to 11.30 (in term time)– Coffee and Company – in hall - with short worship on alternating weeks
Churches open for prayer every Wednesday: All Saints at 9am [with Morning Office], St Andrew's at 12 noon

Rev'd Stephen Northfield 01245 380958
 Rev'd Derek Clark 01245380627 07860235778
 John Strange 01245381004 John Tomlins 01245380359


 Come and enjoy activities, puzzles, games and storytime with your child
 

EVERY THURSDAY 10 AM - 11.30AM

EDWARD BEAR CLUB

St Andrew's Church & Church Hall

£2 per family



 More information
 

HATFIELD PEVEREL WALKERS

Small Steps, Big Impact

Come and explore with us on our monthly walks



We are a small group of villagers who gather on the last Thursday of every month for a 3 to 4-hour walk around the local area. Sometimes, we use cars to venture further afield, such as Terling, Wickham Bishops, Maldon, and Heybridge, to start and end our walks.

Typically, our walks cover a distance of 4-5 miles at a reasonable pace, with occasional scheduled refreshment stops, particularly during the summer months.

There are no subscription fees or membership requirements; everything is free of charge. Recent walks have included visits to Toppinghoe Hall Woods for the annual bluebell display, Little Braxted, Wickham Bishops, Papermill Lock, and various other local and more distant areas.

Our upcoming walks will take place on Thursdays of May 30th and June 27th, meeting outside the Village Hall near the recycling site at 10 a.m.

New members who are interested in exploring the local area are especially welcome to join us, but please note that dogs are not allowed.

For more information, please contact Graham Bushby at 07484 864712.

SIDNEY HOUSE & THE LAURELS SURGERY

CHANGES TO OUR SERVICES

From Monday 17th June 2024, patients will no longer be able to request medication by emailing our dispensary. Our dispensary email account will be closed.

So, here's how you can order your medication: -

- via the NHS App,
- through online services (SystmOnline) on computer or laptop,
- or by returning the repeat prescription slip.

Why these changes?

- An email does not go directly into your patient record, whereas requesting medication using NHS online tools does. This is much safer as it reduces the chance of errors or things being missed.
- Emails take considerably longer for our dispensers to process, which means it takes longer to get everyone's medicines ready on time.
- Not all patients give us vital information in an email to safely process the request – some patients don't even tell us their name! Requesting prescriptions online guarantees we know which patient is asking for what medicine.
- Some patients try to use the dispensary email as a 'short-cut' to requesting an appointment which is unfair on other patients.

Try the NHS app

There is a major focus across the NHS to use digital (online) methods for patients to access healthcare and health-related information. The NHS App is the main method we would like to promote as it can save you, and us, time by reducing the number of phone calls we receive at the surgery.



What are benefits to using the NHS App

- Order repeat prescriptions, any time of the day or night.
- Choose which pharmacy you want to collect your medicines from – including selecting local chemists whenever you're away on holiday in the UK.
- Manage and check your appointments.
- Send us an eConsult to request an appointment.
- Look up your test results – don't worry, we will still contact you if we need to speak to you about the results!
- View letters and referrals.
- Look up NHS services and get advice through 111-online

What do I do if I don't have a smartphone or tablet?

Don't worry; we have planned for this:

You can still hand in or post the repeat-slip which is included in the bag with your medicines. Just tick which medications on the list you need.

You can still use SystmOnline (online services) from your home computer or laptop – our reception team can help you get set up if you need it.

You can nominate a trusted family member, friend or neighbour – we can give them access to the part of your medical record for requesting repeat medications (they will not see any of your private medical information, only the medications).

The NHS App can be used on Android and Apple devices and is available to download through your app store or Google Play store.

If you are still unsure or worried about setting up the NHS App – come in to see us and we will help you!
Or visit our website

www.sidneyhouseandthelaurels.nhs.uk



Do more with the NHS App!



- 🔗 Order repeat prescriptions
- 📞 Use NHS 111 online
- 📍 Find NHS services
- 👁️ View your GP health record
- 📅 Book appointments
- ✉️ Get reminders and messages

And much more...

Need help?

Get support in the app or visit nhs.uk/helpmeapp



Apple, the Apple logo, iPhone, and iPad are trademarks of Apple Inc., registered in the U.S. and other countries and regions. App Store is a service mark of Apple Inc. Google Play and the Google Play logo are trademarks of Google LLC.

PEVEREL WINE CLUB NEWS

OFF THE BEATEN TRACK!



Our well-attended May meeting was entitled *Off the Beaten Track*, trying out some more unusual grape varieties and exploring the reasons why they may be less well-known. Everyone arrived wearing virtual hiking boots and haversacks, prepared for (almost) anything they might encounter in their trek off the beaten track. What they weren't expecting was a blind tasting, accompanied by clue sheets to help them identify what the wines were, and where they came from. Some wines were easier than others to locate, with massive clues like pictures of kangaroos raiding a vineyard and lava flows on Mount Etna as helpful markers along the way.



The competition was very keenly fought, with a mere 5 points separating those in first and last place, but the eventual worthy winners were the team comprising Jill Shakespear, David Wickenden, Pat Hercules and Ali and Rod Pudney. All the wines were interesting, covering unusual grape varieties such as Treixadura, Gros and Petit Manseng, Turbiano, Nerello Mascalese, Petit Verdot and Durif. Our favourite white wine was a delicious Villa Flora Lugana DOC from Waitrose at £13.99, and a blockbuster Durif and Shiraz blend called Dark Corner from Laithwaite's at £12.99 was the runaway winner in the reds.



We also found out plenty of useless information about where Fray Bentos corned beef now comes from (Scotland) and that there is a fountain on the Camino de Santiago in Spain which dispenses free wine to pilgrims!



We are now looking forward to June's meeting, the first of our Out & About sessions away from the village hall during the summer months. We shall be taking a guided tour around the old Moot Hall on Maldon High Street, in the confident belief that the view from the top will be worth the climb up 3 flights of spiral stairs! After this, we shall be descending on Café Brazil a little bit further up the High Street to sample the delights of South American food and drink.

If you'd like to join us for June's meeting - or indeed any other meeting - for a light-hearted and inexpensive evening out, you would always be very welcome. Please give Vee a ring beforehand on 01245 355723 however, to ensure there is enough food and drink for all. (We normally meet on the second Wednesday of each month but with some exceptions). Our website is currently being reviewed, but I can happily send a copy of the exciting 2024 programme if you email me at peverelwineclub@hotmail.co.uk. Vee Green, Secretary (01245 355723)

Hatfield Peverel Party in the Park

Free Entry!

An annual family fun event held in Hatfield Peverel for the community by the community.



2024

Music from

The Allykats
Blackwater
Dr. Zero & the
Hotheads
Focus

Saturday, July 6th. 1-10pm

Lots to do, including :

Food, Drink, Ice cream stalls

Community group stalls

Classic Cars display

Hot Steps Dance display

Inflatables

Raffle

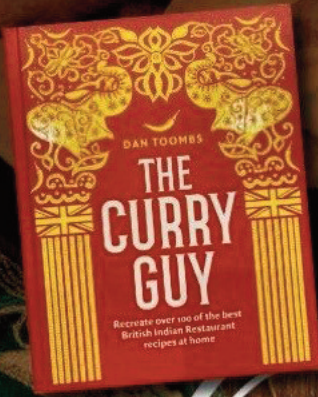
Essex Amusements

HP Scouts Tomahawks

Organised by volunteers from the community with sponsorship and help from : Hatfield Peverel Parish Council; our generous sponsors.

Strutt Memorial Recreation Ground
Maldon Road, Hatfield Peverel

Purveyors of Fine Indian Cuisine



Dan Toombs
THE CURRY GUY
"This recipe was inspired by a visit to Omar's, a small curry house in Hatfield Peverel. It may be small but the curries I enjoyed there are right up there with the best!"

Omar's

OF HATFIELD PEVEREL

15% DISCOUNT

On collection orders minimum spend £20

Banquet Night

Every Monday & Tuesday

(Except bank Holidays)

**Bring Your Own
Alcohol**

(No corkage charge)

**CELEBRATING OUR
25th ANNIVERSARY**



01245 380 099 / 01245 381 125

www.omartandoori.co.uk

Email: omars_hatfieldpeverel@hotmail.com

The Street, Hatfield Peverel, Chelmsford, Essex CM3 2EA



Wildlife Champion Update



MEADOW MANAGEMENT PAYS OFF!

On 26th April, Jackie, Pat, Keith, Ted and I spent some time at the Duck Pond at the Strutt Memorial Recreation Ground clearing nettles from the path edges and planting primroses that Jackie kindly donated from her garden. We then ventured across to Stonepath Meadow to weed between the new hedging whips to allow them space to grow. Thank you to all and sorry I forgot to take any pictures!



Our session on 11th May was cancelled to allow volunteers to attend the Hatfield Peverel & Ulting Horticultural Society's Plant Sale but we made up for it on other days!

We continue to weed between the hedging whips in Stonepath

Meadow, Nounsley Play Area and the Recreation Ground but this is a huge amount of work now that we have so many whips! Thanks to everyone who has helped with this – Pat and Lesley who joined me at Stonepath Meadow on 2nd May and Diane who has helped in Stonepath Meadow and the Recreation Ground in her spare time. I have also been out in

Stonepath Meadow and am planning to tackle Nounsley Play Area with my Mum before May is out!

An exciting piece of news! I spotted an orchid in Stonepath Meadow! I'm not quite sure if it's an early purple or a green winged but it's definitely an orchid! Hopefully this shows that our management of the meadows to encourage wildflowers is working and we will see more different species over the coming months and years!



We would really welcome more help if anyone else would like to join us! No previous experience necessary! We meet regularly from 9-11am on the second Saturday and the fourth Friday of each month.

Forthcoming sessions will take place on Saturday 8th and Friday 28th June 9-11am. Please get in touch if you would like to join us!

Donna Goddard, Urban Wildlife Champion, Hatfield Peverel. Tel: 07789 175333

wildlife-champion@hatfieldpeverelpc.com

SHEA-LOWE

EDUCATION

UNLOCKING POTENTIAL TOGETHER

www.shealoweeducation.co.uk

07754167335

@shealoweeducation

facebook.com/SheaLoweEducation

**Primary school aged – MATHS AND ENGLISH TUTORING,
11+PREPARATION AND MOCKS**

Small group sessions at Hatfield Peverel Village Hall and 1:1 available in Hatfield Peverel

HADFELDA (LADIES GROUP)

TALENT ON DISPLAY

It never ceases to amaze me just how many talented people there are in our area.

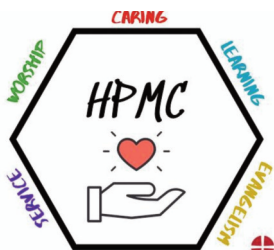
Three such ladies were the speakers at our April meeting. Elaine, Sally and Jean are members of Dolphin WI in Braintree and, together with a few friends, have spent years knitting replicas of the main buildings in the Braintree area. The results were amazing!

The photo shows just a few of the buildings they have knitted, together with some little market stalls where the attention to detail is incredible.

Many of the models now reside in the buildings they represent (St. Michael's Church, St. Peter's Church, George Yard and Braintree Museum to name just a few) The ladies have also produced a leaflet entitled **'Braintree Knitted Heritage Trail'** which guides visitors around the various buildings where the replicas can be viewed. Well worth a visit!

Our next meeting is on 26th June when we will be entertained by Dot Reed, another very talented lady. Dot will be bringing some of her beautiful 'dolls' to show us and explain how she made them.

We charge £5 for visitors but our annual membership is only £25 - a real bargain! We meet in St. Andrew's Church Hall at 2 pm on the fourth Wednesday of the month and you can be sure of a warm welcome! If you'd like to know more, please call Marel on 01245 380827



Hatfield Peverel Methodist Church

HATFIELD PEVEREL METHODIST CHURCH

COMMUNITY CONNECTIONS

During our weekly services we have followed the Easter celebrations with an exploration of the words of Jesus to his disciples when he appeared to them after his resurrection. As Christians we are reminded of the importance of sharing our faith and the good news of Jesus.

Two of our members (Eddie and Jane) were inspired during a visit to the Christian event Spring Harvest in 2023. We learnt about a programme called Myriad which supports and encourages those who want to find new ways to connect with neighbours and help them in any way they can. These are exciting times for us as we find opportunities to meet and get to know others. We regularly pray for those in our community. If you would like us to pray for you, please let us know your concerns on hatfield.peverel@chelmsfordcircuit.co.uk.

We are delighted that Rev Barry and Ria have been able to recommence their lunch club for children at St Andrews Junior School. John also works regularly with children at the school – here is the willow weaving which they helped with.

Do join us any Sunday morning from 09.15 am in Room 3 of the Village Hall (access through the Coffee Lounge).

You can contact us as follows - Minister: Barry Allen 01621 853423

Mission Lead: Jane Cook 07827 594535

Church email for information and prayer requests:
hatfield.peverel@chelmsfordcircuit.co.uk.

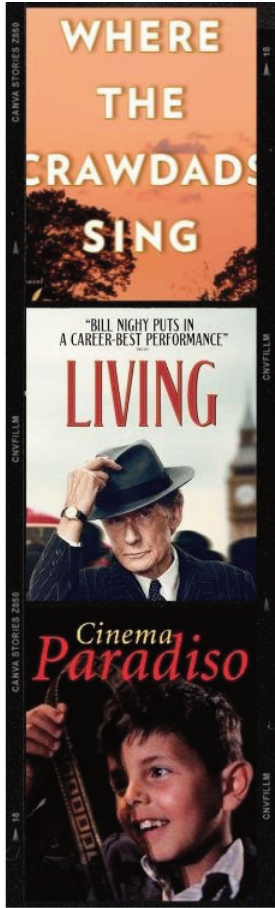




MALDON FILM CLUB

THE END OF ANOTHER SUCCESSFUL SEASON!

Maldon Film Club continues to go from strength to strength and its successful 19th season finished in May 2024 with the screening of *Official Competition* and *Living*.



Of the 19 films screened in 2023/24 a significant majority received an approval rating in excess of 70% with two, *Cinema Paradiso* and *Where The Crawdads Sing*, topping the 90% mark. Additionally, three of the films - *A Man Called Otto*, *Lunana-A Yak in the Classroom* and *Mrs Harris Goes to Paris* - scored more than 85%.

We are preparing already for the new season which begins on Tuesday 10th September 2024 and continues until Wednesday 28th May 2025. The programme for the 2024/25 season, which is heavily influenced by the members' votes, will, as always, cover a wide variety of themes with films from different regions of the world. Many of the 19 films to be screened have received Oscar awards and/or nominations and, as usual, the programme will offer something for everybody. Watch this space for further details of our 2024/25 season, including a full list of the films to be screened, which will appear in next month's edition.

The Club, formed in 2005, meets at Maldon Town Hall on a Tuesday evening (September to December) and then on a Wednesday from January until the end of the season. Doors open at 7.15pm, wine and soft drinks are available, at a charge, from 7.30pm and unless otherwise stated, the films commence at 8.00pm.

Currently, there are some 170 members and the price of next season's annual subscription will be just £30 which entitles members to free admission to all of the season's 19 films - that's less than £1.60 per film! In addition, there are a limited number of places for junior members aged 16-18 in full-time education and training at the reduced cost of £20 and members' guests pay just £4. As a member, you will be asked to give your reaction to the films you have seen and also help the committee compile the programme for the following season. Membership is open to all and new members will be made very welcome.

For further details please check out the website www.maldonfilmclub.uk, visit the Maldon Visitor Information Centre (Tuesday – Saturday 1100-1600) or phone 01621 869340 for membership enquiries. If you have any further questions please do not hesitate to contact me, John Salisbury, on 07905 971608.

In loving memory...

of Leonard "Roy" Ppear
8th Feb 1936 - 5th May 2024

Forever in our hearts.

An active member of the village since 1960, Leonard was Quarter Master at the Scout group for over 50 years. He was regularly seen cooking burgers at the village fair and collecting newspapers for the group to raise money. He was an active player in the football team in the Sixties and was a member of the wine guild. A loving Husband, Father, Brother, Grandad and Great Grandad, he will be sadly missed.



Any donations to Dementia UK can be made to
<https://leonardroypear.muchloved.com/>



Helen Rollason
Cancer Charity

UPCOMING Events



Saturday, 10:00 am-12:00 pm
Coffee Morning
at our centre in Hatfield Peverel

Jun
15
2024



Sunday All day
A Vintage Day Out
at Cressing Temple Barns - live entertainment, classic vehicles, food, music, jive dancing, shopping and much more!

July
14
2024



Sunday All day
Marvellous Vintage
at Layer Marney - vintage stalls, exquisite classic vehicles, pre-loved furniture and items, antiques, collectibles and much more!

Aug
25
2024

www.helenrollason.org.uk

St Andrew's Junior School



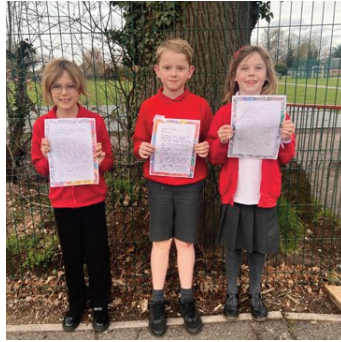
EXPLORING HISTORY & CREATIVITY

Since our last update in March, we have added a new addition to our ever-improving temporary school site – a school hall! This has been an exciting development enabling Collective Worship, hot school meals and indoor PE to, once again, be part of our normal school life.



The Art of Letter Writing for Year 3

As part of *Letters To The Elderly Day* on Monday, Year 3 has been working hard on writing letters to the residents at our local care home, Hatfield Peverel Lodge. The children have enjoyed writing their letters and decorating them beautifully. Their teacher, Mrs O'Connor, posted them and the children eagerly await some responses!



Roman Day for Year 4

Year 4 enjoyed an immersive 'Roman Day' run by 'Lulius Marcellinus,' a Roman legionary at the end of February.

The day began with Lulius setting up a tent and campfire. He asked the children whether they thought they'd like to have lived in Roman times and the answer was a resounding 'yes!'. He told them about the day in the life of a Roman soldier: how many miles they marched every day, what they ate and some of the camp jobs they had to do every day. The children had turns at some camp jobs: grinding corn, cleaning armour and 'washing' using olive oil and scrapers on their arms!



The children also had a go at writing on wax tablets and were introduced to some Roman board games that would have been played in any spare time the soldiers had. By now, it was pouring rain, but that didn't dampen the children's enthusiasm!

In the hall, the afternoon began with a taste of Roman

food: 'hardtrack' bread (rock hard and very dry!) and a 2000-year-old lentil stew recipe (very tasteless!). They handled real Roman artefacts and worked out what they were. Then the children were taught how to march in formation, including the 'tortoise' manoeuvre for defence.

Viking Day for Year 5

The children and staff in Year 5 enjoyed a fantastic Viking Day run by 'Lord Ulf' from 'History Off The Page'. They all dressed up as Vikings and looked very authentic in their costumes.



The children made Viking necklaces and bracelets, crushed acorns into powder to add water and mixed it to form a black ink. They then got a quill and wrote their names.

They then went on to play Hnefatafl which is a Viking chess game – one side Danes, the other, Anglo-Saxons (it was easier to win as a Dane apparently!).

They did some shield training outside and made walls with their shields. They had a fun time as they had to charge at Lord Ulf!

Wizarding Fun for Year 6



Year 6 had a wonderfully, wizardly adventure at the Warner Bros Studio Tour – home to the Harry Potter Studios. The day began with an eye-opening workshop called 'Distressed Art'. They got to see some of the real costumes from the blockbuster films and learnt

about the wardrobe department and the important job of distressing. Next, the children explored the different sets and experienced the bustle of Diagon Alley, the magnificence of Gringotts Bank and the screeching Mandrake greenhouse. It was a fabulous day and the St. Andrew's family shone very brightly.

Thank you for your patience and support as the many site changes have been undertaken. We all very much appreciate your understanding during what has been such a challenging time.

We all look forward to some brighter, sunny days ahead!

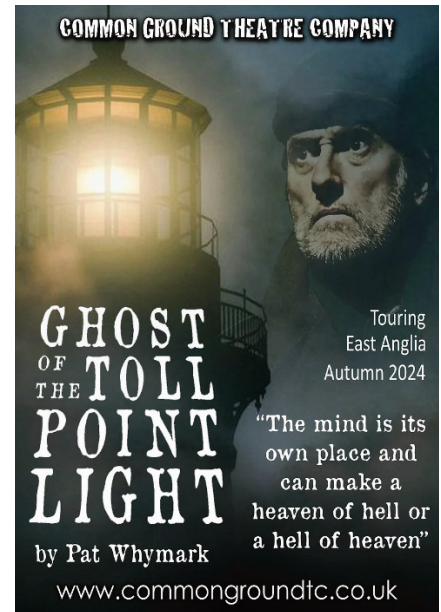
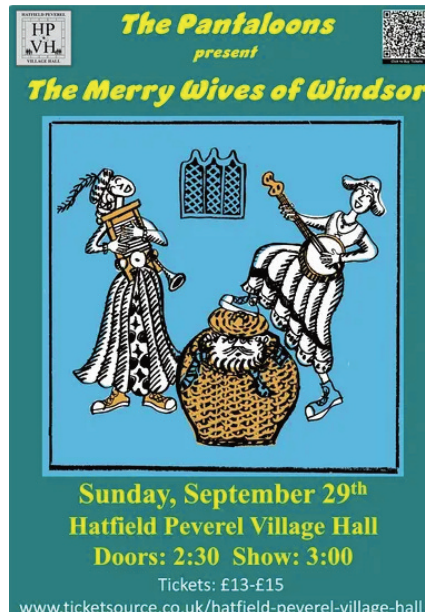
Becky Black – Headteacher

What's on at Hatfield Peverel Village Hall?



Mailing List

We have a great series of great theatre shows coming up at the hall in the next few months. The Pantaloons return on Sunday, 9th June for a matinee performance of Oscar Wilde's classic "The Importance of being Earnest". They will also be performing Shakespeare's "The Merry Wives of Windsor" on Sunday, 29th September.



Also returning are the Common Ground Theatre Company with "The Ghost of the Toll Point Light" on Sunday, 3rd November. Tickets for Brentwood Mac in July have sold out, but we have other amazing artists coming to the hall including Queenage and Dan Hadfield as Gary Barlow. Get your tickets as soon as they go on sale as these are also likely to sell out.

Tickets for music and theatre at the hall are available from <http://tinyurl.com/HPVH-Tickets>. For all events at the hall, go to the events page on our website at www.hatpevvhall.org

We have a fantastic range of activities and clubs for children, including **Hot Steps** dance; **Kazen Kai Karate**; **Tuesday Toddler Time**; **Little City**; **Nee Naw** children's parties, **Allstar Majorettes** and **Trainmaster**. To see all clubs running from the hall, go to our clubs page at <https://hatpevvhall.org/clubs-at-hpvh> and get the contact information there to join in.

Stay in touch by signing up to our mailing list (click the link on the website home page or scan the QR code). All details on our website (www.HatPevVHall.org), on the village hall noticeboards and on Facebook at www.facebook.com/hatfieldpeverelvillagehall or call the Box office & room bookings number on **0300 102 0473**

Stitch to Enrich

Come and make friends
as we chat, stitch and relax

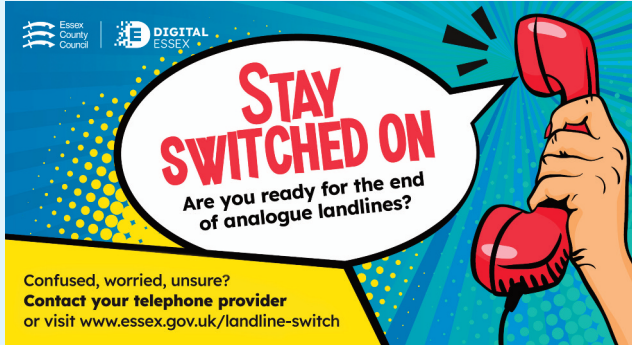
1st and 3rd Thursdays each month
2pm – 4pm

The Coffee Lounge
Hatfield Peverel Village Hall
Maldon Road, CM3 2HP

We share the joy of stitching and friendship.
A warm welcome awaits you....

For more information, please contact
Jane Cook 07827 594535
or Stitch2enrich@gmail.com

ARE YOU READY FOR THE END OF ANALOGUE LANDLINES?



Essex County Council's Digital Essex team wants to make residents in Hatfield Peverel aware that changes are coming to analogue landlines.

By 2025, traditional phone lines will be replaced by a digital landline service. This means that calls will be made over a broadband line.

For most residents, this change will be straightforward – you'll also get to keep your phone number. Your telephone provider will contact you before anything changes. It is important to respond and discuss what you need to do to ensure your service won't be affected.

The switch to digital landline services could affect some residents. If any of the following apply to you, or someone you know, make sure you contact your telephone provider:

- You don't have broadband
- You rely solely on a landline
- You use a personal alarm or healthcare device
- You live in an area with poor mobile signal
- You have additional needs

If you're confused, worried, unsure, or have any questions, call your telephone provider.

Visit us at an event near you! Digital Essex will be attending events across Essex this Spring and Summer, where we'll be sharing the latest information about changes to phone lines.

We are planning to attend the Braintree Street Market event on the 29th of June. This is subject to change so please see the full list of events at www.superfastessex.org/landline-switch-events.

BT is also visiting locations across Essex throughout May. For full details, visit their website at www.bt.com/broadband/digital-voice/events.

If you'd like to read more about the switch to digital landlines, visit Essex County Council's website: www.essex.gov.uk/landline-switch



Have you visited the Coffee Lounge?

Open Monday - Saturday, 9am-4pm
and Sundays 10am-4pm

Serving hot food, breakfasts and lunch
Eat-in and Take-away

COFFEE CLUB
Thursdays 9-11am

All welcome for a chat and a cuppa!



HATFIELD PEVEREL VILLAGE VOICE

ADVERTISE WITH US!

Get your business seen by the
residents of Hatfield Peverel
and surrounding areas

INTRODUCTORY OFFER

FULL PAGE (A4) - £30+VAT

HALF PAGE (A5) - £15+VAT

QUARTER PAGE (A6) - £8+VAT

10% discount for 3 months or more

For more details email our
Communications Officer, Janice on
communications@hatfieldpeverelpc.com

HELEN ROLLASON CANCER CHARITY

VINTAGE FUN FOR CHARITY

Helen Rollason
Cancer Charity

Our fundraising team are busy planning two amazing vintage events for this summer. On Sunday 14 July we have 'A Vintage Day Out' at Cressing Temple Barns. This has been a popular event over the past few years and is a fun day out for everyone. On Sunday 25 August we have 'Marvellous Vintage' at Layer Marney Towers. We are very



excited about this lovely new venue. There will be food, drinks, ice creams, vintage cars, and stalls selling lovely vintage items and crafts. To keep you entertained we will have live music and dancing throughout the day. Come along with your family or friends. Feel free to dress 'vintage' and bring your picnic chairs to sit on the lawn and enjoy the entertainment.

More details and tickets for both events can be found at www.helenrollason.org.uk/find-an-event/



At the end of April, the Rotary Club of Billericay and Mayflower organised a car rally finishing at Hatfield Place. We provided tea, coffee and cakes (made by our volunteers) and raised over £1,000 for the charity. Thank you to everyone involved and to Hatfield Place for inviting us to provide the refreshments.

By the time you are reading this, we will have held our 'Ride For Helen' cycle event at The Crix and the Hatfield Peverel Open Gardens (fingers crossed for the weather!). More on these two events next month.

We want to say a big thank you to the Justin Edinburgh Foundation for the generous donation of a defibrillator. This will be kept in our Hatfield Peverel centre for the

benefit of our clients and the local community (during our centre's opening hours), and it will be taken to our events.

If you are looking for a challenge, we have 5 places available for the 'sold out' London Asics 10K run on 14th July. If you prefer something more sedate, how about organising a 'Tea for Helen' for your family or friends or a quiz night to raise funds for us? Give us a call on 01245 380719 for ideas.

If you would like to meet some of our team, come along to 'Volfest' in Chelmsford High Street on 6th June for a day of feelgood activities with around 50 local organisations.



How you can help

We're looking for volunteers to help with our events. If you would like to get involved, please contact our Fundraising Team on 01245 380719 or email us at fundraising@helenrollason.org.uk. It's a great way to meet people while doing something worthwhile for a good cause.

If you would like to know more about the services we provide, you can call us on 01245 382888 or come and talk to the support team in our centre on The Street, Hatfield Peverel.

Dates of upcoming Helen Rollason Cancer Charity events:

08 June – Donation Day. Drop off your pre-loved items at our centre on The Street, Hatfield Peverel between 9am and 12pm.

15 June - 10am – 12pm. Coffee morning at our centre in Hatfield Peverel.

14 July – A Vintage Day Out at Cressing Temple Barns

25 August – Marvellous Vintage at Layer Marney Towers

22 September – Rural Ramble and Trail Run at Hatfield Place

24 November – Christmas Gift Fair at Chelmsford City Racecourse

HATFIELD PEVEREL PARISH COUNCIL

KEEP UP TO DATE WITH ALL THE PARISH COUNCIL AND VILLAGE NEWS & EVENTS



SCAN FOR WEBSITE

FOLLOW OUR PAGES ON SOCIAL MEDIA

SCAN THE CODES BELOW
FOR X AND FACEBOOK



@HatPevPC



@hatfieldpeverelpc



 Clubs & Activities at the Village Hall 			
Badminton Mondays 7pm 	HotSteps Mondays 3:30pm Wednesdays 5:30pm 	EMC Lunch club Wednesdays 1-3pm 	Table Tennis Tuesdays 7:30pm  (Sep-Apr)
Tuesday Toddler Time Tuesdays 9:30am 	NeeNaw Monthly, Wednesdays 	Train Master Monthly - Thursdays 	Little City 3rd Wednesday of the month 9:30am 
Kazen Kai Karate Thursdays 3:45 	Everybody Move Bootcamp Wednesdays, 6:30-7:30 	Methodist Church Sundays 9:15am 	Dancematic Latin Dance Fridays 2pm 
Shining Stars Childcare Weekdays 7am-6pm 	Dog Star Dog Training Thursdays 6pm 	Caledonian Soc Wednesdays, 7:30 	Stitch to Enrich 1st and 3rd Thursday 2-4pm 
Flower Club 1st Weds of the month 7:30pm 	Bingo 1st & 3rd Friday of the month: 7 - 10pm 	Essex Tai Chi Academy Saturdays 9:30-12:30 	Wine Club 2nd Weds of the month 7:30pm 

For club information, go to the Clubs page on our Website.
www.HatPevVhall.org
 Tel: 0300 104 0473
 Email: Enquiries@HatPevVhall.org



Calling all vegetable growers!

SOUTHERN BRANCH
ESSEX DISTRICT ASSOCIATION

MINI SHOW

Sunday 14th July,
2.00pm Main Hall,
Hatfield Peverel Village Hall, CM3 2HP

**ENTRIES DUE BY THURSDAY
11th JULY 2024, OR ON DAY**

Judges: TBC
 Staging from 11.00am,
 Judging starts at 12.00pm.
 Members and non-members welcome.
 Light refreshments available

For more information and to
 see how to enter, email
emily.plumb@btinternet.com