



A12 Chelmsford to A120 Widening  
Project Team  
National Highways  
Woodlands  
Manton Lane  
Bedford  
MK41 7LW

0300 123 5000

14th February 2023

## **A12 Chelmsford to A120 Widening Scheme – Construction site compound planning application**

Dear Resident,

As you may be aware, we are proposing to make changes to the A12 road between junction 19 (Chelmsford) and junction 25 (A120 interchange). This A12 Chelmsford to A120 Widening Scheme is currently in the examination stage of its Development Consent Order (DCO) application to the Planning Inspectorate under the Planning Act 2008. You can read more about our proposed changes to this stretch of road at [www.nationalhighways.co.uk/A12](http://www.nationalhighways.co.uk/A12).

We are also in the process of applying for planning permission from Braintree District Council under the Town and Country Planning Act 1990 to build the first part of a construction compound near junction 20b of the A12, as part of our early preparation for the road construction. This application will be submitted in late March 2023.

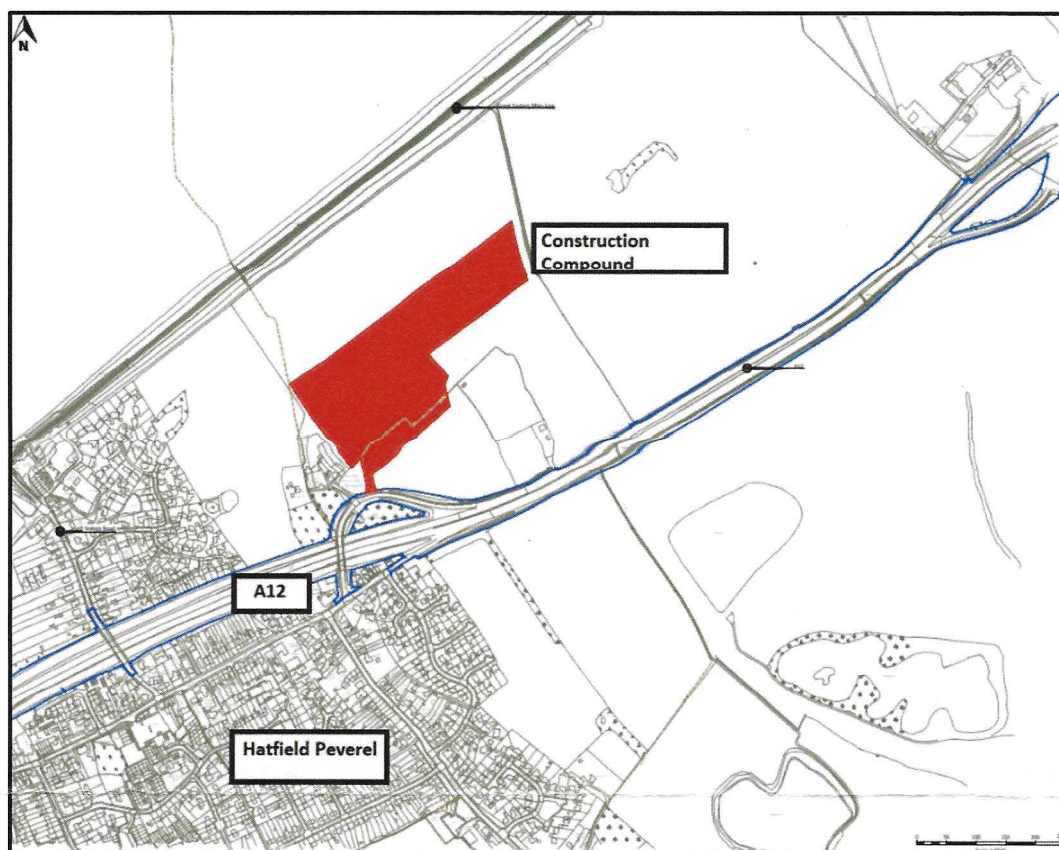
Although this construction site compound proposal is also in the DCO application, this letter is to advise you about the construction site compound application which is being submitted to Braintree District Council. We have sent you this letter as your property is near the proposed location of the compound.

### **What we are doing**

Subject to approval from Braintree District Council, we intend to build the first part of the main construction compound near junction 20b of the A12 in September 2023.

We are proposing to build the compound on land to the north-east of Hatfield Peverel. It would include an access road, staff parking spaces, a storage yard, welfare and office

cabins. Earth banks will be constructed to screen the compound from neighbouring properties, the public right of way and surrounding roads.



*Figure 1- Location plan for compound*

The compound will be temporary. If the A12 Chelmsford to A120 Widening Scheme DCO is not granted, the land will be put back to its former use. Likewise, once the A12 Chelmsford to A120 Widening Scheme work has been completed, the land will be put back to its former use.

### **Why we are doing this work**

Building the construction compound early means that we will be able to start making our changes to the A12 road more quickly if the DCO application is approved. This means that the benefits of improved safety and reduced congestion on the A12 between junctions 19 to 25 will be achieved faster. However, the changes to the A12 road will not start until its DCO is granted.

### **Next steps**

If the planning application for the construction site compound is approved, we will write to you again to keep you informed of when that construction will start and provide further information on what to expect during the construction of the compound.

**Questions on the compound planning application**

If you have any questions about this compound planning application, please contact the project team by emailing [A12ChelmsfordA120wide@nationalhighways.co.uk](mailto:A12ChelmsfordA120wide@nationalhighways.co.uk) or phone 0300 123 5000.

Yours faithfully,



**Kamandila Kaluba**

Senior Project Manager – A12 Chelmsford to A120 widening scheme