

HATFIELD PEVEREL

VILLAGE VOICE



CONTENTS

Parish update	3
Christmas in the Park	4
St Andrew's and All Saints	5
Hadfelda Walkers	6
Hatfield Peverel Methodist Church	7
Hatfield Peverel Allotment Association	8
H.P. Horticultural Society	9
The Western Front Association, Essex Branch	10
Terling WI	11
Peverel Wine Club	13
Maldon Film Club	14
Hadfelda Ladies Group	15
Stefan Tabacu, My Personal Trainer	16
Joshua Reilly-Hurter Dog Walker Essex	17
Hatfield Peverel Football Club	28
Village Hall News	19
Coming soon to HPVH	20

USEFUL INFORMATION

Click below for Parish Council and village information and contacts

[Hatfield Peverel Parish Council](https://www.hatfieldpeverelpc.com/parish-council/) *

[Parish Council Meetings](https://www.hatfieldpeverelpc.com/parish-council-meetings/) *

[Clubs and Societies](https://www.hatfieldpeverelpc.com/welcome-to-our-village/village-culture/clubs-and-societies/) *

[Local Information and Contacts](https://www.hatfieldpeverelpc.com/welcome-to-our-village/community-matters/local-information-and-contacts/) *

Credits: Editor: Janice Fitzpatrick
communications@hatfieldpeverelpc.com

Publisher: Andrew Smith Print Ltd
andrew@asmithprint.co.uk

The DEADLINE for JANUARY 2025 issue of Village Voice is 14th DECEMBER 2024. (Any copy received after this date may not appear in the January issue)

For information on copy specifications email:
communications@hatfieldpeverelpc.com
 If you wish to advertise your business in Village Voice, please get in touch for a media pack and rate card.

This publication is printed on FSC-sourced paper and is fully recyclable.

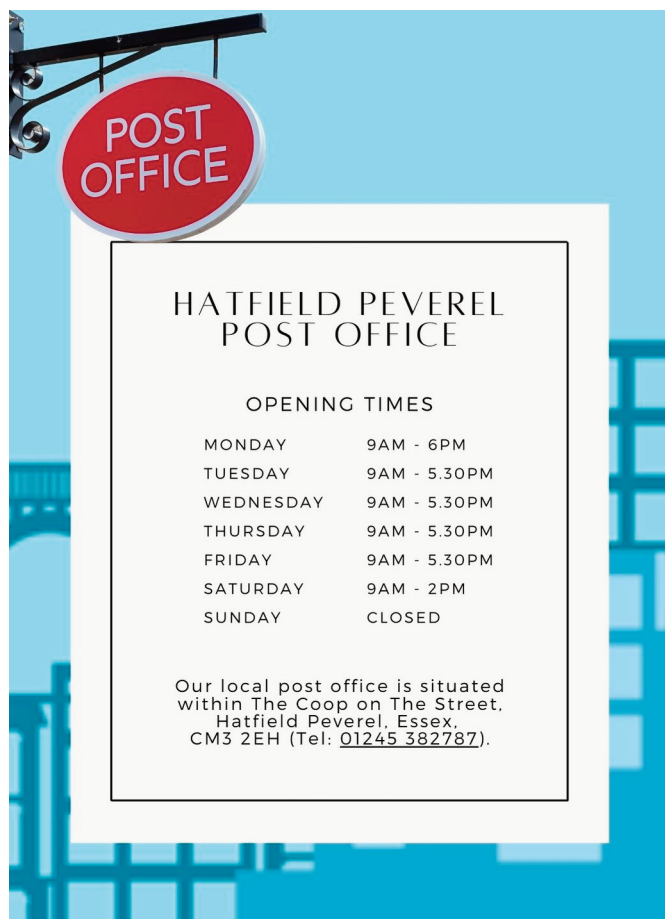
* [Hatfield Peverel Parish Council](https://www.hatfieldpeverelpc.com/parish-council/) – <https://www.hatfieldpeverelpc.com/parish-council/>

* [Parish Council Meetings](https://www.hatfieldpeverelpc.com/parish-council-meetings/) – <https://www.hatfieldpeverelpc.com/parish-council-meetings/>

* [Clubs and Societies](https://www.hatfieldpeverelpc.com/welcome-to-our-village/village-culture/clubs-and-societies/) – <https://www.hatfieldpeverelpc.com/welcome-to-our-village/village-culture/clubs-and-societies/>

* [Local Information and Contacts](https://www.hatfieldpeverelpc.com/welcome-to-our-village/community-matters/local-information-and-contacts/) – <https://www.hatfieldpeverelpc.com/welcome-to-our-village/community-matters/local-information-and-contacts/>

Front cover: Cllr Mark Weale's puppy, Daisy, groomed and photographed by Hannah at <https://www.poochesgrooming.co.uk/>



HATFIELD PEVEREL POST OFFICE

OPENING TIMES

MONDAY	9AM - 6PM
TUESDAY	9AM - 5.30PM
WEDNESDAY	9AM - 5.30PM
THURSDAY	9AM - 5.30PM
FRIDAY	9AM - 5.30PM
SATURDAY	9AM - 2PM
SUNDAY	CLOSED

Our local post office is situated within The Coop on The Street, Hatfield Peverel, Essex, CM3 2EH (Tel: 01245 382787).



YOU ARE INVITED TO

CHRISTMAS

in the Park

MUSIC . FOOD . DRINK

SUN 8 DEC | FREE ENTRY | 1-6 PM

Hatfield Peverel Village Hall

HATFIELD PEVEREL PARISH COUNCIL

PARISH UPDATE

We're pleased to announce that the Parish Council has recently installed three new solar-powered lighting columns along the pathway at Strutt Memorial Recreation Ground, near the school entrance. This improvement comes in response to a request from the school, which highlighted the need for additional lighting during the darker months to ensure the safety and comfort of children and parents using this route.

The Parish Council was more than happy to support this initiative, and we hope these lights will make a real difference, providing a safer, well-lit path for everyone. Thank you to the school for raising this important issue, and we look forward to seeing these new lights benefit our community throughout the seasons ahead.



The grass on the zip wire mound is growing well, thanks to careful landscaping efforts. We'll be reviewing its progress in early December to ensure it's ready for safe use. We know everyone is excited to enjoy this new feature, and we're aiming to have it open soon. Keep an eye out for our official opening announcement and thank you for your patience as we make sure everything is perfect for the community to enjoy.

At the Parish Council meeting on 4th November, a representative from National Highways joined us to discuss the A12 widening project. Unfortunately, they were unable to provide an update on the project's future, as they are still awaiting an official announcement from the Government. We understand the community's interest in this significant project, and we will keep residents informed as soon as we receive further information.

Our Duke of Edinburgh Awards scheme taster evening took place on 30th October at the Village Hall. We were pleased to offer information to those that attended and the Essex County Council DoFE team gave an excellent presentation about the awards scheme and a demonstration of the camping stoves. We'll have more of an update for you in next month's issue. In the meantime, if you'd like to find out more details or have your teenager take part, it's not too late – for more details, get in touch with benjamin.blackborow@essex.gov.uk, cllrparker@hatfieldpeverelpc.com, cllrshort@hatfieldpeverelpc.com, or parishclerk@hatfieldpeverelpc.com

And finally, we are looking forward to seeing you at our annual Christmas in the Park event, this Sunday 8th December. It's free to attend and runs from 1- 6pm in and around the Village Hall. There will be a small charge for rides, the Christmas Raffle and face painting. There will be plenty of local groups, charities and businesses with their stalls and food and drink will be available for purchase.

On the day, **parking at the Village Hall will be suspended to residents but there will be a few disabled bays available.** Little Bears Nursery have also kindly offered space in their car park.



Community Agents

Part of the Essex Wellbeing Service

Community Agents provide support to individuals in order to maintain independence living in their own home. We can help anybody over the age of 18 that is in particular need of a home visit in order to source the support needed.

Community Agents can assist with:

Equipment
Blue Badges & Bus Passes
Benefits
Social Opportunities
Transport
Meals & Shopping
Carers Support

To refer yourself, family member, friend or neighbour to Community Agents.

Please call EWS direct 0300 303 9988

Please note you must have the person you are referring's permission. Lines open Monday to Friday 8am-7pm and Saturday 9am-12pm.



Essex
Wellbeing Service





HATFIELD PEVEREL PARISH COUNCIL

CHRISTMAS IN THE PARK

We hope to see you on Sunday 8th December to kickstart your holiday season with our free annual event, Christmas in the Park.



The fun starts at 1pm with the Essex Yeomanry Band playing some festive classics followed at 1.30pm by our children's sing along with Lara George, local songstress and a previous contestant on The Voice! They'll be going through all the well-known Christmas songs such as Rudolph the Red Nosed Reindeer,

When Santa Got Stuck up the Chimney and, of course, the beautiful Silent Night. Everyone is welcome to join in and we're looking forward to seeing some festive costumes.

Throughout the day from 1 - 6pm there'll be children's craft activities, and a chance to buy from local craft stalls, businesses and charities inside the Village Hall. You might just find a fantastic gift for someone special!

For a small fee, children can have their faces painted and enjoy the mini rides available in the car park. We'll also be visited by some special Santa helpers (hint: the furry kind who do a lot of work come Christmas Eve!) Santa himself will be welcoming those children who have pre-booked to visit his grotto from 1.30pm - 5pm. And look out for our Magician who'll be moving around the event impressing you with some mind-blowing illusions.

If you miss the earlier performance, later at 3pm, you'll be able to listen to the Essex Yeomanry Band again, delighting us with our favourite Christmas oldies.

At 5pm, we welcome our piper to lead us out to the Christmas tree which will light up at 5.30pm - Christmas will well and truly have begun!



Delicious refreshments will be available to purchase from our Coffee Lounge and The Tippy Grey will be there for your Bailey's Hot Chocolate, Warm Spiced Apple (with or without the rum!) and other tipples! And if it's cake you're looking for then Crafty Bear Kitchen is the stall to head to. We've got gift buying covered with some of our talented stall holders such as Crisp Photography, Tweet Homes, Wotilove, Scents for the Soul, and Tracey Ward Designs. And charities, Community First Responders and Havens Hospices will be there to raise funds for their brilliant causes.



It's going to be a lot of fun and the perfect way to welcome in the Christmas season surrounded by friends and family from the village and surrounding areas.



We do hope you will join us. Take lots of photos and tag us @hatfieldpeverlpc on Facebook or use the hashtag #ChristmasInThePark. We'd love to see all your memories of the day.





ST ANDREW'S, HATFIELD PEVEREL & ALL SAINTS, ULTING

FOND FAREWELLS & FORTHCOMING NEWS

It was wonderful to see a huge turnout for the final service for Father Stephen at St. Andrew's on 3rd November. The Hadfelda Singers, led by Barbara Mason, joined the choir, and gifts were presented by the Scouts, Guides, parishioners, and friends. The celebration continued with a lively party in the church hall, featuring the cutting of splendid celebration cakes.

Thanks to the incredible generosity of the community, Father Stephen was gifted a Memory Book, a framed photo, three pictures of the churches, a garden bench, and an extremely generous cheque.

Now follows Father Stephen's letter of thanks to all:



Dear Friends,

Goodbye, farewell, au revoir! I have been saying these (or a variety of these) over the last three weeks. As I write, the Vicarage is in a state of disarray and some things have already been moved to Dovercourt, Harwich where I shall be living in the near future. I have had my last services at both churches and both were celebrated in suitable style: a Eucharist with sermon, followed by refreshments. And what refreshments! I would like to thank everyone for giving their time to prepare them and thank you, the community for coming.

At All Saints, I looked at the word "farewell" and reminded the congregation that it is a contraction of "fare-thee-well. It is an assurance of God's presence in the process of leaving but leaves open the possibility of returning at some stage. Those who say farewell or fare-thee-well are also invoking blessings at the same time. Similarly "goodbye" is a contraction of the phrase "God be with you" and so when we wish someone goodbye we are doing more than simply expressing good wishes as we part company. We are actually commending them into God's safe keeping. In my 29 years in this parish I cannot say goodbye without remembering the many good people and organisations I have known and when I say goodbye, remember that I mean God be with you.

One of the things I will miss is the ability to just drop into church and pray; St Andrews essentially being in my front garden. Many times, when I have been sorting out weddings and funerals I have been asked if they could look inside our beautiful church. Some have been even more explicit, often saying, we don't come to church but we would like you to say a prayer for us. Sometimes, at my invitation, they will light a candle to focus their prayers. Fr Derek, at All Saints, has had the same experience and I feel that anything which makes people feel closer to God can only be good. Being a priest is a sacred calling, remembering that one of the last commands of Jesus in St John's Gospel is "tend my lambs" and "feed my sheep". This is the first calling of all priests in God's church; we are called to be servants and shepherds amongst the people to whom we are sent. In the Service for the Ordination of Priests there is a line which is both moving and challenging: "Remember always with thanksgiving that the treasure now to be entrusted to you is Christ's own flock." Words that state what an enormous responsibility priesthood actually is. Responsibility yes, but also an immense privilege. But we are reminded that we are not alone. You, the people become part of that calling; your priest represents you before God and ministry only truly flourishes when the priest is supported by the congregations and the wider community of the parish. I have felt very supported during my time here and I hope that whoever follows me will receive that same support.

To conclude, it has been a joy and a pleasure as well as an honour to have been part of your community (I include all Saints, of course), to work with you, and to listen to you. I would also like to say not only thanks for the many gifts and good wishes but how imaginative those gifts and the expressions of goodwill that accompanied them were.

In conclusion, thank you for your friendship, your enthusiasm, your commitment, your faith and your kindness. I will pray for you as you continue your Christian journey, both individually and collectively.

I would normally end any service I take with a blessing, so I will end with one of my favourites:-

*The Lord bless you and keep you;
the Lord make his face to shine upon you and be gracious unto you;
the Lord lift up his countenance upon you and give you peace*

Fr. Stephen

Forthcoming news and events

Moving forward, the Witham team, in particular, Rev Howard Schnaar and his wife Deirdre, will be helping us with services.

Our Advent /Christmas Foodbank drive has already started. The need for food parcels has never been higher, demand exceeding supply, so if you are able to contribute it would be wonderful. Advent heralds the expectation of a better and more just world and this is a practical way of doing something towards that end. Sue and John Warrant will be delivering our collection soon after 15th December.

At the Light of the World service at St Andrew's at 4.30 on Christmas Eve we will as usual be collecting money [or vouchers] and gifts for local Home-Start families. The generosity of our Parish is so appreciated. Their local coordinator has checked that we can still help as they have more families than ever in need of help and support and are really stretched. We don't need to wrap our presents as they will sort them all.

Please look after yourselves and your loved ones. We will be praying for you and the whole community. We send you our best wishes and pray that you find comfort, peace and joy this Christmas.

Our December services can be found on the next page...

For any queries please ask John Strange 01245 381004 johnstrange32@btinternet.com
or John Tomlins 01245 380359 johnandanna.tomlins@btopenworld.com

Parish of St Andrew Hatfield Peverel with All Saints Ulting

SERVICES etc. for **DECEMBER 2024**

	St Andrews	All Saints
Sunday 1st	ADVENT SERVICE 10.15am	9am Holy Communion (BCP)
Saturday 7th	10 -12 noon in St Andrew's Church Hall CHRISTMAS COFFEE MORNING	
Sunday 8th	8am Holy Communion 10.15 am - For all Ages Crib Celebration	4pm Carols by Candlelight
Tuesday 10th	12.30 Soup and Roll – in aid of Sudan	
Sunday 15th	10.15 Parish Eucharist	9am Holy Communion (BCP)
Sunday 22nd	10.15 Parish Eucharist 4pm Christmas Celebration	9am Parish Eucharist
Tuesday 24th	4.30 Light of the World 11 for 11.30pm Midnight Service	11.30pm Midnight Service
Wednesday 25th	10.15 All Age Christmas Day Eucharist	9am Christmas Day Eucharist
Sunday 29th	10.15 Said Service	9am Holy Communion (BCP)

Edward Bear: Every Thursday 10am to 11.30 – Coffee and Company – in hall - with short worship on alternating weeks. (N.B. closed over holidays)

Churches open for prayer every Wednesday: All Saints at 9am [with Morning Office]

Vicarage: 01245 380958

Rev'd Derek Clark 380627 07860235778

John Strange 01245 381004 johnstrange32@btinternet.com

John Tomlins 01245 380359 johnandanna.tomlins@btopenworld

HADFELDA WALKERS

In October, we drove to Terling, parking near the Village Hall, and walked in a circular route around the village. Our walk encompassed Fairstead and the edge of Fuller Street with the surrounding countryside, and finished past the ford where we enjoyed refreshments at the Owls tea shop. The Rayleigh Arms pub and restaurant opposite is a very good alternative for those who want to refresh for longer! This was also a longer than normal walk at just over 5.5 miles but very scenic and rural.

Hadfelda Walkers are a group of villagers who meet on the last Thursday of every month for 3–4-hour duration walks around the local area. Sometimes using cars to take us further afield, e.g Terling, Wickham Bishops, Maldon, Heybridge and more, to begin and finish the walks.

Typically, the walks are of 4-5 miles duration at a reasonable pace and a refreshment stop is sometimes scheduled particularly in the summer months. There is no subscription, fees or membership - it's all free. In recent walks we have visited Toppinghoe Hall woods for the annual bluebell display, Little Braxted, Wickham Bishops, Papermill Lock and many more local and further afield areas.

Our next walk will be Thursday 30 January 2025, meeting outside the Village Hall by the recycling site at 10am. New members who would like to explore the local area are particularly welcome to join us but please do not bring your family pets. If you would like more information, please contact Graham Bushby on 01245 380472.

HATFIELD PEVEREL FLOWER CLUB

www.hatfieldpeverelflowerclub.co.uk

Demonstration

'Festive Fun'

by

Samantha May



at

Hatfield Peverel Village Hall, Maldon Road, CM3 2HP

Wednesday 4th December

7.30 for 8pm

Refreshments and Raffle

Guests welcome Non-members £7

LIVE TRADITIONAL JAZZ AT ITS BEST!

WICKHAM BISHOPS JAZZ CLUB

JAZZ SATURDAYS

3RD SATURDAY OF THE MONTH

MUSICIANS

21st Dec Allen Beechey's New Orleans Allstars

18th Jan Pete Rudeforth's Jazz Band

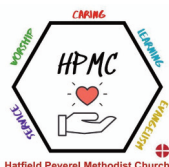
15th Feb Paula Jackman's Jazz Masters

6.30pm for 7.30pm til 10pm

RING PETE ON 07548 775777 OR EMAIL WICKHAMBISHOPSJAZZCLUB@GMAIL.COM

WICKHAM BISHOPS VILLAGE HALL SNOWS CORNER, CM8 3JZ

Proceeds to charitable causes



HATFIELD PEVEREL METHODIST CHURCH

We have had a lively few weeks worshipping in Room 3 at the Village Hall. Our service of remembrance on 10th November allowed us to reflect, remember and be thankful. We chose to observe the two minutes silence at 11.00 am in the Coffee Lounge, helped by the service from the Cenotaph being shown on the screen there. All who were present in the café shared in remaining silent – a poignant and moving opportunity to reflect as members of our community.

Jane and Eddie are very much enjoying their time leading the Lunch Club at St. Andrew's Junior School. We enjoyed learning more about Samson and the special gift he was given by God, thinking about the special gifts we have been given. The parable of the lost sheep reminded us how it feels to lose something precious – or to become lost, and the joy in finding the precious item, or being found. The story of Jesus calming the storm made us realise how much Jesus cares about us and will help us. Each child wrote their name on a character they had created before putting them in the boat to remember that Jesus can calm our fears. They then all enjoyed participating in retelling the story, creating the storm using fabric for sea and clouds and making storm sounds using a thunder tube, rain sticks and various other instruments.

We would like to extend our love and prayers to you all in Hatfield Peverel. May you receive every blessing this Christmas and in the coming year.



Sunday worship at the village hall

Do join us on Sunday mornings from 09.15 in Room 3 of the Village Hall (access through the coffee lounge). You can contact us as follows:

Minister - Barry Allen 01621 853423 | Mission Lead: Jane Cook 07827 594535

For information and prayer requests email us at hpmethodistchurch@gmail.com To learn more about our church visit <https://e-voice.org.uk/hpmc/>

Give something
fabulous
from **AVON** this
Christmas

Shop with your local **AVON** Rep Brenda Smith
Online at: <https://my.avon.uk.com/store/Brenda-smith>
Or call: 07790 752339

the
COFFEE LOUNGE
at Hatfield Peverel Village Hall

Mon - Sat 9 - 4 pm
Sunday 10 - 4 pm

BREAKFAST
LUNCH
CAKES & SNACKS
HOT & COLD FOOD

Coffee Club every Thursday
9 - 11am. Everyone welcome



THE WINTER GARDENER

Typically, two allotment holders greet each other passing through the gate.

"Did you get as much done as you planned?" "Well, I got a lot done but nothing I'd planned to do."

Allotment Maintenance – Job 1. (Always)

If you visit the allotments often, you will notice a group of diehards who are there most days. They claim it will only be for an hour or so, but they're most often seen leaving after 2 to 5 hours of fresh air, & maintenance, better known as therapy. Unfortunately, there are a small number of folks who only drop in for an hour or so once a month (whether needing to or not).

The crop results differentiate the two.

December's Gardening Jobs

But it's too cold to garden, in December!

- If it's too cold to go outside, you could also stay in and plan your plot for next year. Consider what went well this year - and what didn't - and think about rotating your crops.
- Another indoor job – spend some time in your shed, cleaning, oiling, and sharpening your tools.
- Schedule a service for appropriate tools, mowers, tillers, trimmers etc.
- Make sure new seeds are ordered.
- It's a similar story outside; barbecues, paths, terracing and guttering require a clean now.
- You can harvest lots of veg for Christmas, including parsnips, leeks sprouts & winter cabbages, all of which can be left in the ground until you need them.
- Winter-prune redcurrants, white-currants, Gooseberries, Blackcurrants.
- Divide rhubarb and force some for an early treat.

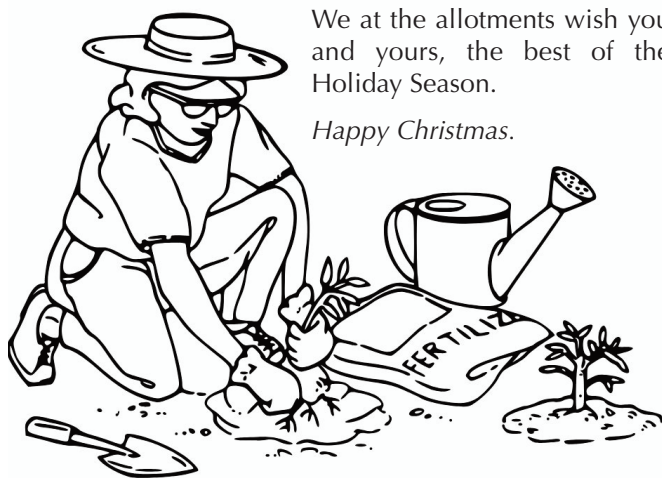
Yearend wrap-up includes thinking ahead in anticipating spring planting

March and April are typical for most to begin planting. Compost is a good source of nutrients and replaces fertilisation to some benefit. But, a word of caution: there is compost, there's peat-free compost and then there's *serious* compost!

Most gardeners buy compost where they try to save money then later find it is inferior quality containing rubbish fillers with no nutritional value. Peat-free, while better, is still experimental and requires different watering techniques. At the allotment, we use an excellent peat-enriched product (it is still legal and available) with fantastic results. Yes, we do pay more but not that much more. It's possible to pay upward of £20.00 for a 60L bag - we pay half that! Many serious gardeners on the allotments order 10 to 20 bags a season, regardless of price. This stuff works!

I'm telling all in Hatfield Peverel who read this that we usually order some extra. This year's costs are not yet posted, so, if you are interested in some of this great compost for yourself, drop me an email with the subject "Compost" including your details and we'll follow up with you: drew@drewprice.org.

By the way, we have only three starter plots left on the new site and one on the old site. Visit and join us at: <https://membermojo.co.uk/hpaa/joinus>.



We at the allotments wish you and yours, the best of the Holiday Season.

Happy Christmas.

D HOLMES BRICKWORK & LANDSCAPING

- Brickwork
- Paving
- Fencing
- Pointing
- Maintenance



07914 043826

dhlandscapes@btinternet.com

[@danholmes_brickwork](https://www.facebook.com/danholmes_brickwork)

H.P. HORTICULTURAL SOCIETY

MEMORIES OF SUMMER ADVENTURES

Cast your mind back to those far-off summer days when, armed with sandwiches, we boarded a Lodge's coach outside the old Bank building in The Street, ready to explore new horizons. For many years, members of the village horticultural society and flower enthusiasts enjoyed these local outings, organized with precision by Clive Emberson, a dedicated member of the society.

And then our horticultural whizz kid, Clive, had a stroke of inspiration: turn the daily outings into yearly longer adventures! And so began our annual five-night, four-day excursions to some of the most beautiful destinations in Britain and abroad. It wasn't easy to organize—finding coaches, hotels, and places to visit, not to mention persuading everyone to join in—but Clive made it happen.

The tradition began in July 1998 and, apart from the occasional hiccup, continued until this year, 2024. We could only find a few photographs of these travels - but perhaps you have more of your own!

Normandy, 1998

Traveling “on the wrong side” of the road and navigating the French language proved a bit challenging for some, but what a holiday it was! One highlight was a visit to Claude Monet's Garden at Giverny, west of Paris, with its unforgettable Japanese bridge featured in so many of his paintings.

Malvern, 2014

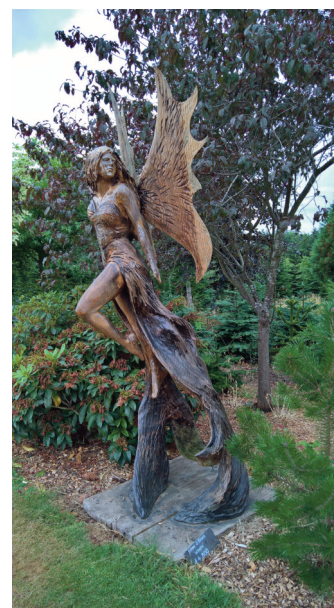
Sixteen years later, based at The Abbey Hotel in Malvern, we explored Edward Elgar's birthplace museum near Worcester. A metal sculpture of Elgar basked in the late afternoon sunshine, while in the Rose Bank Gardens, stood a metal sculpture of two buzzards by Polish-born artist Walenty Pytel, created to mark the Queen's Diamond Jubilee in 2012.



Going AWOL on the first day, our adventurous footpath warden struck out alone and discovered, across the River Wye from Brobury Gardens, St. Andrew's Church in Bredwardine. The churchyard is home to the simple white-cross grave of diarist Reverend Francis Kilvert, its vicar until his untimely death in 1879.

Frodsham, 2018

In 2018, we stayed in Frodsham, Cheshire, and visited Mount Pleasant Gardens with its ever-changing sculpture trail. One standout piece was *Daphne*, a sculpture in Coastal Redwood with Douglas Fir wings by Simon O'Rourke. On our final morning, we visited Cotebrook and toured Sandymere, the home and 16-acre gardens of Sir John Timpson, who has pioneered employment opportunities for ex-offenders in his businesses.

**East Yorkshire, 2024**

This year marked our final adventure, to East Yorkshire, west of Kingston upon Hull. Despite the indifferent weather, we explored some fascinating locations. At Bridge House in Elvington, on the banks of the River Derwent, we saw a garden that spends months underwater each winter due to annual flooding. That afternoon, we visited Southwood Hall in Cottingham, a beautifully restored former farmhouse and gardens with a rich history.

These journeys have left us with wonderful memories. Special thanks to Clive - here about to have a cooling paddle! - his wife, and the many helpers who made it all possible. Where would we be without you?

Wishing you all a happy Christmas – and don't forget to get digging and planting. And we haven't mentioned a single flower in this article!



THE WESTERN FRONT ASSOCIATION, ESSEX BRANCH

PLAYING THE PIPES OF PEACE



December 1914 is probably best known for the Christmas Truce. Large battles along the Western Front had gradually stopped with the onset of winter. Conditions were wet, cold and in many places extremely muddy, for both sides although British positions tended to be on lower ground than those of the Germans.



World War 1 Art: The Christmas Truce
courtesy of www.ukphotoarchive.org.uk

It was widely reported that the German troops put Christmas trees and lights on the front of their trenches and sang carols. The next day there was some meetings between the sides. One can only imagine what was going through the minds of the soldiers that took those first steps. There were photos taken of both sides together and souvenirs were exchanged. Time was used to collect

unburied bodies from the area between the trenches and to carry out repairs on the trenches.

What of football?

There is a great mythology about a football match played between the two sides. That a football was kicked around, or something resembling a football, is beyond doubt. On a recording at the Imperial War Museum, in his own words, a soldier from the Cheshire Regiment states that the Germans produced a real football and there was a kickabout involving a couple of hundred people.

Not all units took part though. On the same recording a soldier from the Hertfordshire Regiment said that the Germans put lighted objects on their trench front. The response was an order for rapid fire which was, of course, carried out. The Germans continued to celebrate Christmas and did not respond. On some sectors there was no truce.

The 2nd Battalion of the Essex Regiment was not on the Front Line at Christmas but had been in the Ploegsteert frontline area of Belgium, close to where one of the larger Christmas Day truces took place. I think an explanation of the mindset of the soldiers of both sides can be seen in the Battalion diary of 11th of December,

"6am: Slight frost, foggy

10am: Officers and men of A & D Companies met Germans halfway between the trenches. Germans said they were fed up. Their trenches appeared to be held in about the same strength as ours and in same state"

The area where the Ploegsteert Truce took place is lovely farmland today. The attached photo shows the high ground looking towards Mesen Church (formerly Messines) from roughly the British front line at the time. The Tower of the Messines Peace Park is on the skyline to the left.



photo courtesy of Jim Kevany, WFA

January talk

December is one of the months when The Essex Branch will not be holding a talk at The Village Hall at Hatfield Peverel. We return on Wednesday, January the 8th, with a talk about the casualty evacuation process during the Battle of Arras in 1917. This is a fascinating subject that shows the huge improvements seen since the start of the war in 1914 when the medical services were still more or less 19th Century.

Until then, we at the Western Front Association wish you all the compliments of the season.

EVERY WEDNESDAY
1PM - 3PM
HATFIELD PEVEREL VILLAGE HALL

JOIN US FOR TEAS, COFFEES AND LUNCH
IT'S ALL COVERED WITH A SMALL £4 CHARGE

PLUS WEEKLY ACTIVITIES SUCH AS BINGO OR QUIZZES

THE EMC IS OPEN TO ALL
YOUNG AT HEART OR A SEASONED VETERAN OF LIFE,
EVERYONE IS WELCOME

EMC
Every Members Club

HATFIELD PEVEREL
PARISH COUNCIL

TERLING WI

A NIGHT OF TASTING & FESTIVE FUN



In October's meeting, we welcomed Nikki, from The Only Way is Spirits. Based in Sawbridgeworth (not technically in Essex – but Nikki is born and bred here and couldn't find the perfect location for her distillery in Essex!), she left the corporate world and began her journey to gin. After going on a distillery tour, she decided during COVID that that's what she wanted to do – make her own gin!

That famous first Gin has won various awards around the world, and one product soon turned into ten. With her range and numerous bottles of Gin, Vodka, Rum and Tequila, Nikki came with what looked like a whole shop!

After a couple of technical difficulties with the laptop and projector, we got started with a short talk on the business, and then got down to the tasting! All forty-two ladies had a taste of most (if not all) of what Nikki had to offer, finishing on the famous Tequila. We ended the evening with a quick quiz, and some Christmas shopping!



This month (Thursday 19th December) we will draw our bumper Christmas Raffle and have some fun with Christmas Bingo! You are all very welcome.

Also, in December we will be running, for the third year, the Seniors Christmas Lunch. This is generously provided by Lord Rayleigh and hosted at The Rayleigh Arms. Last year, we welcomed 70 over 65s for a two course Christmas Lunch. To qualify, you must be aged 65 or over, and live in Terling, Fairstead or Fuller Street. It is a wonderful day, and we are so grateful to Lord Rayleigh for enabling this to happen once again. THANK YOU!

We meet every fourth Thursday of the month in Terling Village Hall. Want to give it a try first? No problem, you can attend up to three meetings before becoming a member (guest fee applies). Complimentary tea and cake served as standard at Terling WI meetings as well as friendly faces, friendships and lots more.

Key dates for Terling WI

Thursday 19th December – Monthly meeting
Thursday 23rd January 2025 – Monthly meeting

For more information, email terlingwi@outlook.com or phone: 07926 649669



@terlingwi

45th Anniversary Year

HATFIELD PEVEREL FLOWER CLUB

Programme for 2024/25

4th September	- Roger Woolnough: "September Splendour"
2nd October	- David Wright: "Wheels in Motion"
6th November	- Pat South: Christmas Sparkle"
4th December	- Samantha May: "Festive Fun"
N.B. No meeting in January	
5th February	- Angelika Mead: "A Wild Kitchen"
5th March	- Elaine Boobier: "My Life in Flowers"
2nd April - 7th	Crystal Dyball: "Junk and Jumble"
May - 4th June	Lee Berrill: "Remember When"
- 2nd July	Terry Babbage: "My Indian Experience"
	Deb Hart: "Willow in the Landscape"
	A talk and demonstration
N.B. No meeting in August	
Hatfield Peverel Village Hall, Maldon Road, CM3 2HP	
7.30 for 8pm	
Refreshments and Raffle	
Guests welcome Non-members £7	
For further details telephone:	
Jane Eastall on 01245 466364	
or to join the email group to receive updates	
contact: Helen Peter on helenopeter@yahoo.co.uk	
www.hatfieldpeverelflowerclub.co.uk	

theWI
INSPIRING WOMEN

Christmas Raffle

£1 per ticket.

Prizes include;
£100 cash
Luxury M&S Hamper
Beach Hut Hire Voucher, etc.

To purchase tickets, please
contact us on the details below.



Omars

OF HATFIELD PEVEREL

CHEERS TO 26 YEARS!

Spicing Up The Season

Wishing our loyal
customers and
community a Merry
Christmas & flavourful
New Year!



01245 380 099 / 01245 381 125

www.omartandoori.co.uk

The Street, Hatfield Peverel, Chelmsford, Essex CM3 2EA

PEVEREL WINE CLUB

FROM BORN IN THE USA TO BEAUTY AND THE BEAST!

November's well-attended meeting was entitled Born in the USA and featured a selection of Californian wines introduced by new Club Chairman Steve Spearman in his own inimitable style. Following the results of the American presidential elections, there was probably less enthusiastic waving of the Stars and Stripes than there might have been if the outcome had been different! Steve reported a dearth of reasonably priced American white wines apart from Chardonnay, which nearly caused renewed riots in the Capitol from ABC attendees (i.e. Anything But Chardonnay)! However, Steve was able to persuade these non-believers into tasting the 3 Californian Chardonnays selected for the tasting, and some of them admitted to being converted by the more upbeat oaky flavours which are California's trademark.

White wine of the evening was agreed to be **Sainsbury's Taste the Difference Californian Chardonnay at £12**, complete with one of the gruesome labels for which the winery, Chronic Cellars, is famous. The ABC contingent felt suitably vindicated by the revelation that the wine contained judicious quantities of Viognier, Grenache Blanc and Picpoul which all contributed to the wine's flavours of peach, pear and lychee and made it a more rewarding mouthful than the other 2 whites tasted.

It was a different story with the red wines: plenty of choice for grape varieties, and all in the meaty, beaty, big and

bouncy style we have come to expect from Californian wineries. Winner was a rich, ripe and juicy Zinfandel from the renowned Paso Robles area, and earned a double-header for both Sainsbury's and Chronic Cellars, in that the winner was a **Taste the Difference Zinfandel from Chronic Cellars, £12 but only £10 with Nectar** – and once again complete with scary label!


We are all now looking forward eagerly to the Club's annual Christmas Party, complete with a magnificent 4-course buffet provided by members and committee, plus the triumphant return of last year's live band, Beauty and the Beast, ready to cast us under their spell once again!

If you'd like to join us in December - or indeed for any other meeting - for a light-hearted and inexpensive evening out, you would always be very welcome. Please give Vee a ring beforehand on 01245 355723 however, to ensure there is enough food and drink for all. (We normally meet on the second Wednesday but at Christmastime it is the third Wednesday). Our website www.peverelwineclub.co.uk is currently being reviewed, but I can happily send a copy of the exciting 2024 (and soon the even more exciting 2025) programme if you email me at peverelwineclub@hotmail.co.uk.

Peverel Wine Club:
Vee Green, Secretary (01245 355723)



get your business in front of local residents and potential customers



advertise with us!

email: communications@hatfieldpeverelpc.com for a media pack

HATFIELD PEVEREL VILLAGE VOICE NEWS, EVENTS & WHAT'S ON IN HATFIELD PEVEREL

YOUR VILLAGE NEEDS YOU!

HAVE YOUR SAY ON THE HATFIELD PEVEREL DEVELOPMENT PLAN REFERRENDUM ON 15th SEPTEMBER

BUS FARES ACROSS THE COUNTRY WILL RISE IN THE NEW YEAR.

On 1st January 2025, the maximum fare for a single bus journey in England, outside London, will rise to £3.

Following the expiration of the £2 cap on fares, Transport secretary Louise Haigh said the move 'will avoid a cliff edge at the end of this year and keep fares affordable across the country'. 'That's why the Government will cap fares at £3 for an additional year and provide over £1bn to deliver better bus services.'

MALDON FILM CLUB

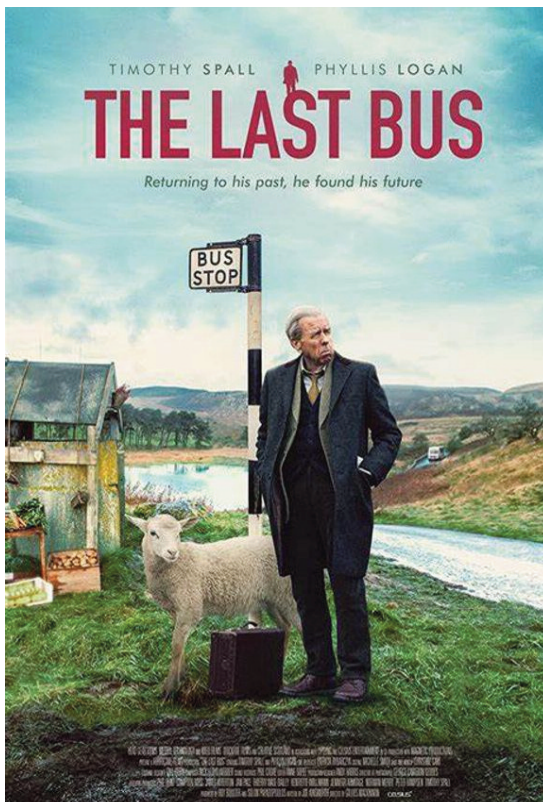


GOING FROM STRENGTH TO STRENGTH

Our 20th season has got off to a tremendous start – great films and some 100 members coming along to each screening! Currently topping the leader board is *The Phantom of the Open* with an approval rating of 87.6%. The season continues with the screening of the Oscar nominated *Perfect Days* on Tuesday 3rd December and *The Last Bus* on Tuesday December 17th. Prior to the screening of *The Last Bus*, we shall be holding our first social of the season.

Perfect Days tells the story of Hirayama who works as a toilet cleaner in Tokyo. He seems very content with his simple life and follows a structured and uncluttered everyday existence dedicating his free time to his passion for music and books. Hirayama also has a fondness for trees many of which he photographs. However, more of his past which he has diligently worked to put aside is gradually revealed through a series of unexpected encounters.

The Last Bus is a heart-warming tale of Tom (Timothy Spall), a pensioner whose wife, Mary (Phyllis Logan), has just died. Using his free bus pass Tom travels from mainland Britain's most northerly point, John O'Groats, to his original hometown at England's most westerly point, Land's End to spread his wife's ashes near their first home. He carries with him only a small suitcase, travelling the length of the country with it. Along the way, his adventures are recorded by the people he meets and helps, and by the end of his trip he has unwittingly become a social media celebrity.



Our films for January 2025 are the BAFTA award winning *20 Days in Mariupol* and the highly acclaimed *Wicked Little Letters*.

Our 20th season continues until 28th May 2025 with films being shown fortnightly on Tuesdays in 2024 and Wednesdays in 2025. The Club meets at Maldon Town Hall, doors open at 7.15pm, wine and soft drinks are available at a charge from 7.30pm and unless notified to the contrary all films will commence at 8pm.

The price of an annual subscription remains at £30. So why not join now and watch the remaining 13 films for free. In addition, there are a limited number of places for junior members aged 16-18 in full time education and training at the reduced cost of £20. As a member you will be asked to give your reaction to the films you have seen and also help the committee compile the programme for the following season. Membership is open to all, and new members will be made very welcome. Members' guests pay just £4 per film!

For further details and an application form please visit our web site www.maldonfilmclub.uk, pop into the Maldon Visitor Information Centre (Tuesday – Saturday between 1100 and 4pm) or phone 01621 869340 for membership enquiries. Alternatively, you are welcome to come along as my guest, meet members of the committee and pay your annual subscription on the night.

If you have any further questions, please do not hesitate to contact me, John Salisbury, on 07905 971608.

HADFELDA (LADIES GROUP)

TEA, TALK AND CHARITY

As a group we are always happy to support charities, so we were very pleased to welcome John Rogers from the RNLI to our October meeting. John is a volunteer speaker & fund raiser for the Maldon branch of the RNLI and has spent many years sailing in and exploring the Blackwater Estuary.

This was an open meeting, and we were delighted to welcome a large number of visitors, including many gentlemen. John was an enthusiastic and interesting speaker who has organised many fundraising events for the RNLI and obviously knows a great deal about the area. He informed us that there are two islands in the estuary, Northey and Osea. Northey is owned by the National Trust and is an uninhabited nature reserve, although the public can visit with permission. Osea is privately owned with various accommodations available including an impressive manor house. The estuary is also worth a visit for keen bird watchers as there are plenty of waders to be seen, especially at low tide.

To help raise more money for the charity we had a stall selling a selection of RNLI 'goodies' A great opportunity for our members to purchase cards and gifts ready for Christmas.

We like to try and vary our meetings, so as a complete change, at our November meeting we were entertained by George Zarb playing his Guitar.



Our December meeting is on 11th December, a little earlier than usual so we don't clash with Christmas, however the time and venue remain the same, 2pm in St. Andrew's Church Hall.

We are a friendly, fun group and are always happy to welcome visitors. Most of our members would agree that the best part of the meetings is the tea and biscuits and having a chat with old and new friends. If you'd like to give us a try but find the thought of coming on your own daunting, give me a ring! Marel 01245 380827

DON'T MISS A THING

FOLLOW OUR  PAGE



DO YOU HAVE A FEW HOURS TO SPARE?

DO YOU HAVE A WILLINGNESS TO HELP OTHERS AND WOULD LIKE TO PUT SOMETHING BACK INTO YOUR COMMUNITY?

Braintree Community Transport are looking for volunteers either in your own car or in one of our 12 seater minibuses. No set commitment - hours to suit yourself. Out of pocket expenses are reimbursed and pensions/benefits are not affected.

Minibus volunteering

Car volunteering

[braintreemunitymoig](https://braintreemunitymoig.org)



To find out more please call
01376 557883 or email
community.transport@braintree.gov.uk

STEFAN TABACU – MY PERSONAL TRAINER

JOINT HEALTH & MOBILITY

*Hello again, everyone! It's Stefan here, your local mobile personal trainer. Last month, we focused on balance and stability exercises. This month, I'd like to talk about **joint health and mobility**—two aspects that play a huge role in maintaining comfort and freedom of movement as we age. I'll also share a practical exercise you can try at home to help improve joint mobility.*

**Why is it important?**

Our joints help us bend, twist, and move fluidly, but over time, they can become stiff or prone to discomfort due to wear and tear. Regular movement and gentle exercises can make a significant difference in how well our joints perform, improving our overall comfort and helping us stay active.

Here are some key benefits of focusing on joint health and mobility:

- **Reduced Stiffness:** Gentle mobility exercises help keep joints flexible, reducing stiffness and discomfort.
- **Easier Everyday Movements:** Maintaining joint mobility makes it easier to perform daily activities, like bending, lifting, or even just walking.
- **Injury Prevention:** Improving mobility around the joints can reduce strain and prevent injuries, especially during activities that require flexibility.
- **Increased Range of Motion:** Joint-focused exercises improve our range of motion, which contributes to better movement patterns and reduces the risk of compensatory injuries.

Exercise Tip of the Month: Hip Circles

This month, I'd like to introduce Hip Circles, a gentle exercise that helps improve mobility in the hip joint. It's especially beneficial for anyone with tight hips or those who spend a lot of time sitting.

1. Start Position: Stand with your feet hip-width apart and place your hands on your hips for stability.



2. Movement: Slowly rotate your hips in a circular motion, moving from front to side, back, and around. Keep the movement controlled and focus on engaging your core.

3. Reversing the Circle: After completing a few rotations in one direction, reverse and repeat in the opposite direction.

4. Repetitions: Aim for 8-10 circles in each direction.

This exercise helps open up the hip joints, which are crucial for walking, standing, and general mobility. Incorporating hip circles into your routine can improve flexibility and reduce lower back strain.

I hope you find this month's exercise helpful for maintaining your joint health. Remember, keeping our joints mobile and comfortable is essential for a happy, active life. Join us at Strutt Memorial Recreation Ground for our community fitness classes, where we work on full-body exercises to keep you feeling your best.

Stay flexible, stay active, and see you next month with another exercise tip!

Stefan - MyPT
07456717115

Instagram @stmypt

FB: @STMyPersonalTrainer/

**DOG WALKER ESSEX**

WE MAKE EVERY WALK AN ADVENTURE

Are you struggling to find time for your furry friend's daily walks?

Worry no more! Dog Walker Essex offers reliable, caring, and enjoyable dog walking services tailored for your beloved companion in the Essex area.

We offer a range of services, including daily walks, drop ins, and more. We can customise our services to meet the unique needs of your pets and your schedule.

Visit dogwalker.pet

@DogWalkerEssex

07761 833996





JOSHUA REILLY-HURTER - DOG WALKER ESSEX

HOLIDAYS WITH OUR HOUNDS



December is a special time of year where we get to spend a little more time with friends and family before the year draws to a close. It's a time I always cherish! Our homes are filled to the rafters with friends and family as well as all sorts of festive indulgence.

We all know doggies love a treat! With food cooking, wine flowing and a full house we can't always have an eye on our doggies and what the sniffers are being given as treats and what our helpful cleaners are picking up off the floor.

However tempting it may be when they look at you with those puppy dog eyes, it's essential to keep certain foods away from our doggies, as they can be harmful or even toxic. Here's a list of common items from a Christmas dinner table that dogs should avoid:

- **Chocolate** contains theobromine, which is toxic to dogs.
- **Onions and Garlic** in any form (raw, cooked, or powdered). They can cause gastrointestinal irritation and lead to red blood cell damage.
- **Grapes and Raisins** Even small amounts can cause kidney failure.
- intoxication, coma, or even death.
- **Nuts** especially macadamia nuts, which can be extremely toxic.
- **Cooked Bones** They can splinter and cause blockage or tears in your dog's digestive system.
- **Rich or Fatty Foods** such as gravy, which can lead to pancreatitis.
- **Dairy Products** Some dogs are lactose intolerant, leading to digestive issues.
- **Xylitol** Often found in sugar-free sweets and gum; it is highly toxic.
- **Poultry Skin and Stuffing** These are too rich and can cause pancreatitis or upset stomachs.
- **Christmas Pudding/Cake and Mince Pies** contain raisins and other ingredients toxic to dogs.
- **Mouldy or Spoiled Foods** These might contain toxins that can cause vomiting and seizures.
- **Corn** can cause blockages and are not easily digestible by dogs.

When clearing up make sure to dispose of food waste securely and watch out for dogs trying to sneak food under the table. It's always best to have some safe dog treats on hand to include them in the festivities without any risk.

A Christmas bundle of joy?

Getting a puppy for Christmas can be a joyful decision, but it requires careful consideration and preparation and should never be considered as a gift for someone who hasn't weighed up all the potential challenges. Owning a dog is so rewarding but it is a long-term commitment and shouldn't be underestimated. If, however, your heart is set on a Christmas pup of your own, here are some points to consider:

1. **Avoid Impulse Decisions** - Ensure that the decision to get a puppy is well thought out and not just a spontaneous holiday gesture.
2. **Research Breeds** - Investigate different breeds to find one that matches your family's lifestyle, considering energy levels, size, and care needs.
3. **Adoption and Reputable Breeders** - Consider adopting from a shelter or buying from a reputable breeder. Avoid puppy mills and always check breeder credentials.
4. **Cost and Commitment** - Be prepared for the financial and time commitments involved, including food, veterinary care, and training.
5. **Holiday Environment** - Christmas can be hectic; ensure a calm, safe, and puppy-proof environment to avoid overwhelming your new pet.
6. **Training and Socialisation** - Start training and socialising from a young age to ensure your puppy grows into a well-adjusted adult dog.
7. **Vet Visits** - Arrange for an initial check-up with a vet soon after getting your puppy to ensure they're healthy and to discuss vaccinations and care.
8. **Supplies** - Have all necessary supplies ready, such as food, bed, crate, toys, and grooming tools.
9. **Family Involvement** - Make sure all family members are informed and on board with the responsibilities of caring for a puppy.
10. **Post-Holiday Plans** - Consider how a new puppy will fit into your routine once the holidays are over, ensuring you can continue to meet their needs.

And lastly, if you feel a puppy isn't for you, maybe consider adopting an older dog. There are plenty of shelters around who can help you with your decision. As well as saving a life, you'll be making a friend for life!

Merry Christmas from the Dog Walker Essex family!

To get in touch with Dog Walkers Essex, visit <https://dogwalker.pet>, follow our Facebook page [@DogWalkersEssex](#) or call 07761 833996



HATFIELD PEVEREL FOOTBALL CLUB

CLUB NEWS FOR 2024

Our new playing season kicked off in August/September, and for 2024/25 we are running 14 junior teams from Under 7s to Under 18s, including one girls' team. On the senior side, we field a Men's Saturday 1st team, Reserves, a Men's Sunday team, and a Ladies Sunday team - that equates to over 250 players in total at the Keith Bigden Memorial Ground.

We train Sundays 9-12pm with refreshments, bacon rolls and sweets available to buy. Plus, our licensed bar opens on Saturday and Sunday afternoons. For fixture details, visit our social media or check: <https://fulltime.thefa.com/>

Ladies Day 2024



Our fourth annual Ladies Day took place on 1st September at Wickham Bishops Road, celebrating women's football. The day featured specialist coaching for young players and tournaments across age groups, ending with an exhibition match by the Ladies' team.

School Holiday Football Camps

This August, we held two successful Summer Holiday Camps, as well as during the October half-term. These included 'girls only' sessions and more camps will continue during all school holidays in 2025.

Perimeter Fence & Site Maintenance

In late October, we began the much-needed replacement of the perimeter fence around the Senior pitch. We're grateful for the support of Gary Smith (JTL Finishing Solutions), Conner Dale Fencing Contractors, Grady O'Brien (GB Finch), and Charlie South Groundworks, all with ties to HPFC, who generously contributed their time and sponsorship. Our thanks also go to the Parish Council for their ongoing backing.

Meanwhile, our committee and volunteers have been busy with general upkeep, including installing a new ball-stop net and storage shed, along with regular clubhouse and pitch repairs. Ongoing pitch maintenance—such as vertiquaking for winter drainage and additional fertiliser—ensures our pitches remain in top condition, frequently praised by visiting teams.

We meet regularly with the Parish Council and our partners at the Bowls Club and Maldon Croquet Club to discuss site upkeep and potential car park expansion. The KBMG Liaison Group is also developing a 10-year 'Vision Plan' for the site, to be shared soon.

HPFC Ladies – Player Pathway

Hatfield Peverel FC Ladies are off to a strong start in their second season, focusing on creating a sustainable pathway for girls in our community to enter and excel in football. This effort is paying off, as we recently celebrated our first U16 graduate joining the senior team. Millie Marks made her midfield debut against Runwell, marking a proud moment for her and the club. Our Ladies' team is dedicated to developing more players like Millie, offering growth opportunities within the club. For updates, match highlights, and player news, follow us on [Instagram](#)



Dates for your diary

- Sunday, 15th December - Final junior matches before Christmas
- Saturday, 21st June 2025 - Thomson Day 2025

Interested in getting involved?

We offer 'Meerkats' training for ages 4-6 (Reception & Year 1) and 'girls only' Wildcat sessions. We're also expanding 'Soccability' sessions for players with disabilities or additional needs. Visit our [website](#) for more info and bookings.



Sponsorship Opportunities

As a registered charity (RGN: 1140160), we're always seeking new sponsors to help us enhance our facilities. If you or your company are interested in becoming an official HPFC sponsor, please visit our website or contact Club Chair Nick Webb. New and existing pitch-side banners will soon be added to the main pitch perimeter fencing.

HATFIELD PEVEREL FC: CONTACTS



Youth Enquiries (U11 to U18)	Terry Lingley - Secretary	07736 042466 terrylingley@hatfieldpeverelfc.co.uk
Youth Enquiries (U7 to U10)	Rich Bute – Secretary	07795 690576 richard.bute@outlook.com
Senior Enquiries	Jim Isaacs – Secretary	07736 437831 jim.isaacs@sky.com
Club Chair	Nick Webb	07808 866543 nickwebb@hatfieldpeverelfc.co.uk
Club Vice Chair & Treasurer	Gareth Howard	07778 408051 treasurer@hatfieldpeverelfc.co.uk
HPFC Wildcats	Donna Fletcher	07943 874219
HPFC Meerkats	Luca Curtis	07745 728430
<div>  Hatfield Peverel FC  hatfieldpeverelfc hpfc_ladies  http://www.hatfieldpeverelfc.co.uk </div>		

VILLAGE HALL NEWS

We have a fabulous range of events for December, including Christmas in the Park on Sunday 8th, an old-school Variety show on Saturday 14th, Total 80's Christmas Party on Saturday 21st and the Pantaloons return with A Christmas Carol on Monday 23rd. Find out more on the back page.

Coming up in 2025 we have the Pantaloons returning with Sense and Sensibility (May 25th) and Hamlet (Sept 7th). For music, we have booked The Post Floyd Dream, A Tribute to Carole King, The ELO Encounter, UK Bee Gees, Shades of Simon, and Maximum Who – and that's just in the first half of the year with lots more to come!

Get your tickets as soon as they go on sale as these are likely to sell out fast.

All tickets are available at <http://tinyurl.com/HPVH-Tickets>.

New additions

We are pleased to welcome some fantastic new groups to the hall. Side by Side is a free support group for carers and families living with the challenges of dementia. The group started on Nov 19th and will run monthly on a Tuesday 2 - 4 pm.

On November 13th we welcomed a monthly Women's Circle group, who gathered at 7:15 pm. Each month will have a different theme which will always be a nature-based or spiritual practice.

Each Wednesday at 3.30 pm Shea-Lowe Education runs tutoring by qualified Primary teachers for KS2 Maths, 11+ Preparation and Y1 and Y2 English.

For contact information on clubs and associations at the hall, see our Clubs page at <https://hatpevvhall.org/clubs-at-hpvh>.

For adults, our weekly clubs include Badminton, Table-Tennis, Dog-Training, Latin Dance, EMC Lunch Club, Coffee Club, Wine Club, Flower Club, Hatfield Peverel Methodist Church, The Western Front Association, Stitch to Enrich and Bingo. All details on how to join in are on our Clubs page on the website.

Badminton Mondays 7pm 	HotSteps Tuesdays from 3:30pm 	EMC Lunch club Wednesdays 1-3pm 	Table Tennis Tuesdays 7:30pm 
Tuesday Toddler Time Tuesdays 9:30am 	Little Glow Baby Sensory Thursdays 10:30-11:30 	Shea-Lowe Education Wednesdays 3:30-6:15 	Little City 3rd Wednesday of the month 9:30am 
Kazen Kai Karate Thursdays 3:45 	Methodist Church Sundays 9:15am 	Women's Circle 2nd or 3rd Weds 7:15pm 	Dancematic Latin Dance Fridays 2pm 
Essex Yeomanry Band Sundays 9:30-13:00 	Dog Star Dog Training Thursdays 6pm 	Western Front 2nd Wed 8-10pm Jan, Mar, May, Jul, Sep, Nov 	Stitch to Enrich 1st and 3rd Thursday 2-4pm 
Flower Club 1st Weds of the month 7:30pm 	Bingo 1st & 3rd Friday of the month: 7 - 10pm 	Essex Tai Chi Academy Saturdays 9:30-12:30 	Wine Club 2nd Weds of the month 7:30pm 

You can stay in touch with the Village Hall by signing up for our mailing list (click the link on the website home page or scan the QR code).

All Village Hall details are featured on our website (www.HatPevVHall.org), on the village hall noticeboards and on Facebook at www.facebook.com/hatfieldpeverelvillagehall or call the Box Office & Room Bookings number on **0300 102 0473**



Mailing List

HPVH DIARY

Dec

Sun 8th	**Christmas in the Park**	1pm
Sat 14th	SJP Christmas Variety show	7:30pm
Sat 21st	Total 80's Christmas Party	8pm
Mon 23rd	A Christmas Carol (Pantaloons)	3pm



Mailing List

December shows at HPVH



WWW.HATPEVHALL.ORG



Click to Buy Tickets

Christmas in the Park
Sunday 8th December 1pm - 6pm at
Hatfield Peverel Village Hall

- 1pm Essex Yeomanry Band
- 1.30pm Children's Christmas Sing-along (all welcome)
- 1-6pm Craft Stalls
- 1-6pm Children's Christmas Crafts
- 1.30-3.30pm Santa's Reindeer & Sleigh
- 1.30-4.30pm Children's Face Painting*
- 1.30-5pm Santa's Grotto* (online pre-booked tickets only)
- 1.30-5pm Magician
- 5pm Piper
- 5.15pm Christmas Tree lights switch on
- 6pm Close

Please note, parking at the village hall is for Blue Badge holders only.
*There will be a charge for these activities

www.sjpentertainments.co.uk
SJP ENTERTAINMENTS
PRESENTS

CONFIDENT
THE TOUR
2024

£14/£12 STARRING
STEVE PATTERSON

HATFIELD PEVEREL VILLAGE HALL
14TH DECEMBER 2024

A VARIETY SHOW THAT COMBINES COMEDY, LIVE MUSIC, MAGIC,
PRIZE BINGO AND MORE INTO ONE BIG NIGHT OF LIVE ENTERTAINMENT!

BOX OFFICE 0300 102 0473 BUY YOUR TICKET

www.ticketsource.co.uk/hatfield-peverel-village-hall
DOORS OPEN AT 7.00PM, SHOW STARTS AT 7.30PM
Tickets Must Be Shown At The Door
All drinks must be purchased from licenced bar

HPVH VILLAGE HALL

total 80s

80s RETRO PARTY!
HATFIELD PEVEREL VILLAGE HALL

Saturday, December 21st
Doors : 7pm Show : 8pm
Tickets :-
www.ticketsource.co.uk/hatfield-peverel-village-hall

HPVH VILLAGE HALL

The Pantoons
present
A Christmas Carol

Monday, December 23rd
Hatfield Peverel Village Hall
Doors: 2:30 Show: 3:00
Tickets: £10-£15
www.ticketsource.co.uk/hatfield-peverel-village-hall

Tickets from:- <http://tinyurl.com/HPVH-Tickets>