

HATFIELD PEVEREL

VILLAGE VOICE

News from Hatfield Peverel, Nounsley
and surrounding areas

SUMMER'S HERE!



Open Day at the
Allotments

New season for
Film Club

PLUS Party in the
Park lineup



CONTENTS

Parish Council News.....	3
Party in the Park.....	4
St Andrew's and All Saints	5
Stefan Tabacu, My Personal Trainer	7
Helen Rollason Cancer Charity	9
Community Park	11
Hatfield Peverel Methodist Church	14
Western Front Association	15
Hatfield Peverel Allotment Association	17
Terling WI.....	19
Hatfield Peverel & Ulting Horticultural Society	20
Maldon Film Club.....	21
Peverel Wine Club.....	23
News from the Village Hall.....	24

USEFUL INFORMATION

Click below for Parish Council and village information and contacts

[Hatfield Peverel Parish Council](https://www.hatfieldpeverelpc.com/parish-council/) *

[Parish Council Meetings](https://www.hatfieldpeverelpc.com/parish-council-meetings/) *

[Clubs and Societies](https://www.hatfieldpeverelpc.com/welcome-to-our-village/village-culture/clubs-and-societies/) *

[Local Information and Contacts](https://www.hatfieldpeverelpc.com/welcome-to-our-village/community-matters/local-information-and-contacts/) *

Credits: Editor: Janice Fitzpatrick
communications@hatfieldpeverelpc.com

Publisher: Andrew Smith Print Ltd
andrew@asmithprint.co.uk

The DEADLINE for the AUGUST 2026 issue of Village Voice is 14th JULY 2026. (Any copy received after this date may not appear in the July issue)

For information on copy specifications email:
communications@hatfieldpeverelpc.com

If you wish to advertise your business in Village Voice, please get in touch for a media pack and rate card.

This publication is printed on FSC-sourced paper and is fully recyclable.

* [Hatfield Peverel Parish Council](https://www.hatfieldpeverelpc.com/parish-council/) – <https://www.hatfieldpeverelpc.com/parish-council/>

* [Parish Council Meetings](https://www.hatfieldpeverelpc.com/parish-council-meetings/) – <https://www.hatfieldpeverelpc.com/parish-council-meetings/>

* [Clubs and Societies](https://www.hatfieldpeverelpc.com/welcome-to-our-village/village-culture/clubs-and-societies/) – <https://www.hatfieldpeverelpc.com/welcome-to-our-village/village-culture/clubs-and-societies/>

* [Local Information and Contacts](https://www.hatfieldpeverelpc.com/welcome-to-our-village/community-matters/local-information-and-contacts/) – <https://www.hatfieldpeverelpc.com/welcome-to-our-village/community-matters/local-information-and-contacts/>



Farleigh Hospice's
Open Gardens 2026

Visit some of the most beautiful private gardens in mid Essex this summer.

Beaulieu and Channels – Saturday 23
May Springfield – Sunday 7 June
Danbury and Little Baddow – Sunday 14 June
Little Waltham and Classic Car Show – Sunday 14 June
South Woodham Ferrers – Sunday 5 July

For more information visit:
farleighthospice.org/gardens



Hatfield Peverel & Ulting Horticultural Society

SPEAKER EVENING

THURSDAY 2ND JULY

HELD AT

Village Hall (Vic Olley Room),
Maldon Road, CM3 2HP

DOORS OPEN 7.30PM SPEAKER 8PM

LIFE IN THE UNDERGROWTH

by Roger Hance

ALL WELCOME

Members free non members £2

REFRESHMENTS

Potatoes available to grow in a bag for competition

CASH ONLY

e-voice.org.uk/hatpevgardens



Hatfield Peverel Parish Council News

Community Information Event

We were glad to see so many residents attend our annual Community Information Event last month. A lot of fun was had with the Table Tennis Club and well done to the winner of the Peverel Wine Club's raffle!

If you were unable to pop along, you missed out on finding out about the village and the work of the council as well as the District Council and National Highways plans for the area.

We also had representatives from local clubs and societies – some of whom contribute to the Village Voice. Do check out our website for all that the Village Hall offers. There are loads of clubs and groups that might offer something for you as well as community help such as Hearing Aid checks and Bereavement Counselling. Keep informed by following us and the [Village Hall](#) on our social media channels or referring to the website. And, of course, we welcome all residents to our monthly council meetings.

Community Park

Something you might have discovered at the Community Information event was our continuing plans and progress on the Community Park. While it's a huge task for such a small council, we are extremely proud of the progress we've made in bringing this project to life. We hope it's not too long before you can benefit from what we like to think of as Hatfield Peverel's Best Kept Secret! Read more in Councillor Renow's update on page 11.

Party in the Park

Just a few days to go before Hatfield Peverel Parish Council's annual summer event, Party in the Park! The fun starts from 1.00pm on Saturday 4th July here in Hatfield Peverel on the Strutt Memorial Recreation Ground. (Please, no setting up before 12.30pm)

There's a great lineup of live music and performances throughout the day. (See our notice on page 4.) They'll be various food and drink stands, local stallholders, charities, and community groups plus a selection of Vintage Cars on display. Feel free to bring a picnic but please refrain from BBQs. There will be parking available on the rec but if you're able to walk to the event – even better. And remember, it's free entry! Bring the family, perhaps some chairs and a picnic rug so you can catch all the live music and events throughout the day.

A big thank you to the Community Events Committee who have worked hard to bring this event to life.

Sport in the Village

Our Barclays Free Park Tennis sessions are growing in membership and continue to run every Sunday from

10–11am. They are completely free to attend. As places are limited, we encourage participants to book via the *Sport in the Village* section of our website or by visiting this link: <https://tinyurl.com/Book-FreeParkTennis>

No experience is needed to join in – complete beginners are welcome. We'd also like to extend a big thank you to the volunteer Tennis Activators who've gone through training to provide these sessions.

How to keep up to date with Council news

To stay up to date with Parish Council news, please visit our website at <https://www.hatfieldpeverelpc.com>, see noticeboards around the village or follow us on our social media platforms (see below).

The next two Full Council Meetings will take place on Monday 6th July and Monday 3rd August. Residents are always welcome to attend. Please see the website or noticeboards for the agenda.

Sarah Gaeta

Parish Clerk Hatfield Peverel Parish Council
parishclerk@hatfieldpeverelpc.com | 01245 382865
 Parish Council Office, Village Hall, Maldon Road, Hatfield Peverel, Essex CM3 2HP

Hatfield Peverel Parish Council

FOLLOW US ON

social media



SCAN ME

[@hatfieldpeverelpc](https://www.instagram.com/hatfieldpeverelpc)

INSTAGRAM



SCAN ME

[@hatfieldpeverelpc](https://www.facebook.com/hatfieldpeverelpc)

FACEBOOK

KEEP UP-TO-DATE WITH
ALL COUNCIL NEWS & EVENTS &
PARTY IN THE PARK UPDATES





Scan for Party in the Park programme

ORDER OF THE DAY!

PARTY IN THE PARK

SAT, 4TH JULY 2026
1:00 PM - 9.30 PM

Enjoy the sounds of DJ Mark from 1pm

Salsa D'Lite	1.45 pm
Hope & Ruin	2.30 pm
Hot Steps	3.15 pm
White Onion	3.45 pm
KL Aerials	4.45 pm
Inari	5.30 pm
The Allykats	6.45 pm
Raffle Draw	7.30 pm

and our headliners

The Skafonics

8 pm - 9.30 pm

STRUTT MEMORIAL
RECREATION GROUND

WITH THANKS TO PAUL MASON ASSOCIATES

FREE ENTRY!

FUN
FOR ALL THE
FAMILY



Parking available on the rec



PARTY
IN THE
PARK
2026

Download to your phone

NEWS FROM ST. ANDREW'S & ALL SAINTS, ULTING

First, we can report that Rev Howard's operation successfully took place on 1st June and, as we go to press, convalescence is well under way. However, it is too early to be certain of the full benefit of the operation- a complete cure was never promised but hopefully the pain previously experienced will be substantially reduced. Howard hopes to be able to resume duties by the middle of this month. In the meantime, Rev Noah Cockett, Assistant Curate at St Nicolas who has been living in the Vicarage at St Andrews, has been helping with services for which we are most grateful. Noah is getting married in September and will have been able to hear his own banns being read in a service he has been leading!

Back in May we hosted the AGM of the Friends of Essex Churches which was graced with the presence of the Lord Lieutenant and included a fascinating talk by a director of the Friends of Friendless Churches about the rescue of two wonderful local churches - St Peter's, Wickham Bishops and St Mary's, Mundon both of which had at one time faced total dereliction. Do look them up on the website of the [Friends of Friendless Churches](#) and if you can, do visit them - your visit(s) will be amply rewarded.



In months where there is a fifth Sunday, different churches in the Witham & Villages Team Ministry take turns to host a service on that day. Although not formally part of that team we have happily shared in that arrangement. So, on Whitsunday members of St Andrew's congregation combined with the congregations of other churches in the team for a splendid service at St Germanus Faulkbourne led by Rev Jane Quinton.

June's Soup & Roll was in support of [Farleigh Hospice](#) and we raised £190 for that splendid charity. The next Soup & Roll will be on Tuesday 14th July 12.30-2.00pm and will be in aid of British Red Cross which does so much in alleviating suffering across the world.

We hope to see folk at the Party in the Park on the 4th July and then look forward to hosting the end of term/year service for the St Andrew's Junior School on 17th July, celebrating particularly those moving onto Secondary School - a special occasion.

And another special occasion - a messy workshop to herald the beginning of the summer holidays on Thursday 23rd July, 10 am - 12.30 pm. It will be wonderful to see children and parents ready and willing to enjoy a fun filled morning with a thank you to God and a light lunch at the end of the session.

Details of our July services, to which you are all most welcome, are on the next page.

Contact details for the Parish Team: Rev Howard Schnaar 07761234165, Rev Derek Clark 07860380627, Charles Cope 01245 382134, John Tomlins 07712699722, Mark Keenan 07791141974



EMC
Every Members Club

**COME TO THE
EVERY MEMBERS CLUB**

EVERY WEDNESDAY

1pm - 3pm

at Hatfield Peverel Village Hall

Join us for teas, coffees & lunch
all for the small charge of £4
plus weekly activities such as
quizzes and bingo

Whether you're young at heart or a
seasoned veteran of life -
all are welcome.

HATFIELD PEVEREL
PARISH COUNCIL

Parish of St Andrew Hatfield Peverel with All Saints Ulting

SERVICES etc. for JULY 2026

	St Andrews (+refreshments after 10.15 services)	All Saints (+refreshments after service on 4 th Sunday)
Saturday 4th July	10 - 12 noon COFFEE MORNING in St Andrew's Church Hall	
Sunday 5th	10.15am Matins (Morning Prayer with hymns)	9am Holy Communion (BCP)
Sunday 12th	8am Holy Communion 10.15 SERVICE in VICARAGE GARDEN	9am Morning Prayer (Common Worship)
Tuesday 14 th 12.30- 2pm	SOUP and ROLL in St Andrew's Church Hall	In aid of Red Cross
Sunday 19th	10.15 Parish Eucharist	9am Holy Communion (BCP)
Thursday 23rd	MESSY WORKSHOP 10 - 12.30pm	St Andrew's Church Hall
Sunday 27th	10.15 Parish Eucharist	9a.m. Parish Eucharist Refreshments after service

Edward Bear: Every Thursday 10am to 11.30 (in term time) - Coffee and Company - in hall - with short worship on alternating weeks
All Saints at 9am Wednesday open for prayer [with Morning Office]
St Andrews 9a.m Thursday open for prayer

Contacts: St Andrew's and All Saints:

Rev'd Howard Schnaar 07761234165

revhoward@withamvillages.team

John Tomlins 01245 380359 07712699722

johnandanna.tomlins@btopenworld.com

Mark Keenan 07791141974

kramnaneek@live.co.uk

All Saints, Ulting: Rev'd Derek Clark

01245 380627 07860235778



FLOWER FESTIVAL

Raising funds for St Michael's Church,
Woodham Walter, CM9 6TT

**"An Historical
Moment in Time"**

**FRIDAY JULY 10TH -
MONDAY JULY 13TH 2026**
10AM - 5PM

Sunday service
09.30 - 10.30

**Free admission
Live music**

Refreshment tent
Opening times:
Fri & Sat - 10 - 5
Sun - 11 - 5
Mon - 10 - 3



Parish of St Andrew's, Hatfield Peverel with
All Saints, Ulting

MESSY SUMMER WORKSHOP

SALT and LIGHT



St Andrews Church
Thursday 23rd July | 10am - 12.30pm

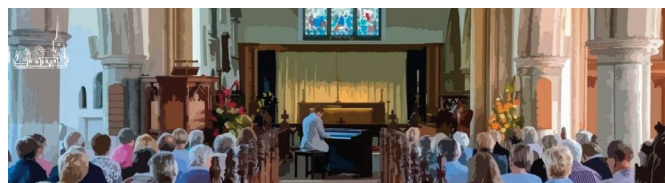
**JOIN US FOR FUN ACTIVITIES,
WORSHIP AND FOOD TOGETHER**

Rev. Howard Schnaar 07761234165

John and Anna Tomlins 01245 380359 07809573405

johnandanna.tomlins@btopenworld.com

for details and to say you can come



The Church of St John the Baptist, Danbury

2026 Monthly lunchtime concerts in the church

2nd Friday of each month
12.15 pm - Entry is free

- 12th Jun The Grammaticus Choir, Dir Clive Smith, Pianist Tim Carey
- 10th Jul Danbury Flutes - our local flute quartet
- 14th Aug Hannah Ambrose (Soprano) and Duncan Archard (Piano)
- 11th Sep The Cardea Trio - music for Soprano, Piano and flute
- 9th Oct The Swift Singers - our local ladies community choir
- 13th Nov Philip Prior - Recitalist, Organist and Director of Music at St James the Great, Colchester with our final hurrah for our organ in its big birthday year
- 6th Dec The Grammaticus Choir and Friends present "The Ancient of Days", at 3pm A Christmas Cantata by Clive Smith
- 11th Dec A Sax Christmas - Colchester Saxophone Quartet with their Christmas musical offering accompanied by readings for the season & carols for you to join in

**Lunches available from 11.45 am
or bring your own!**

Parish Church of St John the Baptist, 55 Main Rd,
Danbury, England, CM3 4NG, United Kingdom



STEFAN TABACU - MY PERSONAL TRAINER

HEALTHY HABITS START SMALL



Hello again, everyone! It's Stefan here - your local mobile personal trainer. This month we're talking about something simple but very powerful: **small healthy habits**. Many people feel they need to completely change their lifestyle overnight to become healthier. In reality, lasting results usually come from small actions repeated consistently over time. Simple daily habits can improve your energy, fitness, mood, and overall wellbeing more than extreme short-term changes.

Why Small Habits Matter

Healthy habits are easier to maintain when they fit naturally into your lifestyle. Small improvements made regularly often lead to bigger long-term results.

Here are some examples of habits that can make a big difference:

1. **Taking short walks during the day** - Even 10 minutes of walking helps circulation and energy levels.
2. **Drinking more water** - Staying hydrated supports joints, muscles, and concentration.
3. **Stretching regularly** - Helps reduce stiffness and improve mobility.
4. **Sleeping consistently** - Good sleep supports recovery and overall health.
5. **Moving more often** - Standing up, using stairs, or simply avoiding long periods of sitting all help.

Remember, you don't need to be perfect. Progress comes from **consistency**, not perfection.

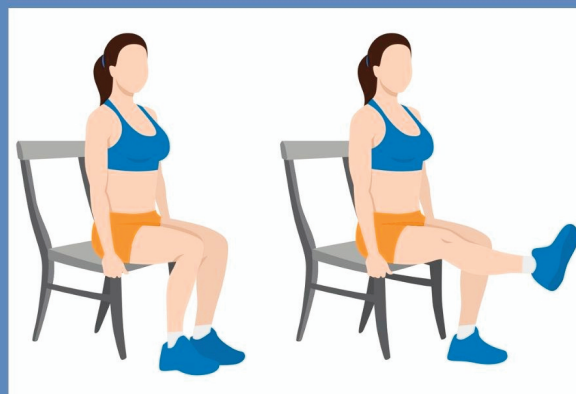
Our Community Fitness Sessions

Our weekly fitness sessions at Strutt Memorial Recreation Ground continue as usual, and it's been fantastic seeing people of all ages coming together to stay active. Since the original funding has now finished, the sessions continue with a small optional contribution to help keep the classes running and to support the community.

My goal remains the same - to provide a welcoming and supportive environment where everyone feels comfortable joining in, regardless of age or fitness level. I look forward to seeing many of you at our sessions in the park. Let's continue building a healthier and stronger community together.

To get in touch, call 07456717115 or follow me on socials
[instagram.com/stmypt](https://www.instagram.com/stmypt)
[facebook.com/stmypersonaltrainer](https://www.facebook.com/stmypersonaltrainer)

EXERCISE TIP OF THE MONTH Seated Leg Extensions



This simple exercise helps strengthen the thighs and improve knee stability, making everyday movements easier.

How to do it:

1. Sit upright on a chair with both feet flat on the floor.
2. Slowly extend one leg straight out in front of you.
3. Hold for 2 seconds at the top.
4. Lower the leg back down slowly.
5. Repeat 10-12 times on each leg.

This is a great exercise for improving leg strength and circulation, especially for people who spend long periods sitting.

BARCLAYS
FREE PARK TENNIS
LTA

FREE, SOCIAL TENNIS EVERY WEEKEND

Book your spot at The Hatfield Peverel Tennis Courts (Strutt Memorial Recreation Ground)



THE AGENT FOR
all seasons



Call today for a **FREE**,
no obligation, market appraisal

01268 222000 • 01245 382555 • 01621 742310

Paul Mason Associates

Essex Property Specialists

www.paulmasonassociates.co.uk
info@paulmasonassociates.co.uk

LATEST NEWS AND UPCOMING EVENTS

At Helen Rollason Cancer Charity we offer a wide range of support – complementary therapies, counselling, mindfulness and yoga classes, support groups, coffee mornings as well as separate ladies and men's groups. We're here for anyone with any type of cancer at all stages. Our aim is to provide a safe space where people don't have to put on a brave face – a relaxing and calming place. All of this is funded through our retail sales in shops and eBay, kind donations and the fundraising from the events we organise – of which we have two super ones coming up this summer...

Timeless in the Summer



On Sunday 12 July step back in time at Hedingham Castle! There will be music and entertainment for adults and children, gift stalls, caterers and a large display of classic and modern cars and motorbikes. You'll also be able to visit the castle!

On Sunday 30 August, we have a vintage day at Layer Marney Tower with music, dancing, stalls, vintage cars, food and drink. Plus, the lovely Tudor buildings will be open for you to visit.

Find our more details and book tickets for all our events at helenrollason.org.uk/helen-rollason-cancer-charity-events

Helen Rollason Cancer Charity

DATES FOR YOUR DIARY

12 July	Timeless at the Castle. A day out at Hedingham Castle	
18 July	Donation day at the centre in Hatfield Peverel. 9am to 12pm. Parking available for you to drop off your pre-loved items.	
30 Aug	Marvellous Vintage. A day out at Layer Marney Tower	

Helen Rollason Cancer Charity supports adults who have received a cancer diagnosis within the last 3 years, and their carers, who are being treated for cancer by an Essex hospital

Details of all our events and challenges are on our website at www.helenrollason.org.uk/events

MENS GROUP

FIRST THURSDAY OF EACH MONTH

10.00AM - 12.00PM

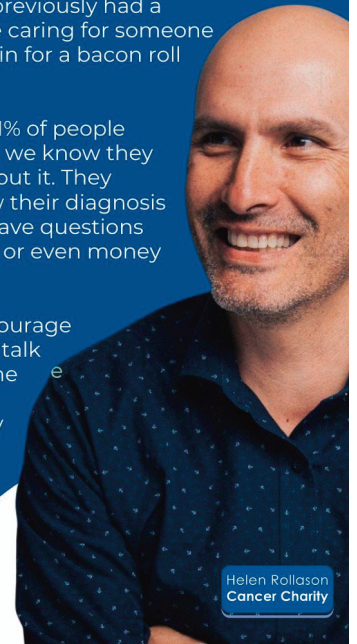
Mid Essex Support Centre
in Hatfield Peverel

Come along for an informal drop in for men who currently or have previously had a cancer diagnosis, or are caring for someone living with cancer. Pop in for a bacon roll and a cuppa.

While men represent 51% of people diagnosed with cancer, we know they find it harder to talk about it. They might worry about how their diagnosis will affect loved ones, have questions about work, symptoms or even money worries.

The sessions are to encourage men and their peers to talk about going through the issues of either having cancer or being directly affected by cancer.

For more information please contact our Mid Essex Support Centre on 01245 382888.



Helen Rollason
Cancer Charity

BEER & GIN FESTIVAL

At Hatfield Peverel Cricket Club



Guest Ales - Gin Bar

FRIDAY 6pm Womens T20 cricket + evening live music

SATURDAY 1pm 1st XI cricket + evening live music

SUNDAY 1pm cricket

HATFIELD PEVEREL CRICKET CLUB, Church Road, CM3 2LD



@hatfieldpeverelcricketclub

Timeless at the Castle

CHROME, CLASSICS & CHARM



Featuring:

***Car Display, Live Music,
Vintage Games, Stalls, and Tasty Treats***

12 JULY, 2026 | 10 AM - 4PM

HEDINGHAM CASTLE

PREBOOK TICKETS ONLINE FOR EARLYBIRD TICKETS AT

www.helenrollason.org.uk

OR PURCHASE ON THE DAY

**For more information call 01245 380719
or email fundraising@helenrollason.org.uk**

Fundraising in aid of

Helen Rollason Cancer Charity



SCAN ME!



Registered with
**FUNDRAISING
REGULATOR**

Registered Charity No: 1052861

COMMUNITY PARK

AN UPDATE FROM THE PARKS TEAM

The Community Park Committee continue to work towards opening the park for visitors.

We were afforded the opportunity to explain our intentions for the park and given a supportive initial reaction when local leaders from the Forestry Commission visited recently.

Consideration is being given to engaging an experienced consultant to help develop a long-term vision for the site and secure the support needed from the Forestry Commission to bring it forward.

This will enable us to tackle the large areas of poplar trees that currently dominate parts of the site. Their dense canopy limits the amount of light reaching the ground, making it difficult for native trees and plants to thrive naturally.

Through a gradual programme of selective thinning, more light will be allowed into these areas, encouraging the growth of native species and creating opportunities to introduce a greater variety of trees. Over time, this will help create a more diverse woodland and improve habitats for wildlife, increasing biodiversity across the site.

With the support of a consultant and the Forestry Commission, including the granting of a felling licence where required, the Parish Council will be better placed to access government funding to help deliver the park's long-term vision.

We are still hopeful of opening the site to visitors from mid to late July, although a number of final details remain to be completed before this can happen.

We want to manage the opening carefully so that we can assess levels of interest and ensure that the car park can comfortably accommodate visitor numbers without causing disruption. Our aim is to preserve the peaceful atmosphere of the site and ensure that everyone can enjoy a quiet and relaxing visit.

As only a small number of volunteers are currently familiar with the site and its pathways, one option being considered is to offer a series of guided walks during the initial opening period. These accompanied tours would



help visitors become familiar with the routes available and the areas that can be explored safely.

Please keep an eye on the Parish Council's Facebook page for details of how and when visitors will be able to book a place on these guided walks. We also hope that additional volunteers may be willing to assist during the first few weeks of opening to help welcome visitors and ensure everything runs smoothly.

Reaching this stage of the project is an exciting milestone, and we look forward to finally welcoming residents into this beautiful natural space. For many years the site has remained a hidden gem on our doorstep, and we hope it will provide enjoyment, recreation and opportunities to connect with nature for generations to come.

Hatfield Peverel Flower Club

Programme for 2026

N.B. No meeting in August

2nd September	Diane Leggett and Shirley Macro - "Surprise, Surprise"
7th October	Debbie Bull - "Memories are Made of This"
4th November	Linda Kingcott - "Sunset to Moonlight"
2nd December	Moira Neville - "Once Upon a Star"

Hatfield Peverel Village Hall, Maldon Road, CM3 2HP
7.30 for 8pm

Refreshments and Raffle
Guests welcome Non-members £8

For further details telephone:
Jane Eastall on 01245 466364
or to join the email group to receive updates
contact: Helen Peter on helenopeter@yahoo.co.uk

www.hatfieldpeverelflowerclub.co.uk

Christopher THE LOCKSMITH

ARE YOUR LOCKS BEHAVING BADLY?

We Value Old Fashioned Customer Service
A Local Trusted Family Business Since 1989

-  Specialist in UPVC & Wooden Doors
-  No Call Out Charge
-  No Fix No Fee
-  All Work Fully Guaranteed
-  10% Senior Citizen Discount



For More Advice & Help Call Christopher:
07772 111 222

www.christopherthelocksmith.co.uk

 Braintree District Council

AgeWellFair

Thursday
16th July 2026
10.00 – 13.00
The Institute
15 Bocking End, Braintree
CM7 9AE

No need to book and admission is **FREE***



SCAN HERE TO REGISTER



If you prefer to book over the phone, please call
01376 552525
You can also reserve your space by emailing
communityservices@braintree.gov.uk

Getting older can be difficult to navigate. Come along and find out how local services can support you and those you care for.

30+ local organisations will be attending to offer you advice, support and help.

*If you do choose to register, you will receive a FREE goody bag

chelmsfordplumbingandheating.co.uk | sales@chelmsfordplumbingandheating.co.uk



01245 478588

A trustworthy family run business specialising in Gas, Oil, LPG, Electrical, Plumbing, Air-con and Renewables.

Boiler Installs, Servicing & Repairs
New Heating Systems
Plumbing Repairs
Electrical Services
Air-con & Renewables

- ✓ All calls are answered personally
- ✓ Confirmed bookings given
- ✓ No job too small!
- ✓ Work covered by 12-month guarantee















**10%
OFF**
COLLECTION
ORDERS

*MINIMUM SPEND £20.00



OMARS

— OF HATFIELD PEVEREL —

Purveyors of Fine Indian Cuisine



01245 380099



omartandoori.co.uk

2025

**ENGLANDS
BUSINESS
AWARDS**

WINNER

**BEST INDIAN TAKEAWAY
ESSEX**



FAMILY RUN
INDIAN RESTAURANT
& TAKEAWAY



DINE IN WITH
NO CORKAGE FEE



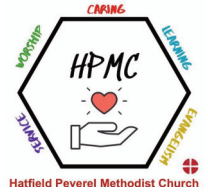
COLLECTION
& TAKEAWAY

Thank you for your continued support

We look forward to serving you!

FOLLOW US ON SOCIALS FOR THE LATEST
DEALS & OFFERS





HATFIELD PEVEREL METHODIST CHURCH

METHODIST NEWS

We enjoyed meeting people at the recent Community Information Event in the Village Hall. We shared some of the items the Stitch to Enrich members had entered in the Village Shows. They have also been decorating bags for Kinder Essex to provide as part of Dementia awareness and are now working towards contributing poppies to the Chelmsford appeal.

In our worship Trinity Sunday gave us the opportunity to consider who God is to us, as Father, Son and Holy Spirit. This allowed us to challenge our perceptions and share how we each connect uniquely. This topic followed our celebration of Pentecost (Acts 2:1-4) when the Holy Spirit was poured into the apostles, empowering them to share the gospel. We were also reminded of the passage in Genesis (Genesis 2:1-7) when God created Adam and breathed life into him. Of course, we also included the passage from Ezekiel (Ezekiel 37:1-14). Who can read about the bones in the desert becoming alive, without thinking of the song 'Dem Bones'? So many examples of us becoming aware of something beyond ourselves which enriches and empowers us to share what we believe. Why not come and be part of our worshipping group? We would love to see you.

Do join us on Sunday mornings from 9.15am in Room 3 of the Village Hall (access through the Coffee Lounge). Or you can find us in the café on Sundays from 10.15am



You can contact us as follows:

Minister: Rev. Dr. Jennifer Walters 07824 440820
 Mission Lead: Jane Cook 07827 594535
 For information and prayer requests:
hpmethodistchurch@gmail.com



Follow us on socials:

@HPRealityChurch @hpmc_methodist_church

<https://e-voice.org.uk/hpmc/>

Bereavement Help Point
 Drop in group for anyone bereaved
Hatfield Peverel
 Date: 1st and 3rd Monday of each month (except Bank Holidays)
 Time: 1.30pm to 3.00pm
 Location: Coffee Lounge, Hatfield Peverel Village Hall, Maldon Road, Hatfield Peverel, CM3 2HP
 For more info visit www.farleighhospice.org/bereavement or call 01245 457308

the
COFFEE LOUNGE
 at Hatfield Peverel Village Hall

Mon - Sat 9 - 5 pm
 Sunday 10 - 4 pm

BREAKFAST
 LUNCH
 CAKES & SNACKS
 HOT & COLD FOOD

Coffee Club every Thursday 9 - 11am. Everyone welcome



WESTERN FRONT ASSOCIATION, ESSEX BRANCH

JULY 1916 - ESSEX & THE BATTLE OF THE SOMME

Regular readers will know that we are tracking the First World War, 110 years ago. From a British perspective, the major event in the War in the July of 1916, was The Battle of the Somme, which started with a massive infantry assault on the 1st of July. This day is rightly remembered as a major disaster for the British with some 60,000 casualties of which nearly 20,000 died. To many people the Battle of the Somme was July the 1st, but the battle actually continued until the 18th of November, with many changes of tactics and innovations including the first use of tanks in September.

Six battalions of the Essex Regiment took part throughout the different actions that made up the Battle of the Somme. From the 25th of June, when British artillery started firing on the German lines, to the 31st of July, the Commonwealth War Graves Commission records 596 men of the Essex Regiment that died. Many of these were local men and the following are just a few listed:

Private Albert Digby, aged 21 from the 9th Battalion who died on the 3rd of July. His parents were from Hatfield Peverel. He is buried in Ovillers Military Cemetery.

Second Lieutenant Stacey Taber, aged 20 from the 2nd Battalion who died on the 20th of July. His parents came from Witham. He is buried in Sucrerie Military Cemetery Colincamps.

Lance Corporal Wilfred Waterman, aged 21 from the 10th Battalion who died on the 1st of July. He was from Springfield, Chelmsford. He has no known grave and is remembered on the Thiepval Memorial to the Missing.



We return to the Village Hall at Hatfield Peverel on Wednesday 8th of July for our next meeting. On that evening, our presentation is "The Battles of the Isonzo" by Jim Smyth. These is a series of twelve battles fought between Italian and Austro-Hungarian forces from 1915 – 1917 in the very northeast of Italy. These were fought over mountainous terrain for very little gain and huge casualties for both sides. Jim has family in the area, so this is more than an academic interest to him.

Our talk starts from 8pm. Members and non-members of the WFA are equally welcome. Any new visitors are guaranteed a friendly atmosphere and a warm welcome from a group of like-minded enthusiasts. We request an entrance donation of £4.00 and tea and coffee are available.

The Essex Branch has a monthly newsletter carrying information concerning Branch talks and events, remembering casualties from Essex, historical articles and forthcoming events or publications that may be of use to anyone with an interest of the First World War.

If you would like to receive a copy by email, with attachments, please ask via essexwfa@googlemail.com. We ask for no other information, and the newsletter is the sole use of the email address.

Jim Kevany
Essex Branch Chairman, Western Front Association



The adventure bus your dog has been waiting for!



Launching on 04 July 2026 at Party in the Park, Hatfield Peverel - join us!

One hour's dog walk not enough, but daycare too long? Why not let your dog hop aboard the Wag & Roll bus!

- Fully insured and DBS cleared
- Extensive experience with dogs
- First ride free
- 3-4 hrs fun-filled outings
- Local pup stops (home collections/drop-offs can be arranged)
- Safety-harnessed open pods
- Climate-controlled and comfortable bus
- Securely fenced private dog fields/woodlands (our group only)
- Additional trips to local and supervised dog pools
- Puppuccino/treats on board
- Volunteers are very welcome to join our happy bus!

To find out more, register your interest or book your first FREE ride, visit us at: www.wagrolldogbus.co.uk or ✉: bookings@wagrolldogbus



Enjoy the fruits of summer!

by Drew Price

July and August are a wonderful time to enjoy the rewards of all the work we put into our gardens and allotments earlier in the year. Long, warm days bring colourful flowers, delicious vegetables, buzzing insects, and plenty of opportunities to spend time outdoors. While there is still work to do, many gardening jobs at this time of year are simple, enjoyable, and rewarding.

Keep Watering Wisely

Pay special attention to pots, hanging baskets, greenhouses, and newly planted crops. Water deeply rather than little and often and early morning or evening watering helps reduce evaporation. Using mulch around plants helps to retain moisture and suppress weeds.

Harvest Little and Often

Many fruits and vegetables will be at their peak so pick your beans, courgettes, cucumbers, tomatoes, and soft fruits regularly. Harvesting often encourages plants to keep producing so feel free to share any surplus with neighbours, friends, or local food charities.

Keep Flowers Blooming

To encourage continued blooms, feed flowering plants every few weeks and deadhead faded flowers on roses, dahlias, marigolds, and bedding plants.

Simple Jobs for the Allotment

Keep on top of weeds before they set seed and check brassicas for caterpillars, removing them by hand where possible. For later harvests, continue successional sowing of lettuce, radishes, beetroot, and spring onions and start planning your autumn and winter crops.

Help Garden Wildlife

Summer gardens are full of helpful visitors so avoid using chemicals whenever possible.

Leave a shallow dish of water for birds, bees, and hedgehogs and allow a small area of longer grass or wildflowers to support pollinators. Plus, keep bird feeders topped up and clean.

Most Important of All...

Take time to enjoy your garden or allotment. Sit with a cup of tea, listen to the birds, watch the bees at work, and appreciate the results of your efforts. Gardening isn't just about growing plants - it's about creating a space that brings enjoyment, relaxation, and a connection with nature.



Interested in an allotment?

Ever thought about growing your own fruit and veg but don't have the room at home? Or perhaps you've heard said that home-grown fruit and veg tastes better? Well, in our humble opinion, they are not wrong. As well as saving the space issue, when you have an allotment, you know exactly what you are adding to your veg - no chemicals to enhance the colour or to extend its shelf life. You cut it when you need it.

With the cost of buying fruit and veg increasing, growing your own saves you money and an allotment is somewhere you can go if you want to have a bit of 'me time'. Forget the problems of the world whilst you work on your plot; Meet like-minded people and have a chat about all topics. And if you think an allotment is all about digging, you may be surprised to hear we have several members who follow the 'no-dig' approach.

How much does a plot cost?

Hatfield Peverel Allotment Association (HPAA) have two sites, both located on Church Road. We have plots of various sizes. An average sized plot on the 'Old Site' will cost approximately £36 for a year's rent, which includes insurance.

We are holding our annual Open Day at the Old Site (behind St Andrew's churchyard) when there will be an opportunity to look around and speak to members. If you wish to apply for a plot, you can join our waiting list by searching for Hatfield Peverel Allotments online or visiting <https://membermojo.co.uk/hpaa>. There you will just need to add a few basic details, including your phone number, and we will contact you as soon as a plot becomes available. Our waiting list is usually quite short, and we aim to contact you within a year.

Hatfield Peverel Allotment Association

ANNUAL

OPEN DAY

GROW TO LEARN

11th July 2026

11am - 2pm



Tour the Plots & Produce Stalls

Cakes, Tea & Coffee for a Small Donation

Fantastic Raffle Prizes to be Won!



Celebrating learning through growing together!

Fun for All the Family! • Kids Activities



Lots of pride – certainly no prejudice!

In our May meeting we welcomed back (for the fifth time) the most fabulous author, Ruth Leigh.

Ruth first visited us in the early days of Terling WI, and has seen us grow into the group we are today. This visit, she updated us on her journey and gave a wonderful talk on her book *A Great Deal of Ingenuity: A Collection of Pride & Prejudice Stories*. It's an entertaining collection of short stories shining a light on the lives of nine characters from Jane Austen's famous novel – not Proud Darcy and prejudiced Elizabeth, book-loving Mr Bennet, or even the snobbish Bingley sisters but the other people busy cooking, mending, flirting, walking and socialising in the background of the 19th Century Regency classic.

Ruth very kindly donated a book bundle towards our raffle on the evening which was very kind. If you haven't seen her before, check out her website ruthleighwrites.co.uk for some fantastic workshops, talks and wonderful gifts.

This month, we're holding our annual summer party. This is a members-only affair, where we enjoy each other's company and have fun. This year the committee will be

catering for the event which will be a nice treat to start the summer holidays off!



KEY TERLING WI DATES

Thursday 16th July – monthly meeting, members only

No August meeting - summer break!

Thursday 24th September- monthly meeting, guests welcome £5pp

☎ (Lucy) [07926 649669](tel:07926649669)

✉ terlingwi@outlook.com

📘 [@terlingwi](https://www.facebook.com/terlingwi)

theWI
INSPIRING WOMEN

LAUGH AND A HALF PRESENTS...

29TH JULY 2026

Live Comedy

AT HATFIELD PEVEREL VILLAGE HALL

HOSTED BY JOE BOR (CHANNEL 4, MOCK THE WEEK)

FUNMBI OMOTAYO (THE JOHN BISHOP SHOW, BREEDERS)

MATT GREEN (AMANDALAND, SLOW HORSES)

£15

DOORS OPEN 7PM. SHOW STARTS 8PM.

New Comedy Nights coming to the hall. Sign up soon so we can bring this fabulous evening to you each month. Note that the tickets for this event are not on our usual site, but one specific to the Comedy promoter.

ADVERTISE IN THE VILLAGE VOICE!

Get your local business seen by residents of Hatfield Peverel & surrounding areas! Prices start from £11 +vat for a quarter page ad



For a media pack, email communications@hatfieldpeverelpc.com

HATFIELD PEVEREL & ULTING HORTICULTURAL SOCIETY

The Society has a busy year planned and we always welcome new members. Our thanks to Upsons Farm Shop where our membership cards and year books are available. Annual membership is just £3 (£2 for seniors).

SCHEDULE OF EVENTS FOR 2026

- 2 July - *Life in the Undergrowth* by Roger Hance
- 24 September - *The Fascination of Fungi* by Tony Brown
- 3 October - The Society Autumn Show at the Village Hall 2pm
- 25 November - *A funny thing happened on the way to The Potting Shed* by Nick Dobson (note: This evening will also include the AGM)

We welcome both members and non-members at our events and would love to see you there. All events are held in the Village Hall at 7:30 pm unless otherwise noted. We look forward to seeing you.

Please do look at the Autumn show schedule on our website. We welcome entries from our community, there is a wide range of categories, including plants, baking, crafts and photography. It is a wonderful showcase for the many talents of the residents of our village



TIPS FOR YOUR GARDEN IN JULY



July is a busy time in our gardens as the warm weather means we spend more time outside! Our gardens bring welcome colour to our outdoor spaces. The greenhouse will be in full production with tomatoes and cucumbers but remember to water regularly as the temperatures increase. Garden borders will need regular hoeing or hand weeding to prevent weed seeds setting. The village allotment association provides some excellent tips and ideas on planting and caring for vegetables in this magazine.

Prune:

Cut flowering lavender heads and store in a dry place for use later in the year. Deadhead summer bedding plants regularly to encourage new growth. Tie up climbing plants to provide support for summer growth and cut back long shoots to encourage flowering next spring e.g. jasmine, clematis, wisteria and honeysuckle. Cut back early summer perennials, such as delphiniums and hardy geraniums, after flowering for a second flush.

Plant:

Now's the time to plant autumn bulbs such as nerines and colchicums. Sow biennials such as foxgloves, wallflowers, honesty and foxgloves for blooms next year.

Propagate:

Softwood cuttings can be taken from pyracantha, Cotinus, Spirea and Hydrangeas. Cuttings can also be taken from Fuchsias and Pelargoniums' and raised in the greenhouse.

For more information about the society, contact Clive Emberson at cliveemberson9@gmail.com or visit <https://e-voice.org.uk/hatpevgardens>

by Karen Bayley



MALDON FILM CLUB

NEW SEASON COMING SOON!

After another very successful programme, which saw a significant increase in membership, Maldon Film Club is preparing for its 22nd season which begins on Tuesday 8th September 2026.

The programme for the 2026/27 season, which is heavily influenced by the members' votes, will, as always, cover a wide variety of themes with films from different regions of the world.

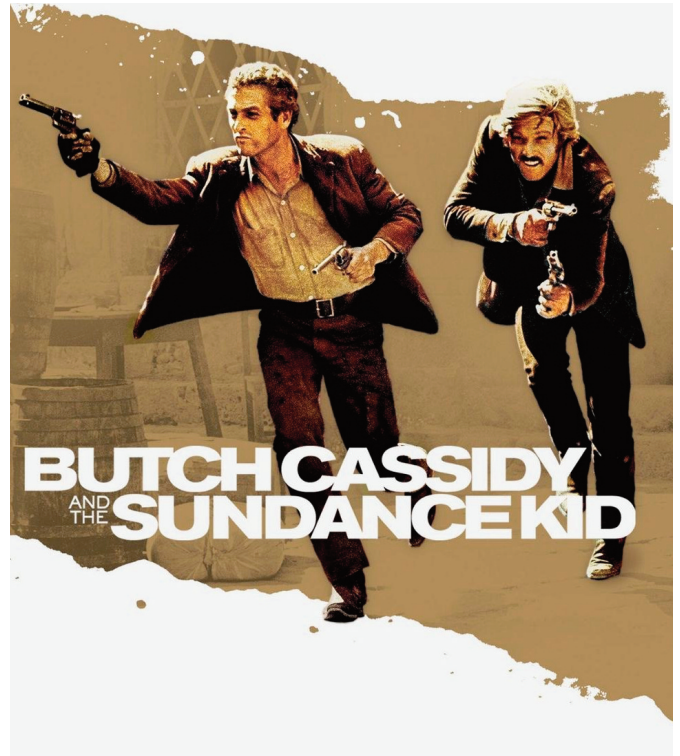
The season, which opens with the highly acclaimed *Song Sung Blue* continues until 26th May 2027 with films being shown fortnightly on Tuesdays in 2026 and Wednesdays in 2027. The Club meets at Maldon Town Hall, doors open at 7.15pm, wine and soft drinks are available, at a charge, from 7.30pm and, unless notified to the contrary, all films commence at 8pm.

I am pleased to confirm that the programme until Christmas is as follows:

DATE	Film Title	Director
8 TH SEPT	<i>Song Sung Blue</i>	Craig Brewer
22 ND SEPT	<i>The Last Journey</i>	Filip Hammar & Fredrik Wikingsson
6 TH OCT	<i>Hamnet</i>	Chloe Zha
20 TH OCT	<i>Lo Capitano</i>	Matteo Garrone
3 RD NOV	<i>The Taste of Things</i>	Tran Anh Hung
17 TH NOV	<i>I Swear</i>	Kirk Jones
1 ST DEC	<i>Past Lives</i>	Celine Song
15 TH DEC	<i>The Golden Spurtle</i> (Christmas Social)	Constantine Costi

After a short break, the club then returns on Wednesday 6th January when the film to be screened will be *H is for Hawk*, which tells the story of a woman who, after the loss of her father, turns to the ancient art of falconry.

The season continues until 26th May 2027 and the programme for the rest of the year includes *It was Just an Accident*, *The Choral*, *The Ballad of Wallis Island*, *Sentimental Value* and the 1969 classic, *Butch Cassidy and The Sundance Kid*.



Many of the 19 films to be screened have received Oscar/BAFTA awards or nominations and, we hope, offers something for everybody. More details of the 2026/27 programme will be published next month.

The annual subscription remains unchanged at £30 which entitles members to free admission to all the season's 19 films - that's less than £1.60 per film! In addition, there are a limited number of places for junior members aged 16-18 in full time education and training at the reduced cost of £20 and members' guests will pay just £4 per film. As a member you will be asked to give your reaction to the films that you have seen and help the committee compile the programme for the following season. Membership is open to all, and new members will be made very welcome. Membership has reached an all-time high and early applications for 206/27 are strongly recommended.

For further details and an application form please check our website www.maldonfilmclub.uk, visit the [Maldon Visitor Information Centre](#) which opens Tuesday - Saturday 1100-1600 hours or phone 01621 869133 for membership enquiries. Alternatively, you are welcome to come along as my guest to the first film of the new season, meet members of the committee and, if you wish, pay your annual subscription on the night.

If you have any further questions please do not hesitate to contact me - John Salisbury - on 07905 971608.



Did you know?

Our waste disposal search tool helps you to find the best way to rehome, recycle, and dispose of your unwanted items.

What do you want to dispose of?


e.g. Wood, food Postcode Search

Start typing and select an item



Give it a try!

loveessex.org/disposal-options



CHAIR EXERCISE

St Andrew's Church Hall
Hatfield Peverel

Tues 10 am - 10.45 am

May 5th, 12th, 19th
June 2nd, 9th, 23rd
July 7th, 14th, 21st
Aug 4th, 11th (return Sept)

Would you like to improve your...
Balance, strength, flexibility, confidence and general fitness levels? Why not **come and join us** and have some fun too!
You will be very welcome whatever your level is.
Fully qualified instructor.

Not sure about coming? Feeling anxious? Have you had a fall or are afraid of falling? Do you have replacement joints? Are you spending more time at home? Has your mobility decreased since Covid? Your exercises will be adapted to your needs!

Medical conditions must be controlled if you would like to attend.
Fully qualified Chair Based Instructor and Personal Trainer
Mental Health & Exercise Level 4

Please come in comfortable, stretchy clothing, leisure footwear and bring water!

Bookings taken now or turn up on the day!
For details and cost mandadurran@gmail.com
Telephone 01376 408046 - Please leave a message.

WICKHAM BISHOPS

JAZZ

SATURDAYS



FEATURING

JUL/AUG Summer break
19 SEP DAVE BROWNING'S JAZZ CATS
17 OCT SIMON NELSON'S DIXIEMIX

3RD SATURDAY OF THE MONTH
6.30PM FOR 7.30PM-10.30PM
WICKHAM BISHOPS VILLAGE HALL,
SNOWS CORNER, CM8 3JZ

FOR TICKETS
RING PETE ON 07548 775777 or EMAIL
wickhambishopsjazzclub@gmail.com
Proceeds to charitable causes



- ✓ TREE FELLING
- ✓ TREE REDUCTIONS
- ✓ HEDGE WORK
- ✓ LANDSCAPE GARDENING
- ✓ GENERAL GARDEN MAINTENANCE

07857 001815

Glennie's Tree Services Ltd

Email: info@glenniestreeservices.co.uk



N.P.T.C and Lantra Approved and Certificated

Fully Insured





PEVEREL WINE CLUB

WHY MISSING GATE GOT ITS NAME!



June saw the first of our summer *Out & About in Essex* meetings away from the village hall, with a trip to Missing Gate Vineyards in a beautiful setting on the lovely slopes opposite RHS Hyde Hall. Our hopes of a balmy summer's evening wandering through the vines were soon dashed when a cloudburst hit just before we were due to start; however, we were compensated by the glorious sight of a double rainbow as we arrived and a stunning sunset as we left – not to mention the excellence of the wines we tasted.

The Crouch Valley area, also known as the salt-marsh stretch of Essex and, promisingly, as the Essex Riviera, has been identified as a future rival to France's Côte d'Or wine region because of the impact of climate change. It already has an excellent microclimate and superb terroir, and Missing Gate is one of the Crouch vineyards tipped for future greatness.

The land covered by the vineyards had been farmed for generations by the Speakman family, fighting an annual battle to grow arable crops in the heavy clay soil. Inspired by the success of other vineyards along the River Crouch, the family decided in 2018 to replant with vines carefully chosen for their resilience to disease, adaptability to a changing climate, and potential to produce outstanding wines.

We were lucky to taste a number of wines from their extensive lists, everyone selecting according to individual tastes, enabling us to compare different vintages of some grapes, and even to sample the prestigious Three Horse Land Pinot Noir, which retails at a stonking £70 a bottle. Jeremy Clarkson has tasted the Two Horse Land version, describing it as *"one of the very finest English Pinot Noirs...a real gem, and almost certainly the best thing to come from Essex since the Ford Cortina 1600E"*. He was so smitten with it that he now serves it in his pub, The Farmer's Dog.

We enjoyed our host Charlie's relaxed presentational style and particularly appreciated his story of how Missing Gate got its name: apparently, some years ago, RHS Hyde Hall commissioned some very impressive wrought-iron entrance gates, which were duly installed. Sadly, the gates went missing the very first night and have never been recovered, and the event has been immortalized for posterity by its neighbouring winery!

July will also see us straying away from the village hall for our annual walking treasure hunt, this year a little closer to home, around Chipping Hill in Witham. Although the route and answers remain a mystery so far, there's no mystery about the final destination: the White Horse pub in Chipping Hill to get together for supper and the answers.

If you'd like to join us in July – or indeed for any other meeting – for a light-hearted and inexpensive evening out, you would always be very welcome. Please give Vee a ring beforehand on 01245 355723 however, to ensure there is enough food and drink for all. (We normally meet on the second Wednesday of each month in the village hall, but with some exceptions, particularly during the summer months). Visit our new website at www.peverelwineclub.co.uk The exciting 2026 programme is available to view on the website, or email Vee at peverelwineclub@hotmail.co.uk for more information.



Vee Green, Secretary

Coming soon to HPVH



Mailing List



WWW.HATPEVHALL.ORG



Scan to Buy Tickets



Quoid



Hatfield Peverel Village Hall
Saturday, Jul 25th
 Doors : 7pm Band : 8pm
 Tickets :- 

www.ticketsource.co.uk/hatfield-peverel-village-hall

TELEGRAM

★ SAM ★

THE ULTIMATE TRIBUTE TO

T.REX

METAL GURU-RIDE A WHITE SWAN-JEEPSTER-GET IT ON
 SOLID GOLD EASY ACTION-I LOVE TO BOOGIE & MORE!



Hatfield Peverel Village Hall
Saturday, Sept 26th
 Doors : 7pm Band : 8pm 

www.ticketsource.co.uk/hatfield-peverel-village-hall

The Pantoons present:
Shakespeare's
Twelfth Night



Sunday, Sept 27th
Hatfield Peverel Village Hall
Doors: 1:30 Show: 2:00

www.ticketsource.co.uk/hatfield-peverel-village-hall

COMMON GROUND THEATRE COMPANY

"Don't even think of staying here. This house... has a history!"

THE PHANTOM OF FRIAR STREET

by Pat Whymark



Hatfield Peverel Village Hall
Sunday, November 1st
 Doors: 4pm, Performance 5pm
www.ticketsource.co.uk/hatfield-peverel-village-hall
 Box Office: 0300 102 0473. Tickets £12-15
www.commongroundtc.co.uk

Tickets from:- <http://tinyurl.com/HPVH-Tickets>