

MAY 2024 | ISSUE NO. 4

HATFIELD PEVEREL

VILLAGE VOICE

FORD RIDELONDON CLASSIQUE RETURNS



CONTENTS

The Ford RideLondon Classique returns to Essex..	3
Your Parish needs you!	6
NDP News	7
Keeping the Village safe	7
Hatfield Peverel Football Club	9
Hatfield Peverel Parish Council News	12
Hello from your local WI!	14
Hatfield Peverel Allotment Association	15
Maldon Film Club – What Next?	16
St Andrew's and All Saints	17
Wildlife Champion Update	19
News from Hatfield Peverel Methodist Church...	20
Helen Rollason Cancer Charity	22
Garden Tips & Tricks	23
Maldon Croquet Club – Mallets Away!	25
Hadfelda (Ladies Group)	26
Peverel Wine Club News	27

USEFUL INFORMATION

Click below for Parish Council and village information and contacts

[Hatfield Peverel Parish Council](#)
[Committees and Advisory Groups](#)
[Local Information and Contacts](#)

Credits:

Editor: Janice Fitzpatrick
communications@hatfieldpeverelpc.com

Publisher: Andrew Smith Print Ltd
andrew@asmithprint.co.uk

Copy deadline for JUNE 2024 issue is 14th MAY 2024. (Any copy received after this date may not appear in the June issue) to communications@hatfieldpeverelpc.com
 Format: word document (docx) including url links – max 500 words; photos to be supplied as separate jpeg files.

Correction to The Freedom of the Parish for Jackie & Ken article

There was an unfortunate slip-up in last month's article regarding details of Ken & Jackie Earney within their Freedom of the Parish Award article. Ken and Jackie actually moved to the village in 1963 and not 1993 as previously stated. Ken says, "it was immediately after our wedding and honeymoon. (And in 1963 and for many years after I was as tall and upright as Ian Twinley is now!)".

COMMUNITY INFORMATION EVENT



Tuesday 21st May 2024 at the Village Hall
 8pm with a welcome from the Parish Council Chairman,
 Councillor Mark Weale

CHAT TO REPRESENTATIVES FROM THE PARISH & DISTRICT COUNCILS

- Find out what's going on in your village including youth services, open spaces, events, Neighbourhood Development Plan & the Parish Council's plan for this year and beyond
- Give us your views
- Ask questions
- Share your concerns

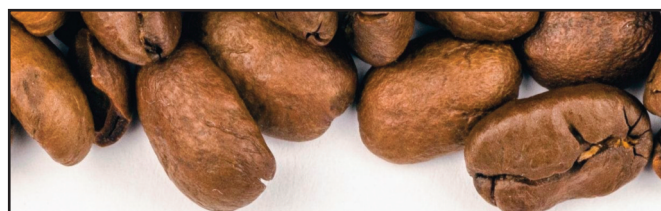
MEET YOUR LOCAL CLUBS & SOCIETIES

- EMC
- Village Hall Events
- Wine Club
- The Western Front Association
- Flower Club
- Hatfield Peverel's Methodist Reality Church

SPEAK WITH LOCAL COMMUNITY GROUPS

- Community Policing
- Urban Wildlife Champions
- Community 360
- Local Schools
- Hearing Help

The Coffee Lounge and bar will be open for you to purchase refreshments



Have you visited the Coffee Lounge?

Open Monday - Saturday, 9am-4pm
 and Sundays 10am-4pm

Serving hot food, breakfasts and lunch
 Eat-in and Take-away

COFFEE CLUB
 Thursdays 9-11am

All welcome for a chat and a cuppa!



THE FORD RIDELONDON CLASSIQUE RETURNS TO ESSEX

The world's very best professional cyclists will return to Essex on Friday 24th and Saturday 25th May in one of the highest profile sporting events hosted by the county in 2024.

The Ford RideLondon Classique is a UCI Women's World Tour event – the highest level of professional cycling – and sees the best female cyclists in the world race over three days for the right to be crowned champion.

Twelve months ago, thousands of cycling enthusiasts lined the streets of Essex to watch more than 100 elite riders come through their streets. In 2024, which marks the tenth edition of the race, the Classique promises to be even more competitive, with the first two days of racing returning to Essex.

On Friday 24th May, thousands will pack the streets of Saffron Walden to watch the start of the race at 11am. Beginning in Market Square, the riders will roll out towards Great Chishill before making their way east towards Thaxted (arriving at roughly 12:30) heading through Finchingfield (12:45), Halstead (13:20) and Mistley (14:25) among others en-route to the finish on East Hill in Colchester (15:00).

It will not be the first time an elite bike race has come through Essex, with 2024 marking 10 years since the Tour de France raced through the streets of Finchingfield and thousands packed the streets to cheer on their sporting heroes. On Saturday 25th May, Stage Two of the race will start and finish in Maldon.

The town has become synonymous with the event in recent years having hosted a stage since 2022,



and the race will get underway in Promenade Park from 11am, heading northeast towards Tolleshunt D'Arcy (11:15) and Tiptree (11:45) before arriving in Witham (12:10). Riders will complete three loops through Witham, Little Baddow, Wickham Bishops and Maldon before a final sprint finish on Maldon High Street (14:40).

The Classique, which is a London 2012 Olympics legacy event, will finish in London on Sunday 26th May, as the elite riders, which will include the best Great Britain has to offer as well as international superstars, head to Essex for one of the only top-level bike races in the UK.

In 2024, the elite teams taking part includes 11 Women's World Tour teams – the highest level in the sport – and includes the best female team in the world. Team SD Worx-Protime have set the professional cycling scene alight in the last 12 months and provide fierce competition to the two-times defending champion Team dsm-firmenich PostNL.

Full details on road closures and when the race will come through your area can be found on the [Ford RideLondon](https://www.fordridelondon.com) website.



SATURDAY 25 MAY

STAGE TWO: MALDON TO MALDON

The Ford RideLondon Classique, one of the world's leading professional women's bike races, returns to Essex on Saturday 25 May.

The second stage of the 2024 race will start and finish in Maldon. The stage will head north to loop around Abberton Reservoir before three finishing circuits that will see riders pass the likes of Witham Little Baddow and Maldon three times. The full map is provided over the page. It will feature the world's best female cyclists and be screened live on the BBC.

Plan ahead

Make sure you plan ahead for Ford RideLondon-Essex by visiting ridelondon.co.uk/community-info or by scanning the QR code below.

Show your support

There are many fantastic locations on the route where you will be able to watch the race pass. Riders start in Promenade Park at **11:00** and are scheduled to finish on Maldon High Street between **14:40** and **15:05**. Find out the full estimated timings for the race by scanning the QR code below.

Find out more by visiting ridelondon.co.uk.



FORD RIDELONDON CLASSIQUE ROUTE ON SATURDAY 25 MAY 2024



Note: Roads will be closed on a temporary basis for a period of approximately 30 minutes within the predicted road closure window.

£1.75 million funding for Essex to help people get active

In the last two years, the London Marathon Foundation (the parent charity of Ford RideLondon–Essex organisers London Marathon Events) has granted Active Essex £1.75 million to fund more than 250 projects across the county to inspire people to be active. You can find out more about the projects and how you can get involved at www.activeessex.org/ridelondon-essex

Customer Services, Ford RideLondon–Essex, 190 Great Dover Street, London SE1 4YB

YOUR PARISH NEEDS YOU!

We currently have vacancies for three councillors on the Hatfield Peverel Parish Council. If you're looking to make a direct impact on your local community and contribute to decision-making processes that affect local services, facilities, and initiatives, then do consider putting yourself forward.

The decision to become a parish councillor is often motivated by a combination of personal values, a desire to serve others, and a commitment to improving the local community. Could you be our next councillor? Read on for more reasons to put yourself up for the role...

A Sense of Purpose:

Many people find fulfilment in serving their community and making a positive difference in the lives of their neighbours. Being a parish councillor provides a platform for you to actively engage with local issues and work towards solutions.

Personal Development:

Serving as a parish councillor can be a valuable learning experience. It offers opportunities for personal growth, development of leadership skills, and gaining insight into local governance and decision-making processes.



Networking and Connections:

Being involved in local government provides opportunities to network with other community leaders, officials, and stakeholders. Building these connections can be beneficial both personally and professionally.

Voice and Representation:

You might be motivated to become a parish councillor to ensure that the voices of your community are heard and represented in local decision-making. You would be advocating for the needs and concerns of residents.



Sense of Civic Duty:

For some, becoming a parish councillor is driven by a sense of civic duty and responsibility. Some feel compelled to give back to their community and play an active role in shaping its future. Does this sound like you?

Opportunity to Address Specific Issues:

Or perhaps you may decide to run for parish council to address specific issues or challenges facing the community, such as environmental conservation, infrastructure development, or social welfare initiatives.

If any of these resonate with you, perhaps it's your sign to put yourself forward to become a local parish councillor. For more information, please call our Parish Clerk, Sarah Gaeta on 01245 382865.

NDP NEWS



On behalf of the Parish Council the Neighbourhood Development Plan (NDP) team are pleased to advise that the examination of the NDP has now been completed.

On the 11th of March, the Examiner presented his independent Report to Braintree District Council (BDC) which you can read [here](#).

The Parish Council are now in contact with BDC to amend Regulation 16 consultation version of the Plan in accordance with the Examiner's Report. Once the Plan has been amended, the next step will be for BDC to arrange a Referendum to be held within the Parish. The Referendum is your opportunity to indicate your support, or otherwise, of the revised plan which incorporates amendments recommended by the Examiner.

KEEPING THE VILLAGE SAFE

Where to find defibrillators in Hatfield Peverel

Did you know we have two emergency defibrillators in the Village?

We hope you never have to use them but for information, one is at the village hall (just outside the Parish Council's office) on Maldon Road, Hatfield Peverel. The second is at the front of the flats, Old Dairy Approach, off Station Road, Hatfield Peverel (old Arla Dairy site).



Defibrillators at Old Dairy Approach



Defibrillators at Village Hall



How do I use it?

If you find yourself in a situation that may require you to use the defibrillator, you will need to call 999. They will give you the code to unlock the defib kit. Then the machine guides you through how to apply the pads and deliver the treatment. But if you want to be better prepared follow [this link to a YouTube video](#) that details what you should do when CPR is needed.

How to find your nearest defibrillator

A useful link to have in your phone is <https://www.defibfinder.uk/> This tells you where your nearest defibrillator is to be found wherever you are in the UK.

Gigaclear

Faster broadband for rural Britain

UP TO
15x
FASTER
THAN
STANDARD FIBRE

FULL FIBRE BROADBAND HAS LANDED

GET **STELLAR SPEEDS** AT SUPERSTAR PRICES

Enjoy all the benefits of an ultrafast broadband.

Our ultrafast broadband lets you stream in Ultra HD, game online, use multiple devices at the same time without interruption and keeps you connected with crystal clear video calls.



Choose your perfect
broadband package at
gigaclear.com
or call **0370 224 8918**

Gigaclear and the Gigaclear logo are UK registered trademarks of Gigaclear Limited.



HATFIELD PEVEREL FOOTBALL CLUB

History of the club



Hatfield Peverel Football Club was established in 1903, and as such has been providing footballing opportunities within the village for over 120 years. Originally, playing on a pitch behind the Duke of Wellington pub, the club moved to the Village Recreation Ground in the early '30s and utilised an ARP hut for its clubhouse after WWII.



The junior section of the club began to expand and grow in the early 1970's driven by the efforts of Jock & Rita Thomson, Roy and Sheila Ppear, Pat & Glynn Beasley and many others.

With the help of the Parish Council, the club moved to its current location at the Keith Bigden Memorial Ground (KBMG), Wickham Bishops Road in 2013/14. As a club, we strive to deliver an environment where all can play football, regardless of gender, ethnicity, sexual orientation, or ability.



Since moving to our new location, we have continued to actively promote junior, youth and senior participation. In the current season 2023/24 we have 16 Youth Teams (including 2 girls and 1 ladies' team) as well as 4 men's senior teams. These teams comprise well over 330 playing members, and we have more than 50 active volunteers to manage and coach the players as well as running the club, clubhouse and maintaining pitches etc. (We are a registered charity, RGN: 1140160).

The club has a separate 'Wildcats' section that introduces girls from the age of 5 to 11 to this wonderful team sport. We also run 'Meerkats' training sessions for either Reception or School Year 1 (ages 4 to 6). We organise Soccer Camps during the school half term, and we are also looking to expand 'Soccability' sessions to players with disabilities, impairments, or additional needs. Please visit www.hatfieldpeverelfc.co.uk for more information and to book any of these sessions.

We have regular meetings with the Parish Council and our friends at the Hatfield Peverel Bowls Club and Maldon Croquet Club with whom we share the ground. As a group, we are currently developing a 10-year 'Vision Plan' for the KBMG.

We are now coming towards the end of the 2023/24 playing season but we have our major 'in-house' fundraising event, which we will be hosting before we look to the clubhouse and pitch maintenance over the summer. This event is our 'Thomson Day Football Tournament 2024'.

Thomson Day – Saturday, 22nd June 2024

Thomson Day is our annual 'in-house' junior football tournament named after the founder of the youth section Jock Thomson, his wife Rita and son Andy. The tournament started in 1972, and we are now celebrating our 51st Thomson Day and youth football at HPFC.



The day includes:

- Thomson Day Football Tournament (running from 9:30 am to 4 pm)
- Bouncy Castle / BBQ / Stalls / Refreshments and Ice Cream Van / Licensed Bar

This event is open to the whole village, so please come along to a fun and enjoyable day out and help support your local football club.

Hatfield Peverel Football Club Contacts:

Youth Enquiries: Terry Lingley – Secretary: 07736 042466 terrylingley@hatfieldpeverelfc.co.uk

Senior Enquiries: Jim Isaacs – Secretary: 07736 437831 jim.isaacs@sky.com

Website: - www.hatfieldpeverelfc.co.uk

HPFC Wildcats: Donna Fletcher – 07943874219

HPFC Meerkats: Luca Curtis – 07745728430

Facebook: [hatfidpeverelfc](https://www.facebook.com/hatfidpeverelfc)

Instagram: [HATFIELDPEVERELFC](https://www.instagram.com/HATFIELDPEVERELFC)

Instagram: [hpfc_ladies](https://www.instagram.com/hpfc_ladies)

X(Twitter): [HPFC_1903](https://twitter.com/HPFC_1903)



HATFIELD PEVEREL FOOTBALL CLUB

THOMSON DAY

SATURDAY 22ND JUNE

9.30AM – 4.00PM

**OPEN EVENT - PLEASE COME ALONG AND SUPPORT
YOUR LOCAL FOOTBALL CLUB ON WHAT IS SURE TO
BE A FUN AND ENJOYABLE DAY OUT**

**FOOTBALL
TOURNAMENTS**

**STALLS &
GAMES**

**BOUNCY
CASTLES**

DJ

**ICE CREAM
VAN**

**FREE CAR
PARKING**

BBQ

**RAFFLE
TICKETS**

**KEITH BIGDEN MEMORIAL GROUND, WICKHAM BISHOP ROAD, HATFIELD
PEVEREL, CM3 2JL**

HATFIELD PEVEREL PARISH COUNCIL NEWS



May 2024

Section 106 Fund Allocation

By the time this edition of the Village Voice is published, works to create new fencing around the allotments and improvements to the surfacing of Footpath 18 will have begun or been completed. The closing date for bids to complete the Nounsley Play Area improvements has passed and quotes are being considered by the S106 working party before being presented to the Parish Council at its meeting on 13th May for a decision. Work is anticipated to begin in late summer. The planning application for a double tennis court on the Strutt Memorial Recreation Ground has been approved. We will be going out for quotes for this work soon but will keep residents updated on the project's progress.

Community Park Vision Plan

A dedicated committee is hard at work crafting a vision plan for a future community park. We envision a park that supports diverse recreational opportunities, offers a space for mental and physical wellbeing that values and protects local rural heritage and enhances biodiversity, allowing native plants, trees and wildlife to thrive. We usually hold committee meetings on the fourth Monday of the month at the Village Hall. The public is welcome to attend – keep an eye out for the agenda which will be published the week before.

Party in the Park

The Parish Council's Events Committee is busy working hard behind the scenes to bring you *Party in the Park* in July. Please get in touch if you can help, either on the day or by joining the Committee.

Village Noticeboards

If you have any community notices that you would like displayed on the Parish Council's noticeboards, please deliver them to the Parish Council office at the Village Hall where staff will arrange this. Notices that will be displayed must be of benefit or interest to the community. Commercial advertising will not be permitted, and all notices will be displayed at the discretion of the Clerk or Assistant Clerk.

Crime Concerns

Please remember you can call 101 for crime prevention advice or to report a crime that does not



need an emergency response. It is very important to report crime to the Police so that they can build up a 'picture' of what is happening in the area. Alternatively, you can report online: [Report a crime | Essex Police](#)

The Parish Council is working in partnership with Essex Police to recruit two Special Constables. If you are interested in applying to be a voluntary Police Officer for the village, please see our website for further information and the answers to frequently asked questions: <https://www.hatfieldpeverelpc.com/special-constable-recruitment/>

Planning

Planning decisions are made by Braintree District Council, following consultation with residents, the Parish Council, and other agencies where necessary. For information on what planning applications have been received, granted and refused by Braintree District Council, please see: https://www.braintree.gov.uk/info/200225/search_and_track_planning_applications/592/weekly_lists

Social Media

Please follow the Parish Council on social media for news and updates either on [Facebook](#) or on [X\(Twitter\)](#) The Parish Council's Social Media policy can be viewed [here](#) and all Parish Council news is available on the [HPPC Website](#).

Get involved!

The next meeting of the Parish Council will take place on Monday 13th May 2024 in the Vic Olley Room at the Village Hall. This meeting will include the Annual Parish Council meeting, plus the ordinary May meeting. Public participation is welcome, please see the agenda which is published on the Parish Council website and the noticeboard outside the Parish Council office.

Sarah Gaeta, Parish Clerk; Carly Truman, Assistant Clerk

Parish Council Office, Village Hall, Maldon Road, Hatfield Peverel, CM3 2HP Tel 01245 382865.

Email: parishclerk@hatfieldpeverelpc.com or assistantclerk@hatfieldpeverelpc.com



Wickham Bishops Jazz Club
AT
Wickham Bishops
Village Hall CM8 3JZ

COMING SOON

May 18	Pete Lay's Gambit Jazzmen
June 15	Allen Beechey's New Orleans Jazz Bandits
July/Aug	Summer Break
Sept 21	Dave Browning's Jazz Cats
Oct 19	Tad Newton and Friends
Nov 16	Pete Allen's Jazz Band

Email – wickhambishopsjazzclub@gmail.com
Or Ring Pete on 0754 877 5777

Proceeds to : Charitable Causes



FLOWER FESTIVAL

ST MICHAEL'S CHURCH
WOODHAM WALTER

"THE JOY OF FLOWERS"

FRIDAY JULY 12TH – MONDAY 15TH JULY 2024
10AM – 5PM

Refreshment tent • Free Admission • Live music

SUNDAY SERVICE 10-11

HELLO FROM YOUR LOCAL WI!

In March, fifty-three lovely ladies joined us for some crafting. We made some beautiful willow wreaths and hearts and decorated them in time for Easter.



This month we welcome guest speaker Dr Vivien Newman, who will speak to us after a very quick AGM. Dr Newman is the author of several books on the roles women played during the First World War. We have chosen 'Standing up to the War Office: Women who refused to 'Go home and sit still'', which sounds rather interesting and ties in nicely with the D-Day celebrations on 6th June. All welcome, free to Terling WI members, guest fee applies.

This month also sees us host our very first Terling & Fairstead Open Gardens, on Sunday 19th May. We have 11 participating gardens, including Terling Place. Keep an eye out on our social media channels for more information. Tickets can be purchased in advance by using the QR code on the poster, or any Farleigh Hospice shop. Tickets are £5 per person, under 16s free (Don't forget to bring the confirmation email/tickets to collect your wristband and brochure!)

Want to join us?

We are now open for new members and membership renewals, so if you're thinking about joining, why not give us a try? Membership is just £48 for the year and includes a total of 11 meetings (that's £4.36 per meeting!). Forms can be emailed or collected from any of the committee. Membership runs from April 2024 to March 2025.

Terling WI meet every fourth Thursday of the month in Terling Village Hall at 7.30pm. For more information, contact us on terlingwi@outlook.com, or call Lucy on 07926 649669. Check us out on Facebook <https://www.facebook.com/terlingwi>

KEY DATES TERLING W.I.

19 MAY	TERLING OPEN GARDENS
23 MAY	MONTHLY MEETING - AGM - & SPEAKER DR VIVIEN NEWMAN
27 JUNE	JUNE - MONTHLY MEETING

www.facebook.com/terlingwi
[.cagooma](https://www.cagooma.com)




OPEN GARDENS Terling




Sunday 19 May 2024 11am-4pm

£5 per person (Under 16s free).

Advance tickets are available from the Farleigh Hospice website or any of the Farleigh Hospice shops. On the day programmes are available from Church Green, Terling Place, CM3 2PQ or any open garden.



For more information visit:
farleighhospice.org/gardens





It is because you care that we can
www.farleighhospice.org
Registered Charity No. 284670

It is because you care that we can

www.farleighhospice.org   





The Benefits of Growing Your Own!

Have you ever heard people say that home grown fruit and veg taste better? Well, they are not wrong. When you have an allotment, you know what you are adding to your veg. You are not adding chemicals to enhance the colour or to keep it looking better on a shop shelf. You grow what you want. You cut it when you need it. The cost of buying fruit and veg has increased, so growing your own saves money.

Physical Health

Instead of high fees, crowds, and the competitive nature of showing up to keep fit at a gym, come along without all that to your allotment for fresh air and exercise. However, if you think an allotment is all about digging you will be pleased to discover many folks are very successful 'no-dig' converts.

How much does a Plot Cost?

A standard plot will only set you back about £4.60 per month to rent plus a £6 per year membership fee. Add in £20 for seeds, + £7 for seed potatoes and you good to go. about £88 **per year**, or £1.70 a week. Growing runner beans could give you a yield of 10kg per square metre, this would cost £48 to buy in a shop. Similarly, beetroot could yield 4kg which would cost £12 in the shops. As well as saving on food, fitness and mental health costs, you enjoy fresh air and fellowship.

Come and Join Us!

How much time does it take? I would say during the lighter evenings you could do a two to three evenings a week and a half day at the weekends. Some people are on their plot every day. Spring cleanup/planting and fall harvest/tidy up may require a bit more time

Hatfield Peverel is fortunate to have allotments and currently we have a waiting list of under 10 people. Some towns in Essex have waiting lists several years long. So if you want to join in with this community activity just contact us on <https://membermojo.co.uk/hpaa>

Tips for April – Do these now!

1. Mist houseplants – they're trying to flower and need extra moisture.
2. Limit mowing the lawn – resist the temptation to scalp your grass down.
3. Give bulbs a tidy up – Cut them back and make them ready to replant in autumn.
4. Deadhead rhododendrons and azaleas – too often overlooked causing unsightly mess.
5. Planting sweet peas – grow best in rich soil with plenty of moisture and cool conditions.
6. Potting lilies – mix in leaf mold + grit into gen purpose compost + perlite or vermiculite.
7. Feed Birds – they will be nesting and laying eggs and need a nutritional boost.

Use the rule of 'right plant, right place' and you'll keep your plants happy.

APRIL 2024

FOCUS ON

Mental Wellbeing

An allotment is perfect if you want or need a bit of 'me time'. You can easily forget the problems of the world whilst you are enjoying your plot. Meeting fellow allotment holders, having a chat about common interests. This can be very important if you enjoy like-minded people.



MALDON FILM CLUB

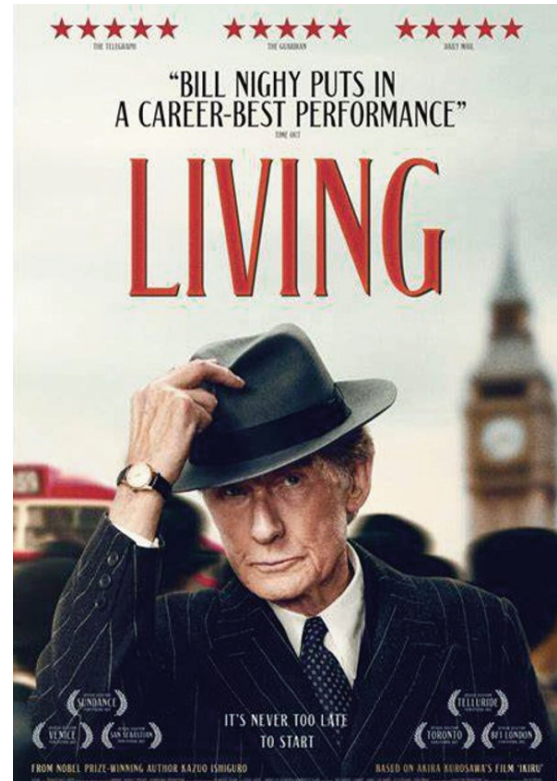
– What Next?

Maldon Film Club's current season continued in April with the screening of **Decision to Leave** and **Women Talking**

Another very successful season comes to an end soon following the screening of **Official Competition**, on 8th May and **Living** on 22nd May.

Official Competition

A billionaire businessman in search of fame and social prestige decides to make a unique, groundbreaking film. To achieve this goal, he hires the best of the best: He hires a stellar team consisting of famous filmmaker Lola Cuevas (Penelope Cruz) and two well-known actors who boast not only an enormous talent but also an even bigger ego, Hollywood star Félix Rivero (Antonio Banderas) and ageing theatre thespian Iván Torres (Oscar Martinez). They're both legends, but not exactly the best of friends. Through a series of increasingly hilarious tests set by Lola, Félix and Iván must confront not only each other, but also their own legacies.



Living

In this story set in London in the 1950s, civil servant Rodney Williams (Bill Nighy) is overwhelmed at work and lonely at home. Suddenly his life takes a heartbreaking turn when a medical diagnosis tells him his time is short. Influenced by a local decadent, Mr Sutherland (Tom Burke) and a vibrant woman, Miss Harris (Aimee Lou Wood), he continues to search for meaning until a simple revelation gives him a purpose to create a legacy for the next generation

Our new season begins on Tuesday 10th September 2024 and information about the 19 films to be screened will be available very soon. So watch this space for further details as Maldon Film Club starts to prepare for its 20th season!! For further details and a membership form for the 2024-25 season please check out the website www.maldonfilmclub.uk, visit the Maldon Visitor Information Centre (1100 – 1600 Tuesday to Saturday) or contact me, John Salisbury, on 07905 971608.

ST ANDREW'S & ALL SAINTS, ULTING



News from the churches



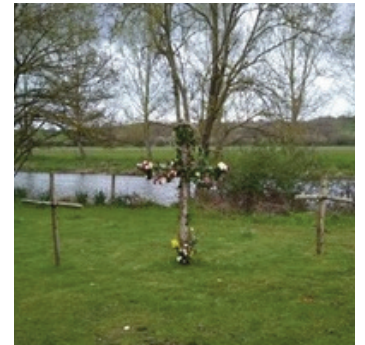
Easter was celebrated with splendid services with both churches decorated with beautiful floral displays.

Inside St Andrew's the crucifixion cross which had been seen both by the Junior and Infant school children was transformed into a shimmering lightness.

Outside we were pleased that so many enjoyed following the Easter trail in the churchyard, telling the story of that first Easter. The Infant school were among the first visitors, and we were sorry to hear that some were disappointed not to find Easter eggs at the end (an understandable expectation?)

At All Saints the three crosses in the churchyard were an impressive visual aid to the whole Easter story, and in both churchyards, there were Easter gardens revealing the stone moved away from the tomb where Jesus had been laid.

The next major Christian festival is Pentecost coming from the Greek meaning the 50th day after Easter day - the resurrection of Jesus. The festival recalls the coming of the Holy Spirit to the followers of Jesus in Jerusalem, and this year falls on Sunday 19th May. In England, the festival was traditionally called Whitsunday and was followed by a bank holiday on the Monday, but in 1971 the then government decided that the bank holiday would instead be fixed on the last Monday in May.



The term Whit Sunday derives from the custom of the newly baptised wearing white clothing and from the white vestments worn by the clergy in English liturgical services; and in etymology the name is a contraction of "White Sunday", attested in "the Holy Ghost, whom thou didst send on Whit-sunday" in the Old English homilies, and parallel to the mention of *hwitmonedei* in the early 13th-century *Ancrene Riwle*. (Now you know!)

This year our two churches instead of celebrating Pentecost together have decided to have a combined parish event the following Sunday, Trinity Sunday 26th May down by the river at All Saints. There will be a service at 11am followed by a light lunch when we should be able to enjoy the full splendour of spring by the Chelmer. All are welcome.

Meantime we continue with our Soup and Roll lunches in aid of Charities on the second Tuesday in the Month (we hope not many were caught out by the change in April to the third Tuesday but that was a one-off following Easter). The next event is on Tuesday 14th May from 12.30pm and will be supporting Christian Aid . Please put that in your diaries. We look forward to seeing you then.

And Edward Bear recommenced after the Easter school holidays in St Andrew's church hall for preschool children at 10 am each Thursday in term time (contact Nicky Shelley (01245380814).

Church contacts:

Rev. Stephen Northfield 01245 380958 SRNorthfield@aol.com

Rev. Derek Clark 01245 380627 / 07860235778

Charles Cope (Lay Reader) 01245 382134

Churchwardens:

John Strange 01245 381004 johnstrange32@btinternet.com

John Tomlins 01245380359 johnandanna.tomlins@btopenworld.com

Parish of St Andrew Hatfield Peverel with All Saints Ulting		
SERVICES etc. for MAY 2024		
	St Andrews (+refreshments after 10.15 services)	All Saints
Saturday 4th	10 -12 noon COFFEE MORNING in St Andrew’s Church Hall	
Sunday 5th	10.15am Mattins (Morning Prayer with hymns)	9am Holy Communion (BCP)
Sunday 12th	8am Holy Communion 10.15 All Age Service 11.30 APCM	9am Morning Prayer with hymns
Tuesday 14 th	SOUP and ROLLS in St Andrew’s Church Hall 12.30- 2pm (In aid of Christian Aid)	
Sunday 19 th PENTECOST	10.15 Parish Eucharist	9am Holy Communion (BCP)
Sunday 26 th TRINITY	11a.m. Combined Service at All Saints, Ulting followed by light lunch by the river	
<p>Edward Bear: Every Thursday 10am to 11.30 (in term time)– Coffee and Company – in hall - with short worship on alternating weeks</p> <p>Churches open for prayer every Wednesday: All Saints at 9am [with Morning Office], St Andrew’s at 12 noon</p> <p>Rev’d Stephen Northfield 01245 380958</p> <p>Rev’d Derek Clark 01245380627 07860235778</p> <p>John Strange 01245381004 John Tomlins 01245380359</p>		



Wildlife Champion Update

Many thanks to our Essex County Councillor Derrick Louis for helping us to buy six beautiful new trees for the Strutt Memorial Recreation Ground, to our Tree Warden Lesley Moxhay for organising, and to everyone who came along to help plant the trees on Saturday 13th April: Derrick, Rafe, Diane, David, Lesley, Dave, Lucy, Jackie and Paul!

The new trees have watering systems to help them through the summer and substantial tree guards which we hope will protect them from damage. When digging the holes we were sad to find litter buried deep in the ground – a golf ball, a vintage Coke can and more worryingly, an intact plastic bottle from 2003! Let's dispose of litter carefully. Our future environment depends on us.

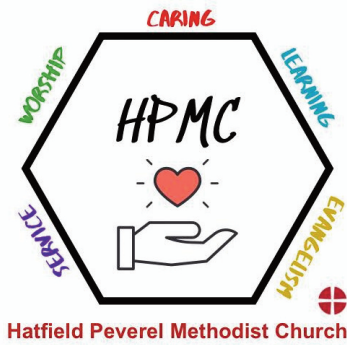
Why not join us for future sessions? To quote Councillor Louis, "I really enjoyed it and would encourage others that want to make a positive difference to our wonderful village to get involved too". You are welcome to join us working on wildlife-friendly projects around the village. We meet regularly from 9-11am on the second Saturday and the fourth Friday of each month. Next sessions are Saturday 11th and Friday 24th May 9-11am. Please get in touch if you would like to join us!

Donna Goddard, Urban Wildlife Champion,
Hatfield Peverel 01245 382550
wildlife-champion@hatfieldpeverelpc.com



PARTY IN THE PARK

is back this July 6th. An all day event that takes place at the Strutt Memorial Recreation Ground just behind the Village Hall. Fabulous food and drink stalls, special events, games and inflatables as well as live music are all on offer. Put the date in your diary. And if you'd like to be a part of the day, get in touch with our team on assistantclerk@hatfieldpeverelpc.com



EASTER FUN & HANDICRAFT SUCCESS!

News from Hatfield Peverel Methodist Church

We thoroughly enjoyed welcoming children and their families to our Easter Craft afternoon on Palm Sunday. We shared aspects of the Easter story as we made paper palm leaves, coloured pictures of the story, etched colourful crosses, made Jammie Dodger tombs and Easter gardens.



Clay was provided to make cups – prompting a question about what cups had to do with the story and providing an opportunity for sharing. There was a lovely feeling of friendship and belonging and we hope to offer another opportunity to gather and create in September. Watch this space!

Rev. Barry and Ria are looking forward to finally recommencing lunch club at St Andrews Junior School after such a long break. They have so many ideas for activities and sharing.

We are looking forward to attending the Community Information Event on Tuesday 21st May at 8pm at the Village Hall. We hope to see you there.

Stitch to Enrich

Did you visit the Horticultural Society Village Show on Saturday 6th April? Perhaps you saw some of our entries in the Handicraft section? We were delighted to have 18 entries in 6 classes and to come away with 5 firsts, 4 seconds, 3 thirds, 2 'Highly Commended' and a cup!



Our members also did rather well in the flower and cookery classes – and another cup awarded! We are now exploring what we can make to enter in the Autumn Show in October. Why not come and say hello in the Coffee Lounge on the first and third Thursdays in the month? You can't miss us!

GARDEN TIPS & TRICKS



How banana peel can be an asset in your gardening

Banana peels, often relegated to the compost bin or trash, are a treasure trove of nutrients for your garden. They're packed with potassium, phosphorus, calcium, and magnesium and offer a variety of benefits for your plants. So, before you discard those peels, consider these five effective ways to put them to good use:

Compost Booster:

Banana peels are a fantastic addition to your compost pile. They add valuable nutrients and help accelerate the decomposition process. Chop them up or bury them within the pile to prevent attracting pests.

Liquid Fertiliser:

Create a nutrient-rich "banana tea" by soaking peels in water for a few days. Use this liquid fertiliser to water your plants, providing them with a boost of potassium and phosphorus, essential for flowering and fruiting.

Seedling Starter

Cut banana peels into small pieces and bury them in the soil when planting seeds. As the peels decompose, they release nutrients that nourish the young seedlings and promote healthy growth.

Rose Food:

Roses are particularly fond of potassium, and banana peels are a great source. Bury chopped peels around your rose bushes to encourage healthy blooms and vibrant colours.

Attract Butterflies and Birds:

Place overripe banana peels in your garden to attract butterflies and birds. The sweet scent and remaining fruit attract these beneficial creatures, adding life and beauty to your outdoor space.

Top tips:



- Wash your bananas before peeling them to remove any pesticide residue.
- Use organic bananas whenever possible.
- Chop or blend peels before adding them to compost or soil for faster decomposition.

By incorporating banana peels into your gardening routine, you're reducing waste and providing your plants with a natural and effective source of nutrients. So, next time you enjoy a banana, remember that the peel is just as valuable as the fruit itself.

**CALLING ALL
VILLAGE VOICE
SUBSCRIBERS!**

MAKE SURE YOU DON'T MISS YOUR COPY
OF THE VILLAGE VOICE IN YOUR INBOX!

CHECK YOUR JUNK MAIL!
ADD US TO YOUR CONTACTS LIST!

Want to be added to our subscribers list?
[Click here!](#)

**Clubs & Activities
at the Village Hall**

Badminton Mondays 7pm 	HotSteps Mondays 3:30pm Wednesdays 5:30pm 	EMC Lunch club Wednesdays 1-3pm 	Table Tennis Tuesdays 7:30pm
Tuesday Toddler Time Tuesdays 9:30am 	NeeNaw Monthly, Wednesdays 	Train Master Monthly - Thursdays 	Little City 3rd Wednesday of the month 9:30am
Kazen Kai Karate Thursdays 3:45 	Everybody Move Bootcamp Wednesdays, 6:30-7:30 	Methodist Church Sundays 9:15am 	Dancematic Latin Dance Fridays 2pm
Shining Stars Childcare Weekdays 7am-6pm 	Dog Star Dog Training Thursdays 6pm 	Caledonian Soc Wednesdays, 7:30 	Stitch to Enrich 1st and 3rd Thursday 2-4pm
Flower Club 1st Weds of the month 7:30pm 	Bingo 1st & 3rd Friday of the month: 7 - 10pm 	Essex Tai Chi Academy Saturdays 9:30-12:30 	Wine Club 2nd Weds of the month 7:30pm

For club information, go to the Clubs page on our Website.
www.HatPevVhall.org
Tel: 0300 104 0473
Email: Enquiries@HatPevVhall.org

HELEN ROLLASON

Helen Rollason
Cancer Charity

Cancer Charity News & Events

The first of Helen Rollason's big summer fundraising events took place on Sunday 14th April. Over 250 people took part in the Rural Ramble starting at Hatfield Place and enjoying a walk or run through some lovely local countryside and along the rivers Ter and Chelmer. The sun shone, the mud dried up and everyone enjoyed the fresh air and exercise followed by a cream tea in the walled garden of Hatfield Place. A special thanks to The Bakehouse, Dorrington's and Mrs Salisbury's for generously donating the delicious scones. If you missed it, keep checking here for details of our next Rural Ramble.



Lots of other events have also taken place recently, all raising valuable funds to support those living with cancer. A big thank you to those who took part in the London Landmarks Half Marathon, the London Marathon, the Colchester Stampede, and the Marathons in Chelmsford, Bath and Barcelona. Also, those who recently organised and participated in a Jazzercise and the Sawbo sessions. If you like a challenge, check our

website for details of future events such as the Edinburgh Half Marathon and the Royal Parks Half Marathon.

We have some lovely events for you this summer. If you enjoy cycling, our popular '**Ride for Helen**' is taking place from The Crix in Hatfield Peverel on Sunday 12th May. There are routes for families, casual cyclists and keen cyclists - you can do 6, 15, 30, 50, 65 or 100 miles, all marshalled and sign-posted. At The Crix, there will be support, refreshments and entertainment.



Hatfield Peverel Opens Gardens will be on Sunday 26th May. If you would like to open your garden, please get in touch with us on 01245 380719. The start point will be our centre on The Street, Hatfield Peverel, where you will get your map and we will be offering teas, cakes and taster treatments in our centre. There will also be a plant sale.

Details of all our events can be found here. Our centres

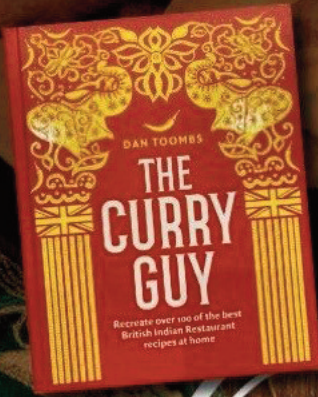
have been busy over the past month with coffee mornings, donations days and a 'Sow and Grow' workshop. Dates for the next coffee morning and donation day are below.

Helen Rollason Cancer Charity

UPCOMING EVENTS

- | | |
|-----------|--|
| 11th May | DONATION DAY 9am-12pm
Drop off your pre-loved items at our centre in Hatfield Peverel. |
| 12th May | RIDE FOR HELEN CYCLE EVENT
The Crix |
| 15th June | COFFEE MORNING 10am-12pm
at our centre in Hatfield Peverel |
| 14th July | A VINTAGE DAY OUT
at Cressing Temple Barns |
| 25th Aug | MARVELLOUS VINTAGE
at Layer Marney Towers |

Purveyors of Fine Indian Cuisine



Dan Toombs
THE CURRY GUY
"This recipe was inspired by a visit to Omar's, a small curry house in Hatfield Peverel. It may be small but the curries I enjoyed there are right up there with the best!"

Omar's

OF HATFIELD PEVEREL

15% DISCOUNT

On collection orders minimum spend £20

Banquet Night

Every Monday & Tuesday

(Except bank Holidays)

**Bring Your Own
Alcohol**

(No corkage charge)

**CELEBRATING OUR
25th ANNIVERSARY**



01245 380 099 / 01245 381 125

www.omartandoori.co.uk

Email: omars_hatfieldpeverel@hotmail.com

The Street, Hatfield Peverel, Chelmsford, Essex CM3 2EA



MALLETS AWAY!

Maldon Croquet Club's season opens

This week saw the opening of Maldon Croquet Club's lawns at the Keith Bigden Memorial Ground in Hatfield Peverel.

25 members "rolled up" for the first day of our season and Maggie played the first ball. This is our second season at our new ground which we share with Hatfield Peverel Bowls Club. We play Golf Croquet, which is easy to learn, and new members will be assured a warm welcome. We play at all levels – for competitions and for pleasure!



Contact us at maldoncroquetclub@gmail.com to arrange a visit or call in to see us during our "roll up" sessions on Tuesday, Wednesday, Thursday and Friday mornings from 9.30 until noon or Saturday afternoon from 1.30 until 4 pm.

Come and enjoy activities, puzzles,
games and storytime with your child

EVERY THURSDAY 10 AM - 11.30AM

EDWARD BEAR CLUB

*St Andrew's Church
& Church Hall*

£2 per family

More information



Hatfield Peverel Flower Club

Programme for 2024

- | | |
|---------------------------|---|
| 1st May - | Helen Hare - "East of West" |
| 5th June - | Robin White - "Looking Back" |
| 3rd July - | Deb Hart - "Willow in the Landscape"
A talk and demonstration. |
| N.B. No meeting in August | |
| 4th September - | Fiona Harrison - "The Golden Age of Ocean Travel" |
| 2nd October - | David Wright - "Wheels in Motion" |
| 6th November - | Pat South - "Christmas Sparkle" |
| 4th December - | Samantha May - "Festive Fun" |



Hatfield Peverel Village Hall, Maldon Road, CM3 2HP

7.30 for 8pm

Refreshments and Raffle

Guests welcome Non-members £7

www.hatfieldpeverelflowerclub.co.uk



HADFELDA (LADIES GROUP)

Summer Events

Well, it looks as if summer might finally be on its way and the lighter evenings and warmer days have certainly raised our spirits and encouraged people to venture out and about. We were delighted to welcome some new faces to our group and last month several guests came along to give us a try. This was very nice as guests are always welcome.

I'm often asked why our group is called 'Hadfelda'. The name comes from the Saxons who settled in the area in the 7th and 8th century, and it means 'a clearing in the wild uncultivated ground'. The village has definitely changed a bit since those days!

We are in the process of completing the second half of our programme for the rest of the year. In July we are planning to have a cream tea and in September a Harvest lunch (you may notice a bit of a theme here). We always try to do something special and bit quirky for our Christmas meetings and last year we were entertained by an excellent Ukulele band. This year is still a work in progress, so watch this space!

Our next meeting is Wednesday 22nd May at 2pm in St. Andrew's Church Hall when the speaker will be Tammy Best, a Police Officer. Tammy will be talking to us about Fraud Prevention, something we all need to be aware of in this digital age.

'Decades of Dolls' is the title of our talk on 26th June. The description 'Dolls' doesn't do justice to the beautiful creations that Dot Reed will be bringing to show us.

If the idea of an interesting talk followed by tea and biscuits in a fun and friendly setting appeals to you, give us a try! If you have any questions, please call Marel on 01245 380827



SOUTHERN BRANCH
ESSEX DISTRICT ASSOCIATION

Sunday 19th May,
2.00pm Main Hall,
Hatfield Peverel Village Hall, CM3 2HP

**Vanessa Jones speaks on
"A closer looks at Asian hornets"**

Vanessa is a keen organic grower of vegetables and fruit and a Master Beekeeper. She is interested in all aspects of horticulture and the environment and is inspired by nature and landscape. The talk will cover the ever present threat and incursion of the Asian hornet (*Vespa velutina* aka the Yellow-legged Hornet) a non-native species that threatens our pollinators.

Light refreshments.
Entry: Members free,
Non-members: £2.00
more info: <https://www.nvsuk.org.uk/>



FROM SAINT VALENTINE TO SUPER SAUVIGNONS VIA SOUTH AMERICA!



Peverel Wine Club News

We have been enjoying a great spring season at the Wine Club, with some excellent wines and varied and enjoyable meetings. A well-attended February meeting saw us celebrating the Feast of Saint Valentine in splendid style. We tasted six romantic wines from Italy, accompanied by various heart-shaped or allegedly aphrodisiac treats. The winning white wine was an interesting **Loved & Found Zibibbo** from Waitrose at £8.99. The winning red, a blockbuster **Pasqua Passione Sentimento Passimento Rosso** from Majestic at £10.99.

We also enjoyed some appropriately-themed games: a picture quiz of people with romantic names, Kim's game with romantic objects, Matchphrase where everyone searched for a partner with only a suitable quote to assist them, and, of course, an uproarious session of Perfect Partners, where five volunteer couples showed us how much (or little!) they knew about each other by responding to challenging questions from MC Steve Spearman. As is traditional, Bob and Barbara Hill won this (so they ought, with well over 60 years of wedded bliss to their credit) but they were closely pressed to a tie-break by Rod and Ali Pudney. Everyone had a chaotic but enjoyable evening and entered fully into the spirit of the occasion.

In March, if anyone noticed a strange collection of people sporting ponchos, Viva Zapata moustaches, gaucho pants, Carmen Miranda headdresses or sombreros heading towards the village hall, the reason for this was simple: it was just Wine Club members on their way to our fabulous South American Fiesta! We enjoyed an excellent tasting of six wines from a variety of South American countries presented by the lovely Neils Dubro, owner of local wine merchants **Street Wines** (www.streetwines.co.uk), and the Club provided one of its legendary three-course suppers on a South American theme to accompany the wines.

Clear favourite of the white wines tasted was the **Ventisquero Sauvignon Blanc** from Chile, superb value at £7.85, while opinions were divided on

the best red wine, with an unusual **Argentinian Carignan** from Bouchon Foye (£8.00) tying for top spot with the ever-popular Malbec, a lovely **Casarena 505** also at £8. All in all, this was a superb evening and a great opportunity to try some more unusual grape varieties.

Our April tasting provided a complete contrast in that we tasted examples of two of the world's most-commonly planted grapes: Sauvignon Blancs and Cabernet Sauvignons from all over the world, in the hope we'd be able to spot similarities and differences in wine styles from Old and New World offerings. We learnt of the common ancestor of the two grapes, and that Sauvignon can be not only Blanc but also Gris and Vert!

With the reds, the hot topic for debate was whether Cab Sav is better on its own or in a blend. Voted favourite white wine and Wine of the Evening was a stunning **Waimea Sauvignon Gris** from New Zealand at £10.99; Winning red was a beautiful **South African Vergelegen Cab Sav/Merlot** blend at £11.99, both from Majestic and thoroughly recommended!

We're now looking forward to a complete contrast in May – a tasting entitled *Off the Beaten Track*, trying out some more unusual grape varieties and exploring the reasons why they may be less well-known. If you'd like to join us for May's meeting - or indeed any other meeting - for a light-hearted and inexpensive evening out, you would always be very welcome. Please give Vee a ring beforehand on 01245 355723 however, to ensure there is enough food and drink for all. (We normally meet on the second Wednesday of each month but with some exceptions). Our website www.peverelwineclub.co.uk is currently being reviewed, but I can happily send a copy of the exciting 2024 programme if you email me at peverelwineclub@hotmail.co.uk. Also, look out for our stand at the **Community Information Event** in the Village Hall on Tuesday 21 May at 8pm – we shall be there to answer your questions and, who knows, you might win a bottle of wine in our raffle!

Peverel Wine Club: Vee Green, Secretary (01245 355723)

Coming soon to HPVH



WWW.HATPEVHALL.ORG



HATFIELD PEVEREL HPVH VILLAGE HALL

AN EVENING OF LIVE MUSIC IN TRIBUTE TO:

THE BEATLES

Come and listen to the fab sounds of The Beatles performed by:

Glass Onion

Live band stage performance, appearing at:
Hatfield Peverel Village Hall
Maldon Road, CM3 2HP

Saturday 27th April 2024

Tickets: **£15** Doors open 7pm, hall 7.30pm, band 8pm
www.ticketsource.co.uk/hatfield-peverel-village-hall

YELLOWSTONE EVENTS PRESENTS

Bob Drury's

Viva NEIL DIAMOND UNPLUGGED

"An uncanny resemblance to Neil Diamond's voice"
Debbie McGee, BBC Radio

"If I didn't know better I'd have said that was Neil Diamond singing"
Pat Marsh, BBC Radio

"...Dazzling class"
"One of the World's finest tributes to Neil Diamond"
"Without doubt the best Neil Diamond tribute in the UK"
"The vocal accuracy is astonishing"

"Totally blown away by your level of musicianship on guitar"
Mark Lelang, Keyboard player with Neil Diamond's band

SATURDAY 18 MAY

Hatfield Peverel Village Hall
Maldon Road, CM3 2HP
Doors 7pm Starts 8pm
Tickets £13 - £16 Book online at
ticketsource.co.uk/hatfield-peverel-village-hall

HATFIELD PEVEREL HPVH VILLAGE HALL

The Pantofoons
present

The Importance of Being Earnest

Sunday, June 9th
Hatfield Peverel Village Hall
Doors: 2:30 Show: 3:00
Tickets: £12-£15
www.ticketsource.co.uk/hatfield-peverel-village-hall

BRENTWOOD MAC

Hatfield Peverel Village Hall
Saturday, July 27th
Doors : 7pm Band : 8pm
Tickets :-
www.ticketsource.co.uk/hatfield-peverel-village-hall

Tickets from:- <http://tinyurl.com/HPVH-Tickets>